

4/4

PIZZ

I'm just going a bit without closing

just early

LENTO

Tongue ram

btr

pp

SOUND → AIR → KEY CLICKS

key clicks that sing

modify color

on closed embouch.

? section w/ harmonics

sing

T.R.

→ STRUCTURE

it's a duo

- Percussive elements (PIZZ/T.R.)

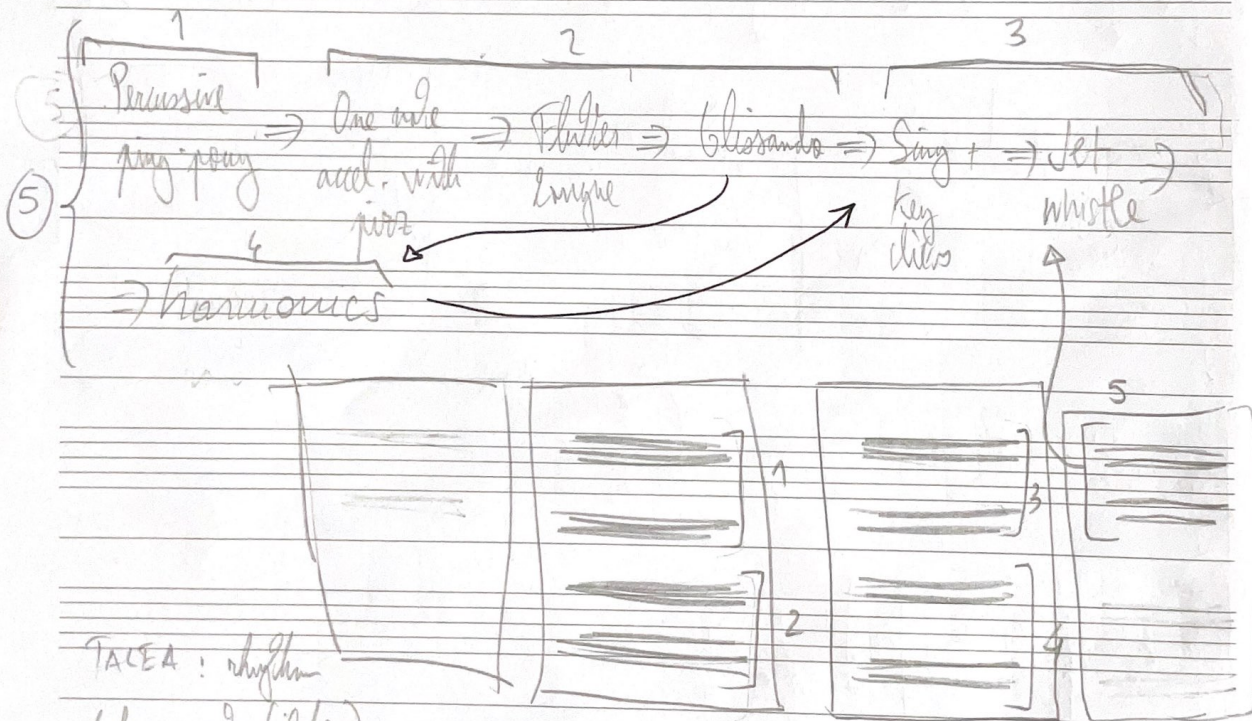
- Sing + key clicks

- Pizz → flatter tongue

- Harmonics & changing fundamentals

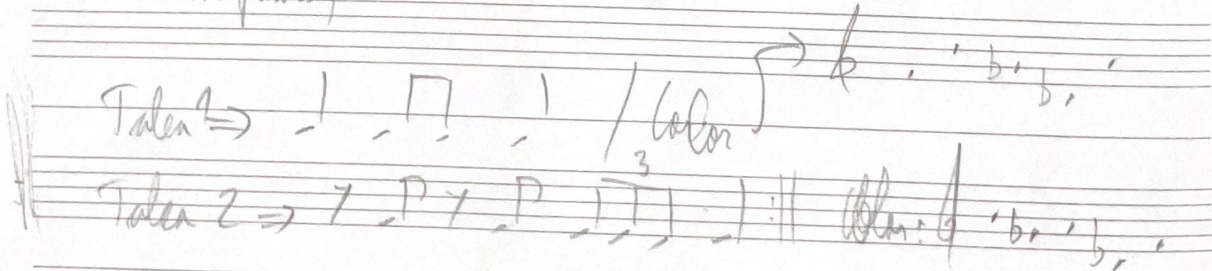
- Jet whistle: cement closed embouchure sounds with harmonics

Proposal for final section:



TALCA: rhythm

Color: notes (pitch)



SECTION 1 DRAFT 1 PETRA

1 TALEA = 4  
COLOR = 4

2 TALEA = 5  
COLOR = 4

ADAGIO con spirito

SECTION 2 DRAFT 1 PETRA

NO

Handwritten musical notation for the first system, consisting of two staves. The notation includes various rhythmic values, accidentals, and dynamic markings. A large, dense cluster of notes is present in the first measure of the top staff.


NO

Handwritten musical notation for the second system, consisting of two staves. The notation includes various rhythmic values, accidentals, and dynamic markings. A large, dense cluster of notes is present in the first measure of the top staff, with the annotation "TKTK" written above it.


NO

Handwritten musical notation for the third system, consisting of two staves. The notation includes various rhythmic values, accidentals, and dynamic markings. A large, dense cluster of notes is present in the first measure of the top staff.

A series of seven empty musical staves at the bottom of the page.

- Pizz ping pong is
- ~~stretch~~ crystallize on E
- Move to D# / F# → Back to E
- From E,  glissando towards harmonics

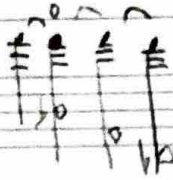
⊗ [harmonics] → taken & color → ending → Sing + Key clicks



The musical notation consists of two staves. The top staff begins with a series of vertical lines and arrows, followed by notes with sharp and double sharp accidentals. The bottom staff contains notes with sharp and double sharp accidentals, some with slurs and a final note with a sharp and a dot. A large bracket on the left side encompasses both staves.

# HARMONIC SECTION - Draft 1 (Petra)

(Flutter tongue)



gliss



AHL

(overblow)

(repeat)

①

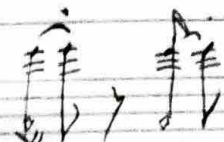


(overblow)



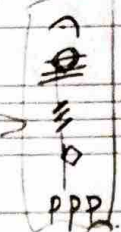
(repeat)

②

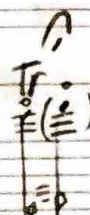


(Rhythm? Free?)

...



ppp



Tongue ram

③



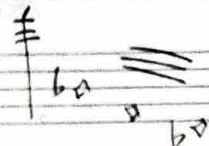
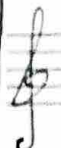
ppp

...

...



④



HARM ONIS SECTION 12  
Breath long

same as below

gliss

mf

start slowly → fast

gliss

mp

r

alternate ad libitum improvising rhythm and dynamic

quickly Alternate between these fingerings

repeat improvising the rhythm

get slower

Tongue runs

(next section)