

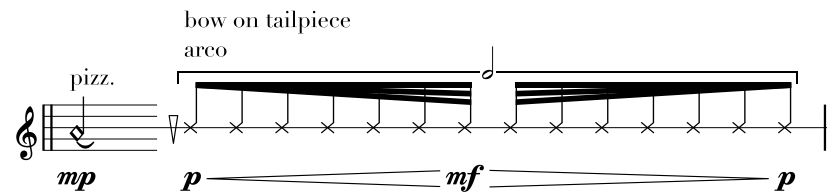
Note: dates not remembered

for ensemble and electronics

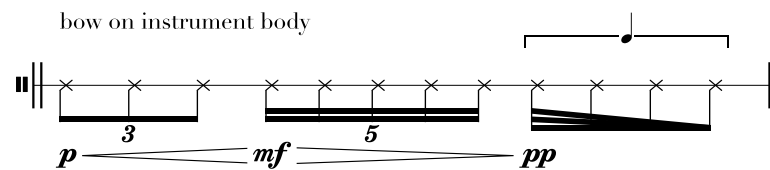
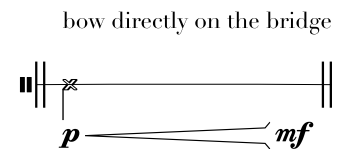
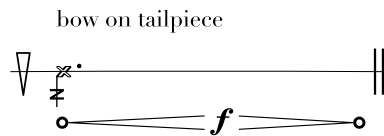
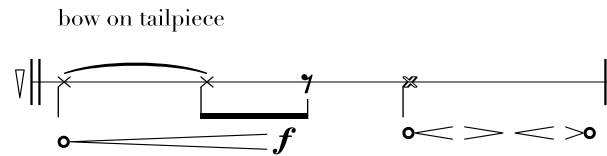
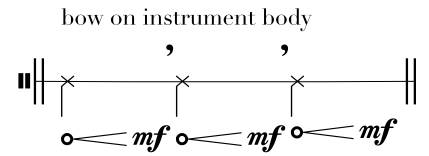
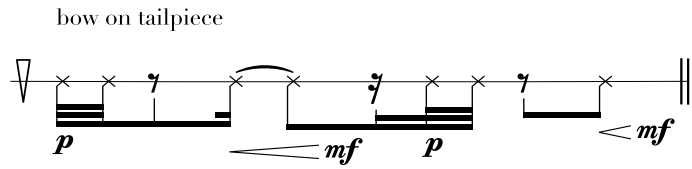
(2021/2022)

isaac barzso for sketch351

0:00 - 0:20
tacet



0:20 - 2:00
focus on interaction with
details of the tape



2:00

3:15

fl. $\text{♩} = 65$

mp

insert four times

p \rightarrow *f*

$\text{♩} = 60$

mf \circ *mf'*

insert three to four times

mf \rightarrow *pp*

continue until 3:15

tbn. $\text{♩} = 60$

mf

insert three times

p \rightarrow *mf*

follow p.f.

mf \circ *mf* \circ *mf*

insert three to four times

air only

f

continue until 3:15

percussion

large metal bell

soft mallets; roll with varying speeds, interacting with bowed piano

pp

continue until 3:15

pno $\text{♩} = 55$

bow with fishing line/ cassette tape

p \rightarrow *mf*

wait to change until tone changes in tape (2:35)

mf

bow with fishing line/ cassette tape

continue until 3:15

vc. $\text{♩} = 60$

(ord.)

p \rightarrow *mf* \rightarrow *p*

pp \rightarrow *mp*

pp

mp \rightarrow *pp*

rit.

follow fl.

p \rightarrow *mf* \rightarrow *p*

continue until 3:15

3:35

4:15

fl. $\text{♩} = 70$
 tbn. $\text{♩} = 55$
 percussion $\text{♩} = 50$
 pno $\text{♩} = 55$
 vc. $\text{♩} = 50$

smaller metal bell
 roll with soft mallet

air only

until 4:15

accel.

rubato

rubato

rit.

4:30 - 5:10

let texture drift away to nothing

musical notation in bass clef. The first measure is marked *pizz.* (pizzicato) and *mf* (mezzo-forte). The second measure is marked *arco* (arco) and *pp* (pianissimo). The notation shows a series of notes with a long, sweeping slur over them, indicating a continuous, sustained sound. The dynamics *pp*, *mp* (mezzo-piano), and *pp* are indicated below the notes.

5:10 - 5:40

tacet

*as few bow changes as possible

musical notation in bass clef. The notation shows a series of notes with a long, sweeping slur over them, indicating a continuous, sustained sound. The dynamics *mf* (mezzo-forte) are indicated below the notes.

musical notation in bass clef. The notation shows a series of notes with a long, sweeping slur over them, indicating a continuous, sustained sound. The dynamics *fp* (fortissimo) are indicated below the notes. The notation is labeled I. and II. at the top.

musical notation in bass clef. The notation shows a series of notes with a long, sweeping slur over them, indicating a continuous, sustained sound. The dynamics *fp* (fortissimo) are indicated below the notes.

III.
IV. multiphonic
m.s.p.

musical notation in bass clef. The notation shows a series of notes with a long, sweeping slur over them, indicating a continuous, sustained sound. The dynamics *pp* (pianissimo), *mp* (mezzo-piano), and *pp* are indicated below the notes.

musical notation in bass clef. The notation shows a series of notes with a long, sweeping slur over them, indicating a continuous, sustained sound. The dynamics *pp* (pianissimo), *f* (forte), and *pp* are indicated below the notes.

musical notation in bass clef. The notation shows a series of notes with a long, sweeping slur over them, indicating a continuous, sustained sound. The dynamics *fp* (fortissimo) are indicated below the notes. The notation is labeled 5 and 6 at the bottom.

5:40 - 6:45

fl. air only

mp

multi-phonic

mp

tb. highest possible pitch (indistinct; pitch can fluctuate)

mp

lowest possible pitch

mp

percussion assorted wood pieces

p

mf sub. pp

mf sub. *pp*

low-partial harmonic
(indeterminate)

pno

mp

15ma bassa

rit.

muted p

p

15ma bassa

II.
III.

vc.

f *pp* sub.

III.
IV.

pp *mp*

6:45

confidently assert the beginning of the new section

flute

♩ = 80

3 *p* *mp*

insert three times

mf *mf*

25-30"

trombone

♩ = 100

pp *mf* *pp*

with mute

mp *pp*

rubato

25-30"

percussion

♩ = 70

bass drum
soft mallet

mf

metal

fast, delicate crinkling sound

3 *mp*

25-30"

piano

♩ = 90

15^{ma}

p *mf* *p* *mf* *pp* sub. *mp* *pp* *f*

Ped.

8^{va}

25-30"

violin

♩ = 60

pizz.

f

vertical bowing

arco

p *mf* *pp* *fp* *ppp*

s.p.

5

accel.

follow fl.
insert four times

p *f*

25-30"

7:15

fl. → follow p.f.

tb. → follow vc.

percussion

bass drum
hard mallet

mf > pp

3

p

3

3

mf

mp

pp

wait for electronics cue (at 7:40)

insert two times

try to find harmonic
(specificity not necessary)

wait for electronics cue (at 7:40)

rubato

Ped.

15

vc.

s.p.

pp

p

3

mp

5

pp

p < mp

pp

mp

wait for electronics cue (at 7:40)

accel.

7:40

fl.

$\text{♩} = 70$
molto vib.

mf f pp mf mp mf p pp

half air

5

Play 2 times

follow p.f.
air sound

pp mf pp

wait for cello cue

tb.

with mute

3

Play 3 times

p f p sub. f p sub. f

air sound (without mute)

5

p mf p

p mf p

wait for cello cue

pp

percussion

$\text{♩} = 80$
soft mallet

circular movement (variable speed)
tremolo with brush

5

f mp p

Play 2 times

metal

fast, delicate crinkling sounds

mp

wait for cello cue

pp

pno

$\text{♩} = 60$

f p f

8va

p mf

Play 2 times

5

mf p

3

mf p

wait for cello cue

pp

vc.

$\text{♩} = 60$

ord.

m.s.p.

Play 2 times

II. ord.

III.

5

fp mf p

fp mf p

m.s.p.

5

6

mf pp

15"

rit.

8:15

fl. ¹⁰ →

tbn. →

percussion →

pno →

vc. *fp* *7 mp* *pp*

♩ = 70

air only

wait for electronics change (around 8:45)

follow vc. *mf*

5"

♩ = 75

IV. *mf*

II. III. *p*

f

IV. *mp* *mf* *pp*

I. II. *p* *3*

wait for electronics change (around 8:45)

rubato

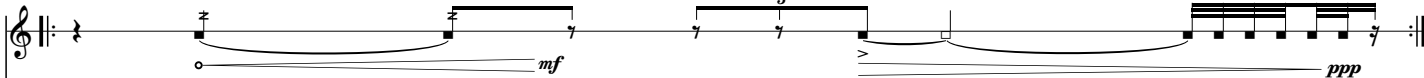
8:45

30-35"

♩ = 70

air only

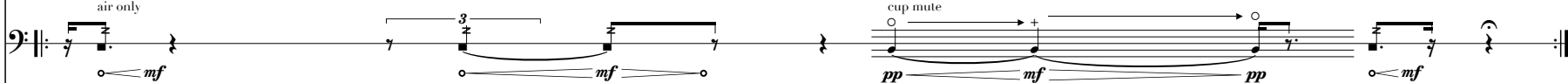
flute



♩ = 70

air only

trombone

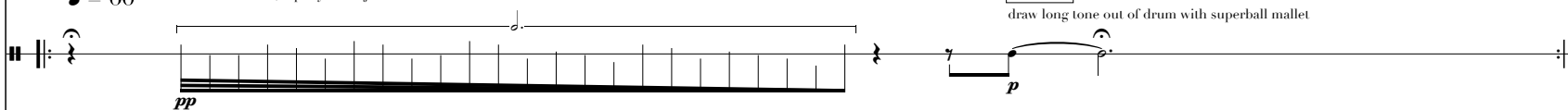


♩ = 60

metal

with soft mallet, rapidly hit objects ad lib.

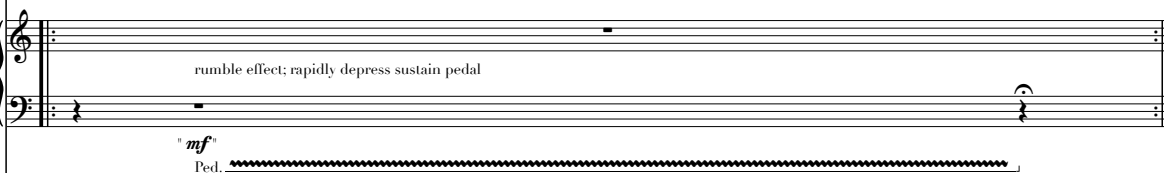
percussion



♩ = 60

rumble effect; rapidly depress sustain pedal

piano



♩ = 65

on the tailpiece

violoncello



9:15

fl.



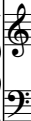
tbn.



percussion



pno



vc.



$\text{♩} = 60$

follow perc.

mf

mf

stop after piano

$\text{♩} = 50$

large log drum

small mallets; roll on center of each side

stop after piano

pp

mp

pp

follow p.f.

$\text{♩} = 50$

Play 2 times

ff

p

mf

p

f

p

9:45

10:15

fl.
tbn.
percussion
pno
vc.

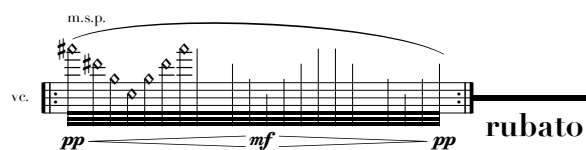
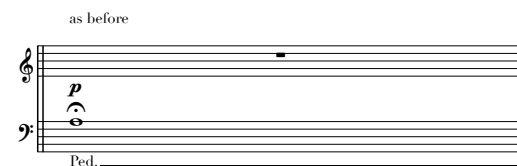
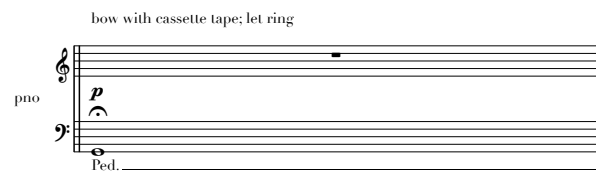
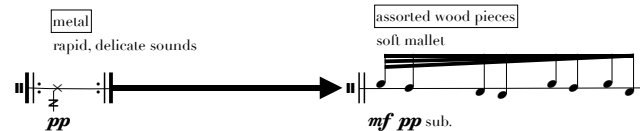
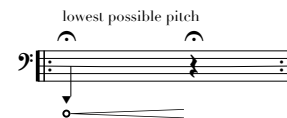
fl. $\text{♩} = 70$
air only

tbn. $\text{♩} = 70$
 f repeat until 10:15 pp

percussion $\text{♩} = 50$
small log drum
soft mallets; modify roll speeds and dynamics in uneven fashion
 p repeat until 10:15 pp

pno $\text{♩} = 60$
 mp f mp repeat until 10:15 pp

10:20 - 11:00



11:00 - 12:00

interject in bursts of energy

II.
III.

bow scrape only (left hand always muting strings)

mf sub. *p* *f* *mf* *pp* sub. *mf*

12:00 - 13:00

tacet

IV.

mf *mp* *pp*

II.
III.

sfz *pp*

I.
II.

mf *pp* sub. *f*

III.
IV.

mf *p* sub. *mf* *p* sub.

I.

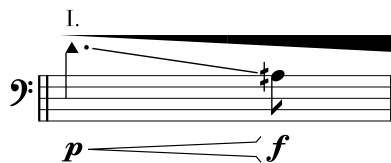
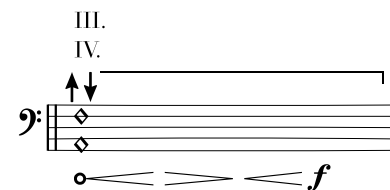
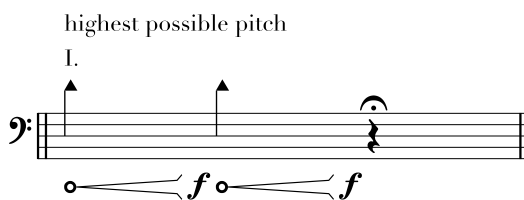
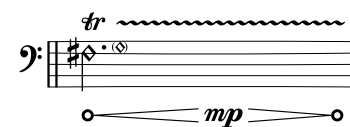
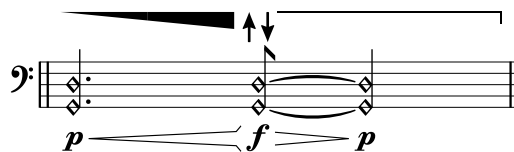
p *mf*

IV.

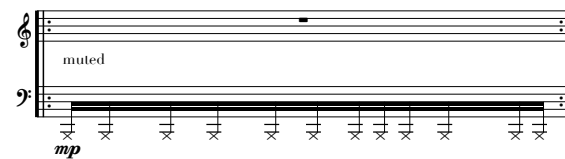
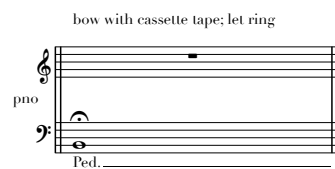
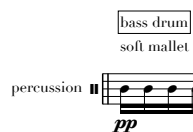
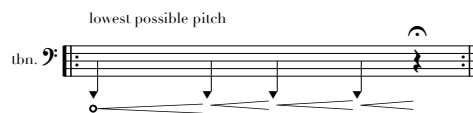
mf *pp* *f* *pp*

13:00 - 13:30

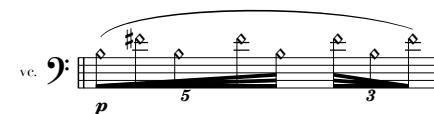
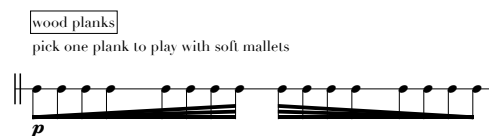
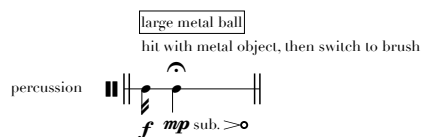
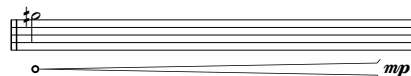
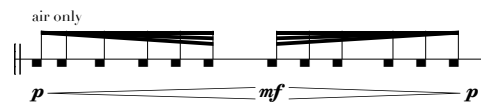
create texture of swells with ensemble



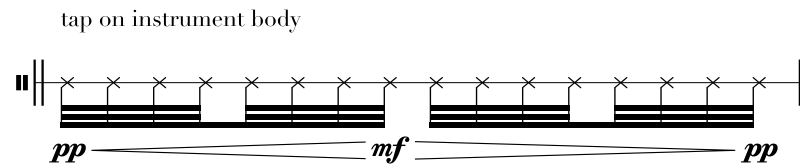
14:00 - 15:00



15:00 - 16:00

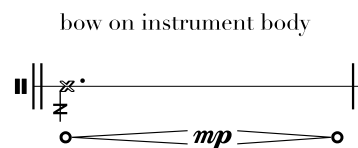
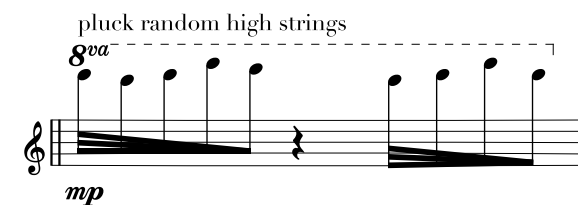
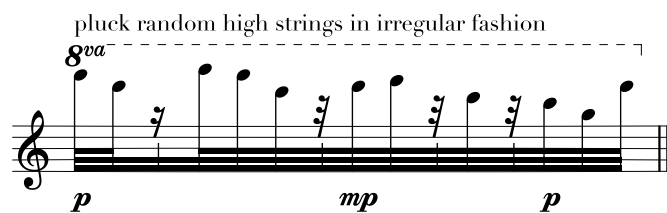
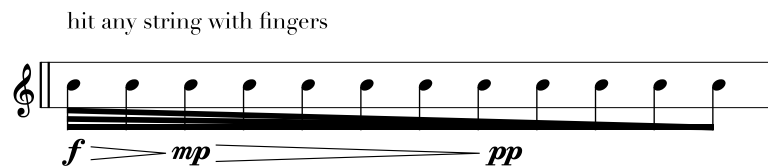
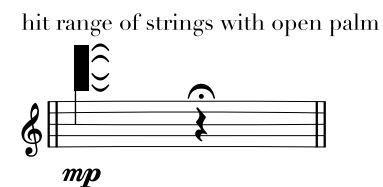
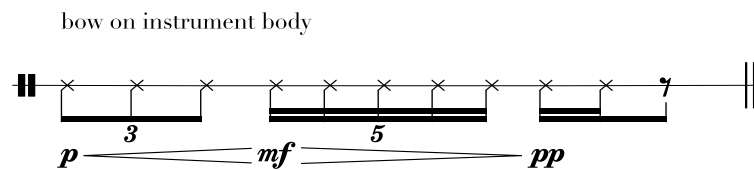


16:00 - 16:30
tacet



16:30 - 17:30

focus on interaction with those around you,
but do so sparsely



17:30

21:00

fl. ~30"

sing into piano
p

a a

tbn. ~45"

sing into piano
p

a a

percussion

piano frame
soft mallets; play on metal frame of piano
add accents ad. lib.

pp *p* *pp*

pno

bow with fishing line/ cassette tape

mp

transition around 19:00

p

vc. ~1'15"

inside piano
pluck high piano strings ad. lib.

pp *mf* *pp*