

*Dauvit Alexander  
Marianne Anderson  
Jivan Astfalck  
Stephen Bottomley  
Tim Carson  
Rachael Colley  
Bettina Dittlmann  
Christine Graf  
Joohee Han  
Kirsten Haydon  
Jeremy Hobbins  
Michael Jank  
Bridie Lander  
Anna Lorenz  
Sarah O'Hana  
Drew Markou  
Toni Mayner  
Simone Nolden  
Jo Pond  
Jo Pudelko  
Rebecca Steiner  
Elizabeth Turrell*

Jewellery and objects by twenty-two contemporary makers displayed alongside gemmological samples and photography that explores the interpretation and influence of Iron as catalyst, material and fundamental element of life.

A selection of contemporary metalwork and jewellery, ranging from steel vessels to recycled iron nail jewellery.

11 practicing artists and academic staff from Birmingham's eminent School of Jewellery and 11 invited international artists



Elizabeth Turrell & Stephen Bottomley Curators

**Museum Reich der Kristalle**  
 Mineralogische Staatssammlung München  
 Theresienstraße 41, 80333 München,  
 Germany  
 21<sup>st</sup> February - 16<sup>th</sup> March 2019



Dr Melanie Kaliwoda (right)  
 Museum Curator







Image | Hematite platBotryoidal hematite  
crystalelets in feldspar variety sunstone



Image | Colour zoning in sphalerite with fractures,  
and unknown primary inclusions



Image | Pyrite inclusions in picture quartz



Image | Iron oxide 'beetle leg' inclusions in  
strawberry quartz

**Miranda Wells**  
Microscope images  
Photos: BSC Gemmology, School of Jewellery





**Michael Jank and Bettina Dittlmann**

2 x Forever rings

3.5 x 3.,5 x 3.5 mm





**Bettina Dittlmann**

'Black Ephemeral Flower' brooch

Iron and magnet



**Timothy Limited /Tim Carson**

**‘This idea didn’t work’ (object, 2019)**

Mild Steel Shim 60mm (H) x 60mm (W) x 60mm (D)

**‘The technicolor flies will eat us all’ (badge, 2009/2019)**

Mild Steel, Stainless Steel, Magnets, Brass,  
Powdercoat 65mm (H) x 80mm (W) x 30mm (D)

**‘The redundant working machine’ (badge, 2008/2019)**

Mild Steel, Stainless Steel, Chrome, Brass 85mm  
(H) x 75mm (W) x 30mm (D)

**‘Nostalgia for an even sunnier past’ (badge, 2019)**

Mild steel

Mild Steel, Stainless Steel 75mm (H) x 75mm (W) x  
20mm (D)







**Jeremy Hobbins**

The Present

Cast Iron, Plastic and Copper

140x100x100





## Jo Pond

### Glaxo Set

Repurposed steel tin,  
steel, iron, silver,  
gemstones





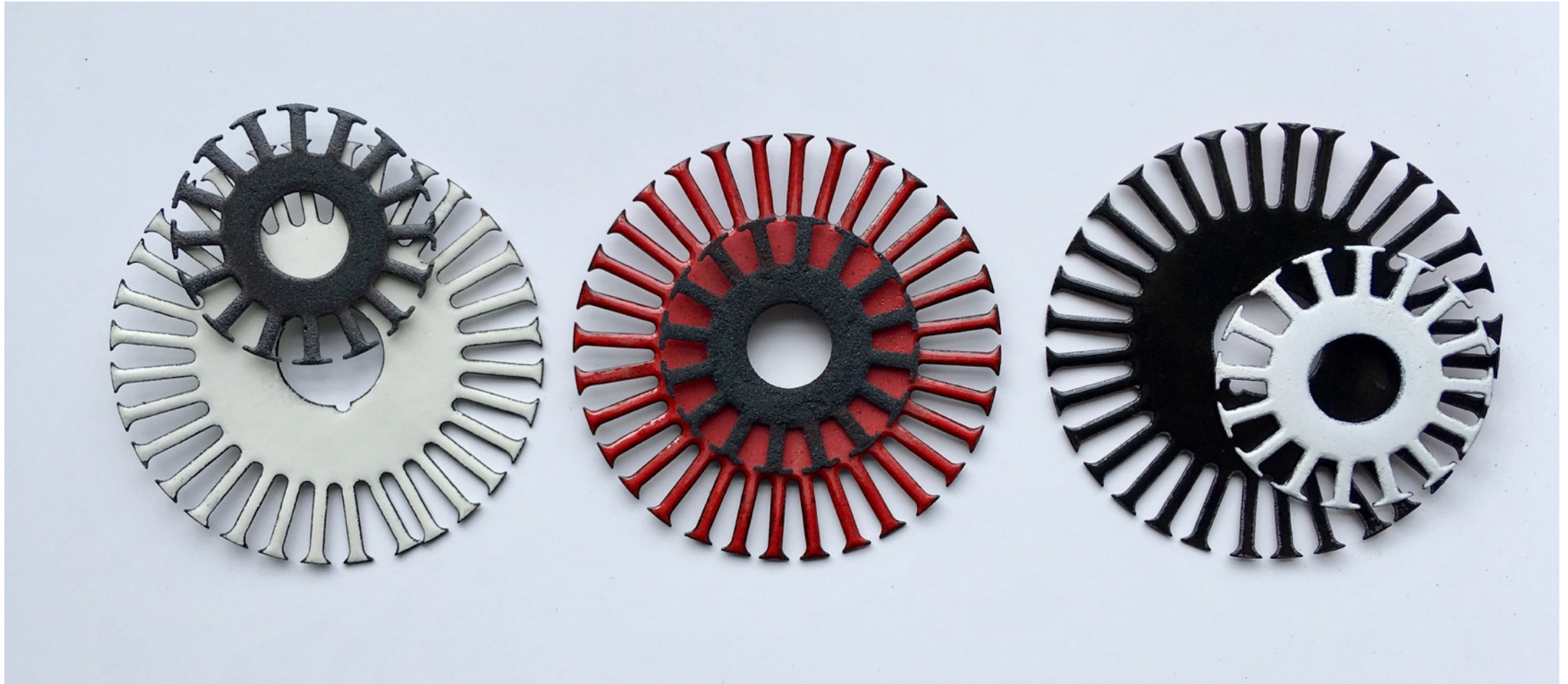
**Dauvit Alexander**

Sig Nuts

3 x rings

corroded pre-cut iron nuts; white metal and rough stones





**Elizabeth Turrell**

3 Brooches/Badges

Title: *Widget*

Materials: *found* steel with vitreous enamel & iron spangles

90mm Diam



**Sarah O'Hana**  
Obra VI Brooch  
white metal, reclaimed  
wood with steel nail,  
polymer mineral,





**Anna Lorenz**

Stages

15 steel cubes in stages of disintegration,

14mm square

Photographic image background 40x 40cm

approx







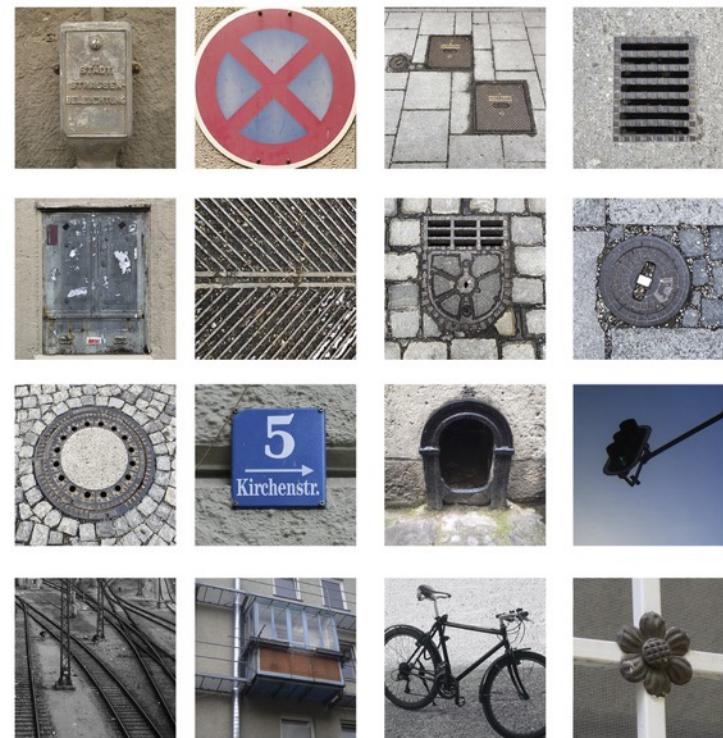
## Christine Graf

Iron marks

9 x brooches, 2019

silver, photographs, stainless steel pin

30mm x 30mm x 5mm





**Drew Markou**

Tower Necklace/object

50mm Diam x 40mm Height Material: Mild Steel, Jesmonite with steel powder, nylon cord)



**Bridie Lander**

Haemoglobin Molecule

brooch 1

Mild steel, white metal

Haemoglobin Molecule brooch 2

Copper, enamel + iron filings

50mm x 40mm





**Rachael Colley**

Tongues

mango stones, hematite (iron oxide) pigmented leather, hematite cabochon, iron, bamboo

260x320x35mm. Ovoid spoon



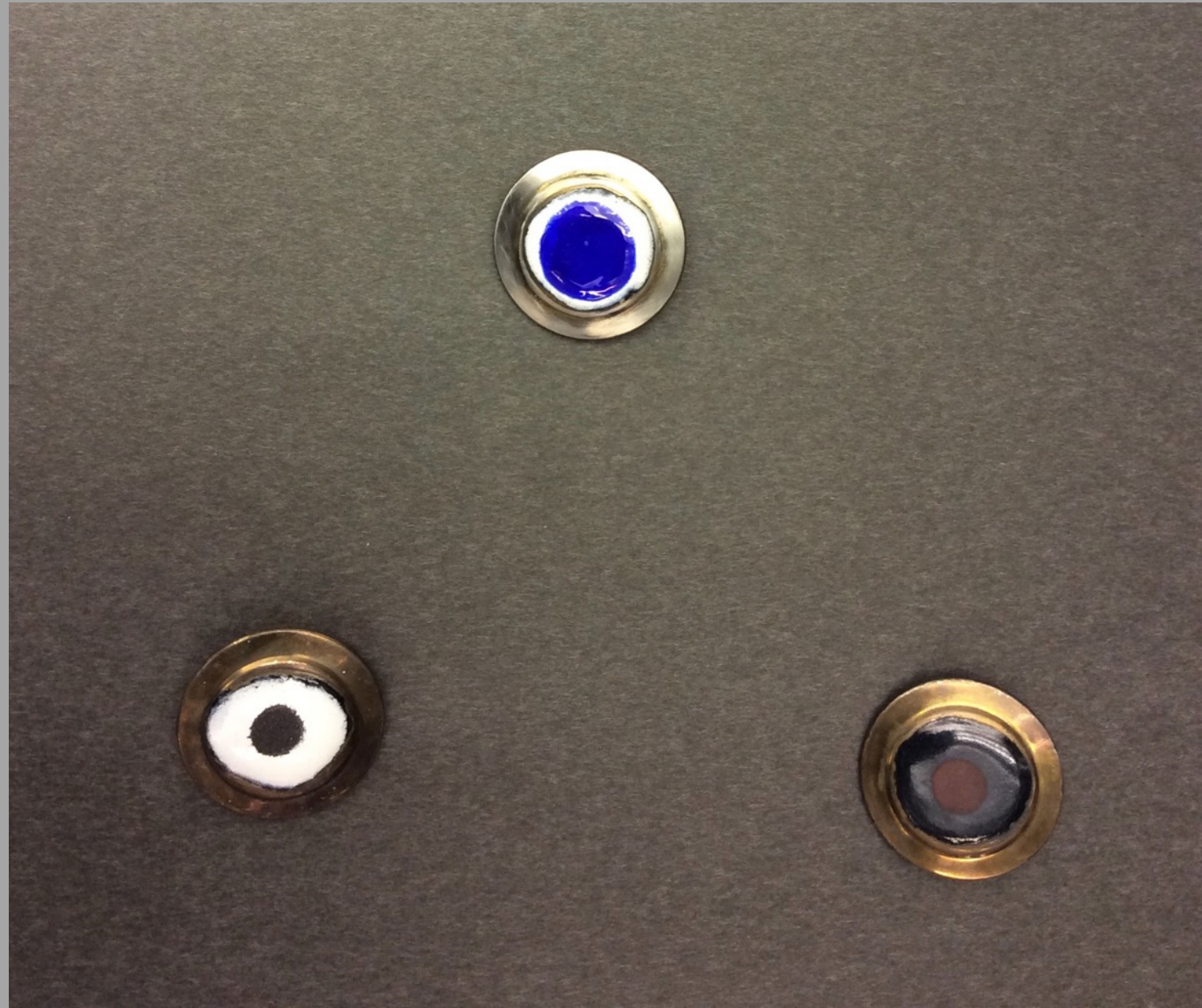


**Stephen Bottomley**

Watchers

Badges x 6

SSteel, enamel and nickel, 40mm Diam x 8mm





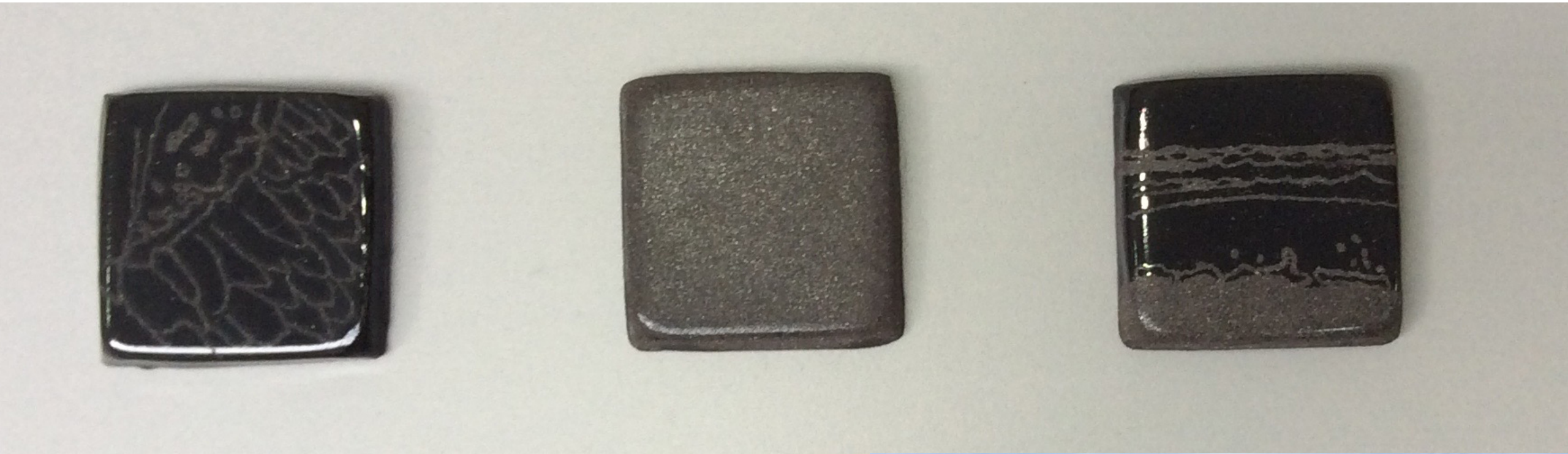
**Jivan Astfalck**

Of Iron Will and Roses

Six knives: iron & horn Brooch: Jean D'Arc - sterling silver & resin Brooch: Rose -- silk, silicon & white metal

Approx.:300x300 mm





**Kirsten Haydon**

Iron scapes

Brooches

Mild steel, enamel, stainless steel, Kariotahi iron sand  
55x55x7mm Approx





**Jo Pudelko**

Cylinder Necklace

Jesmonite & Iron

8x8x5.5 cm not incl. cord



**Toni Mayner**  
Pendant

‘Of this earth II’ 2019  
Re-claimed Iron Barrel Band, Fine Gold,  
Linen Thread, Sterling Silver





**Joohee Han**  
(Photographic image)  
Stainless Steel





**Marianne Anderson**

Cologne 1700 Dots Brooch White and yellow metal

Rebecca Steiner

Features: Elements of the  
City

Buttons / Pins

Silver, Mild Steel, Enamel,  
Glass



Once referred to as the "Workshop of the World", Birmingham is famous for its industry. Records from 1880-1917 show an ever-changing city peppered with production. From small scale backgarden workshops to foundries and factories, Birmingham's metal industry put it firmly on the map.

These pieces locate the factories and foundries of times past and mark a connection between the old and the new. Follow the grid references to see how these spaces have changed over time.

Features

elements of the city







**BIRMINGHAM CITY**  
University

School of  
Jewellery

FERROcity  
at Vitt  
Street  
Gallery  
School  
of  
Jewellery  
April  
2019