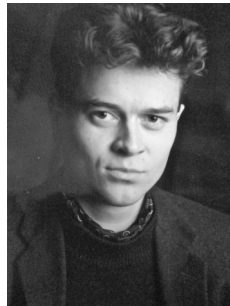
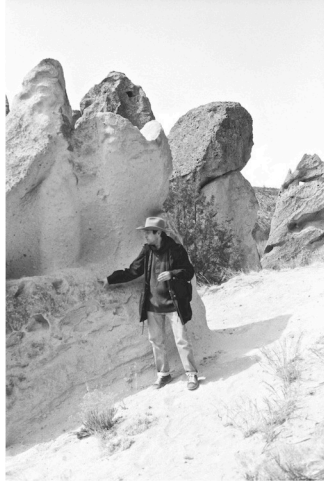


# KLAUS HU

## STUDIO KLAUS HU / BERLIN



contact **STUDIO**

**Wildenbruch 77**  
**12045 Berlin / Germany**  
**tel: +49.(0)30.68081524**  
**em: klaushu@yahoo.de**  
**skype: skypeklaushu**

**KLAUS HU IS REPRESENTED**  
**BY VG BILD-KUNST, Bonn, Germany**  
**Steuernummer 1635562802**  
**nach § 19 Abs 1 UStG**

### main links

CV / Bio (pdf for download) <https://www.slideshare.net/secret/kMGD3MrF3PKt4V>

WORKS <http://klaushu.blogspot.com>

<http://www.artslant.com/global/artists/show/419677-klaus-hu>

BOOKS <http://klaushu.blogspot.de/2013/07/books-editions.html>

VIDEO/KEYNOTES <http://youtube.com/klaushu>

INTERVIEW about UNSETTLED LANDSCAPES with Brainard Carey  
at YALE UNIVERSITY RADIO <http://museumofnonvisibleart.com/interviews/klaus-hu>

**KLAUS HU works with painting and photography that penetrate and complement each other, questioning representation and its cultural codes. He had been invited for a residency at SANTA FE ART INSTITUTE, NM, USA in 2013 > <https://sfai.org/residents/klaus-hu/> focusing on the Anthropocene in general, and on landscape, mining, uranium mining, water rights and property in the South West of the USA in detail. The outcome of the studio grant by SANTA FE ART INSTITUTE had been presented at SOMOS in Berlin as solo exhibition in 2015.**

**He took part in several international site-specific competitions from 2003 - today, like MAXXI, Rome, Italy, SHARJAH, UAE and GERMAN PARLIAMENT, Berlin, Germany. He expanded his studio-based research practice via curatorial training, and took part in several solo- and group exhibitions on a national and international level. Further he selfpublished 5 books on painting/ photography, and had been invited for international conferences for paper presentations (ISEA SINGAPORE 2008, funded by IFA/Stuttgart). His main subjects in the studio based process and for research are:**

- 1: strata / geology / genealogy of history**
- 2: the digital / the sensual / appropriation**
- 3: landscape / the Anthropocene / conflicts on resources**
- 4: escapism / otherworldly / sci-fi and narrative territories**

## **CURRENTLY IN THE STUDIO**

**LAYERS OF TIME redux 2017 / 18**

*research for a curatorial project on the layers of history and how archives interconnect with the studio based process. various artists from the US and Europe. in progress.*

**A KIND OF BLUE 2016 / 17**, refines one color as the main subject for narrative and abstract responses on daily / subjective and on geopolitical issues. studio-based.

**STRIPES 2015 / 16**, a series of new paintings challenges the historical and the digital archive as source of citation as a different kind of perception and of discourse. studio-based.

## **most recent / selection of EXHIBITIONS and PARTICIPATIONS**

**2015 UNSETTLED LANDSCAPES**, solo exhibition at SOMOS, Berlin, Germany.

**2013 Residency at SANTA FE ART INSTITUTE**, Santa Fe, New Mexico, USA.

**2011 Exhibition at GERMAN PARLIAMENT**, participation in site-specific competition. Germany.

**2009 Participation in open call MAXXI**, Rome, site-specific. Italy.

**2009 Participation in open call, SHARJAH BIENNALE**, site-specific. UAE.

**2008 Invited for ISEA SINGAPORE**. Singapore.

Presented lecture **SPACE AND NARRATIVE IDENTITY**. Funded by IFA, Stuttgart.

## **BOOKS**

**1: PAINTING KLAUS HU 2006 / 16**

**2: SPIRAL JETTY ACOMA BANDELIER 2013 / 14**

**3: NEW MEXICAN TRAVELS 2013**

**4: MARS\_SPIRIT 2009 / 12**

**5: NY 92/12**

# **CV / KLAUS HU**

**1963 born in Heidelberg / Germany, living and working in Berlin**

## **studies**

**2011 curatorial training at UdK, University of the Arts, Berlin**

**1998 / 99 guest study in Visual Studies at Katharina Sieverding, UdK (University of the Arts), Berlin**

**1985 / 91 studies in stage design, photography, video, UdK, (University of the Arts) Berlin at Achim Freyer & Marcel Odenbach**

**1982 / 83 studies in Anthropology, Germanic- and Romance literature University Heidelberg**

## **fellowships / prizes / residencies**

**2013 Santa Fe Art Institute Residency / New Mexico / USA / studio grant**

**ALUMNI PAGE** <https://sfai.org/residents/klaus-hu/>

<http://sfai.org/april-artists-in-residence-readings-and-open-studio/>

<http://sfai.org/march-open-studios/>

<http://klaushu.blogspot.de/2011/10/unsettled-landscapes-2013-15.html>

**INTERVIEW about UNSETTLED LANDSCAPES with Brainard Carey**

**at YALE UNIVERSITY RADIO** <http://museumofnonvisibleart.com/interviews/klaus-hu>

**1992 fellowship for photography, Senate of Berlin, catalogue, group show at Martin Gropius Bau, Berlin**

**1992 special merit award JVC video festival Tokyo for "STAGEBOX"**

## **conferences**

**2008 ISEA Singapore / conference / artist/paper presentation / funded by IFA / Stuttgart**

<http://www.slideshare.net/klaushu/i-s-e-a-2008-k-l-a-u-s-h-u-conference-paper>

**2007 Mutamorphosis / Leonardo Forum Prague and Re-Place Berlin**

## **assistances**

**1988 assistance for Robert Wilson, stage design and directing**

## **exhibitions / solo and groups**

**2015 UNSETTLED LANDSCAPES, Somos Arts, Berlin, solo exhibition**

<http://www.somos-arts.org/unsettled-landscapes/>

<http://www.artslant.com/global/artists/show/419677-klaus-hu>

<http://klaushu.blogspot.de/2016/08/exhibitions.html>

**2013 OPEN STUDIOS at Santa Fe Art Institute, Santa Fe, New Mexico, USA,**

**group presentation / ALUMNI PAGE** <https://sfai.org/residents/klaus-hu/>

<http://sfai.org/april-artists-in-residence-readings-and-open-studio/>

<http://sfai.org/march-open-studios/>

**2011 KUNST\_RAUM at German Parliament (Deutscher Bundestag, Berlin) presentation / exhibition of site-specific concepts (Kunst am Bau), group exhibition**

<http://www.slideshare.net/klaushu/01huklauscompetition1-8529659>

**2011 DIFFERENT WORLDS at Skalitzer140, Berlin, group exhibition**

**2010 END OF SUMMER SHOW at Atelierhof Berlin, group exhibition**

**1992 JAHRESLABOR, MARTIN GROPIUS BAU, Berlin / fellowship of Berlin Senate, group exhibition, catalogue**

**1989 NEW WORKS, paintings, Gallery Deplana, Berlin, solo exhibition**

## **participation in site-specific competitions**

<http://klaushu.blogspot.de/2011/06/curatorial-research-site-specific.html>

**2016 FAENA ART SPACE, Buenos Aires, Argentina, not commissioned**

**2010 MARIE ELISABETH LUEDERS HAUS, Berlin, open call, exhibition (2011)**

**2009 SHARJAH BIENNALE, UAE, participation in open call**

**2009 MAXXI, Rome, participation in site-specific competition**

**2008 Celeste Kunstpreis Berlin, competition, participation, catalogue**

**2005 McCormick Freedom Museum, Chicago, competition**

**2005 PUBLIC ART FUND, competition, New York**

**2005 BUSAN BIENNAL, outdoor project, open call, Busan**

**2004 VENEZIA, site-specific competition per la realizzazione di opera d'arte nella nuova Cittadella della giustizia**

**2003 Arriyadh housing competition, Riyadh, Saudi Arabia**

**curatorial projects** via <http://klaushu.blogspot.de/2011/06/curatorial-research-site-specific.html>

**2017 / 18 LAYERS OF TIME / research in progress**

**2011 MAPS, research for an exhibition project for Berlin, not realized**

**2006 BODIES DESIRES, curatorial, for ApexArt NY**

### **video screenings**

**2003 STILL RUN REMIX & NY PILOT, ART FORUM, Berlin, installation DVD**

**1991/98 video screenings at international media- and videofestivals: Sao Paulo, Brazil, JVC Tokyo, Japan (special merit award), Cinema Arsenal, Berlin, WRO Wroclaw, Poland, EMAF Osnabrück, Germany, AVE Arnheim, Netherlands.**

**most recent completed keynotes / presentations** via <http://youtube.com/klaushu>

**2015 UNSETTLED LANDSCAPES keynote, 35 min**  
**keynote on land-use and resources of the North American South-West.**  
**photos / texts / editing © Klaus Hu 2015**  
**additional courtesy: Timothy O Sullivan**  
**courtesy Library of Congress**  
**High Desert Test Site © Andrea Zittel**  
**books © the writers / authors**  
**research photos / re. uranium tailings courtesy Center For Land Use / CLUI**  
**State of Mind, New California Conceptual Art ca 1970,**  
**courtesy University of California Press, Berkeley Art Museum**  
**Pacific Film Archive**

**2013 / 15 NEW MEXICAN TRAVELS 6.30 min book presentation**  
**photos / editing © Klaus Hu 2013/15**  
**BANDELIER 4.25 min**  
**site-visit of archeological site in New Mexico, USA near Los Alamos Labs.**  
**photos / editing © Klaus Hu 2013/15**  
**ACOMA 4.24 min site-visit of first nation reservation in New Mexico, USA**  
**photos / editing © Klaus Hu 2013/15**  
**SPIRAL JETTY 5.57 min**  
**site-visit of SPIRAL JETTY by Robert Smithson, 1969/70 at Salt Lake,**  
**near Salt Lake City, Utah, USA , 2013**  
**photos / editing © Klaus Hu 2013/15**

**2009 / 12 MARS\_SPIRIT 5.18 min**  
**a fictional reflection about the escapist landscape of Mars.**  
**source images courtesy NASA / JPL Caltech.**  
**voiceover: Christopher Johnson**  
**text excerpt: by Peter Allen "2035"**  
**editing © Klaus Hu 2013**

## **bibliography / books**

**p-reviews** <http://klaushu.blogspot.de/2013/07/books-editions.html>

- 2012/16..PAINTING 2006/16, BOOK  
hardcover, 90 pages, 80 photos, col, 8 1/2 "x 11", ltd ed 25
- .....SPIRAL JETTY ACOMA MADRID BANDELIER, BOOK  
hardcover, 60 pages / 33 photos / collectors edition of 5 + 1 AP
- .....NEW MEXICAN TRAVELS, BOOK  
hardcover, 100 pages, 116 photos, limited ed of 25
- .....MARS\_SPIRIT, BOOK  
hardcover, 84 pages, 51 phot, col, 8 1/2"x 11", limited edition of 25
- .....NY 92/12, BOOK  
hardcover, 74 pages, 100 photos, b / w & col, 8 1/2 "x 11", ltd ed 25
- 2010.....TRILOGY MARS DESERT BEACH, 3 booklets,
- 2008.....ISEA Singapore, conference proceeding,  
<http://www.slideshare.net/klaushu/documents>
- 2008.....CELESTE KUNSTPREIS BERLIN, catalogue
- 2001.....ARTISTSPACE NY, onlinefile <http://local-artists.org/users/klaus-hu>
- 1992.....JAHRESLABOR BERLIN, Berlinische Galerie.Germany.groupshow.cat
- 1992/96..JVC.VIDEOFESTIVAL.TOKYO.Japan.cat

KLAUS HU IS REPRESENTED BY VG BILD-KUNST, Bonn, Germany  
Steuernummer 1635562802 nach § 19 Abs 1 UStG

## **random links**

[INTERVIEW at YALE RADIO](#)  
[ALUMNI PAGE / SANTA FE ART INSTITUTE 2017](#)  
[keynote LANDSCAPE THE ARCHIVE & ESCAPE](#)  
[keynote ON LANDSCAPE, THE ARCHIVE AND ESCAPE / KEYNOTE BY KLAUS HU 2013](#)  
[video PAINTING 2017 / 2006](#)  
[UNSETTLED LANDSCAPES KEYNOTE © KLAUS HU 2015](#)  
[Blue Mesa review 35](#)  
[SOMOS Berlin website 2015](#)  
[ARTCONNECT / Open Studio](#)  
[Santa Fe Art Institute 2013 / Open Studio](#)  
[Research catalogue / Mars Spirit 2012](#)  
[Artists Space NY online file](#)  
[LANDSCAPE, THE ARCHIVE AND ESCAPE / TEXT 2013/15](#)  
[selected papers / documents 2006/15](#)  
<https://www.slideshare.net/klaushu/presentations>