

Performing with Plants

Resting with Pines in Nida

Annette Arlander 2017



Performing with plants / Att sam- agera med växter

artistic research projected funded by
Kone Foundation (2017) and
Vetenskapsrådet or the Swedish
Science Foundation (2018-2019)

[https://www.researchcatalogue.net/
view/316550/316551](https://www.researchcatalogue.net/view/316550/316551)

“Performing with plants’ is an artistic research project aiming to investigate the question ‘how to perform landscape today?’. A post-humanist perspective prompts us to rethink the notion of landscape, and to realize that the surrounding world consists of life forms and material phenomena with differing degrees of volition, needs and agency. What forms of performing landscape could be relevant in this situation? One possibility is to approach individual elements, like singular trees, and explore what could be done together with them. The most important inquiries to be explored are: 1) How to collaborate with nonhuman entities like plants? 2) How to further develop experiences from previous attempts at performing landscape? 3) How to create actions with plants, in which humans can be invited to participate? An overarching research topic is: How to perform landscape today by collaborating with trees and other plants, with an awareness of the insights generated by post-humanist and new-materialist research? The aim of the project is to develop techniques generated during previous work by the applicant, i.e. the twelve-year project *Animal Years* (2002-2014), where focus was on showing changes in the landscape over time, rather than collaboration with the trees. By collaborating with plants more sensitively and ecologically, sustainable modes of performing can be developed, in order to serve as inspiration and provocation regarding ways of understanding our surrounding world.”

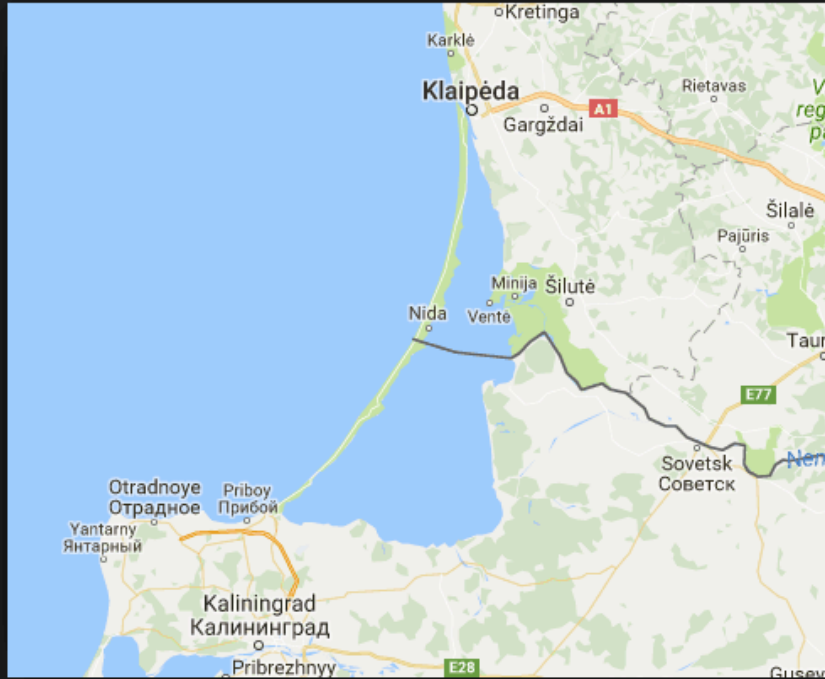
Example of practices in 2017

- Year one with plants - a snapshot of plants every day (on tumblr)
- Performances for camera in Stockholm - visiting two trees in Stockholm every month
- Performances for camera in Helsinki - visiting two trees in Helsinki a few times every week
- Tree Calendar in Helsinki, tree of the month, based on the Celtic Calendar
- Other experiments - performing for camera with trees I meet on travels
- Explorations in the bushes with Kirsi Heimonen
- Organizing seminars on working with plants (3.5. 2017 and 27.10.2017)
- Presentations in various contexts, seminars and conferences
- Exhibitions and publications, some based on old works

Example: Resting with Pines in Nida

During a residency at Nida Art Colony in Lithuania in September 2017 I experimented with ways of performing with the pine trees in the area, mainly by posing with them for a video camera on tripod, as part of the research project *Performing with plants*. In this presentation, I will show some of the material and reflect on the problematic legacy of romantic landscape representations as well as possible ways of utilising it for contemporary purposes.

“The Curonian Spit was formed by massive sea winds 10,000 years ago, which makes it a little younger than mankind. So it is only fitting that its story should be of humans taming unpredictable natural processes to suit their own desires. Given its history, you could say that even the spit's most deceptively natural areas are really monuments to human striving.”
(Paul Morton, The Baltic times 23.8.2006)



The Curonian Spit is home for some of the highest...

Pinterest - 487 × 400 - Search by image

The Curonian Spit is home for some of the highest sand dunes in Europe and is

[Visit](#)

[View image](#)

[Save](#)

[View saved](#)

[Share](#)

Related images:





Nida Art Colony | Transartists

Transartists - 1024 × 683 - Search by image

Nida Art Colony

[Visit](#)

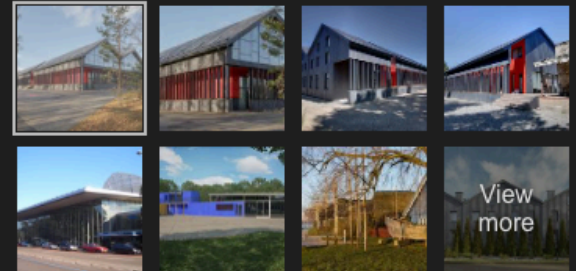
[View image](#)

[Save](#)

[View saved](#)

[Share](#)

Related images:



Images may be subject to copyright. - [Get help](#) - [Send feedback](#)



Artwork >> Valentinas Yla >> Evening In Nida #art...

Pinterest - 731 x 550 - Search by image

Artwork >> Valentinas Yla >> Evening In Nida #artworks, #masterpiece,

[Visit](#)

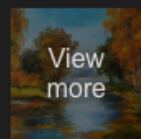
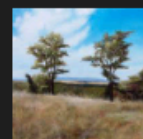
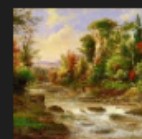
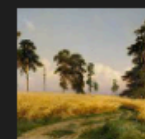
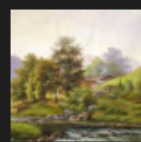
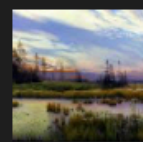
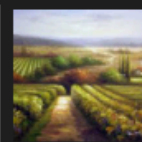
[View image](#)

[Save](#)

[View saved](#)

[Share](#)

Related images:





20 best Artworks Valentinas Yla images on Pintere...

Pinterest - 720 × 550 - Search by image

Artwork >> Valentinas Yla >> 2010 Plainair in Nida (I) #artwork

[Visit](#)

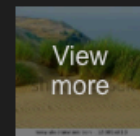
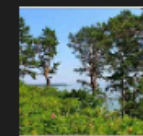
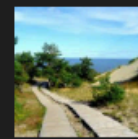
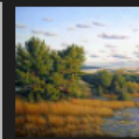
[View image](#)

[Save](#)

[View saved](#)

[Share](#)

Related images:





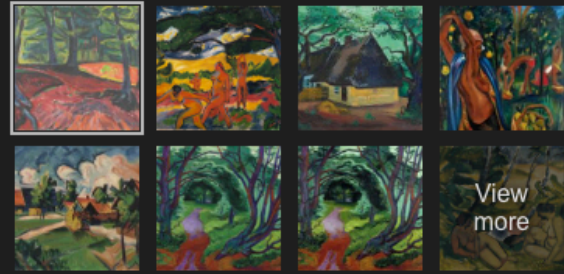
Waldinneres - Auktionshaus Lempertz

Auktionshaus Lempertz - 2560 × 1579 - Search by image

Hermann Max Pechstein, Waldinneres, 1919, Auction 1004 Modern Art, Lot 210

- [Visit](#)
- [View image](#)
- [Save](#)
- [View saved](#)
- [Share](#)

Related images:





Waldinneres - Auktionshaus Lempertz

Auktionshaus Lempertz - 2560 × 2076 - Search by image

Hermann Max Pechstein, Waldinneres, 1919, Auction 1004 Modern Art, Lot 210

[Visit](#)

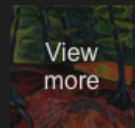
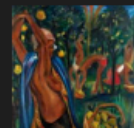
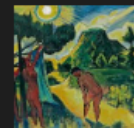
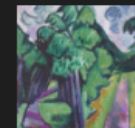
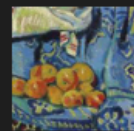
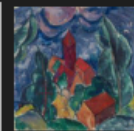
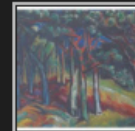
[View image](#)

[Save](#)

[View saved](#)

[Share](#)

Related images:



Images may be subject to copyright. - [Get help](#) - [Send feedback](#)



Kuršių Nerija National Park | Nida | AFAR

AFAR Media - 954 × 719 - Search by image

Exploring the sand dunes and pine forests of Lithuania's Baltic coast

[Visit](#)

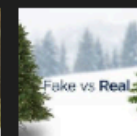
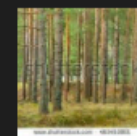
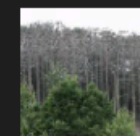
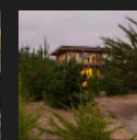
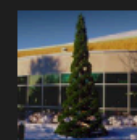
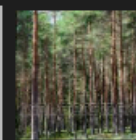
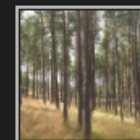
[View image](#)

[Save](#)

[View saved](#)

[Share](#)

Related images:



Some experiments to rest with the pines in Nida













Playing with a go pro camera, walking in the woods in Nida







Sunday with a pine – visiting it every two-hours for a day







Playing with distances to one tree – close, further away or in the tree

















And then some video clips.....