

BILD 1

♩=96

Posaune

p *p* *ppp* *pp*

Gitarre

mp *gliss.* *gliss.* *mp* *pp*

Klavier

mp > pp *pp* *pp* *pp*
f *p* *mp* *mp* *mp*

mp *f* *f* *mp* *mp*
f *mf* *mp*

pp *pp* *pp* *pp* *pp*
p *f* *mp* *p* *f*

Violine

Violin score with dynamics: *fp*, *pp*, *mf*, *fp*, *mp*, *p*. Includes articulation marks like accents and slurs.

Violoncello

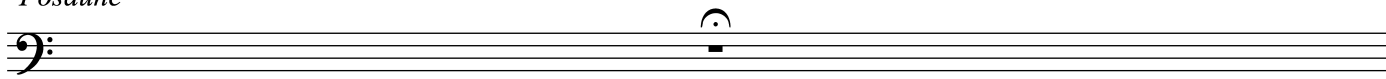
Cello score with dynamics: *mf*, *p*, *pp*, *p*, *mf*, *p*. Includes articulation marks like accents, slurs, and *pizz.* *arco*. Includes performance instructions: *or f > p*, *or fp*, *sul tasto*.

SIGNAL 1-2
KLAVIER

Piano score with dynamics: *f*, *pp*, *pp*, *p*, *mp*. Includes articulation marks like accents and slurs.

BILD 2

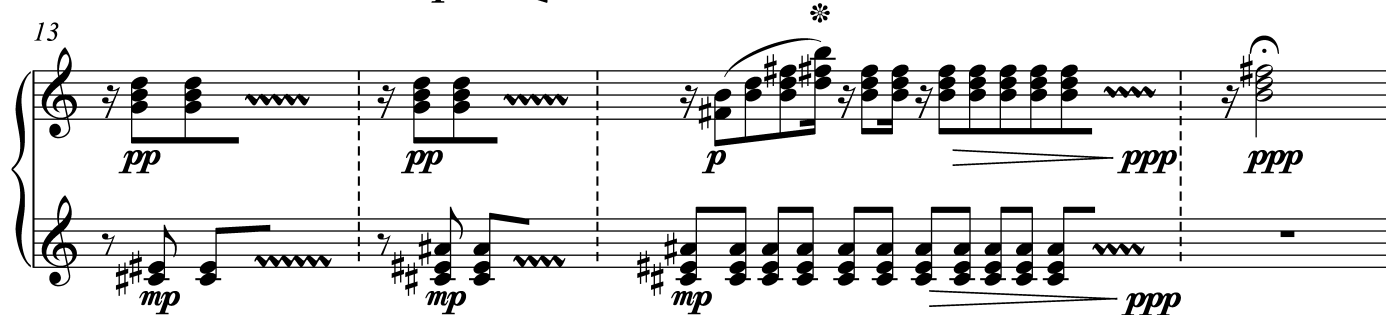
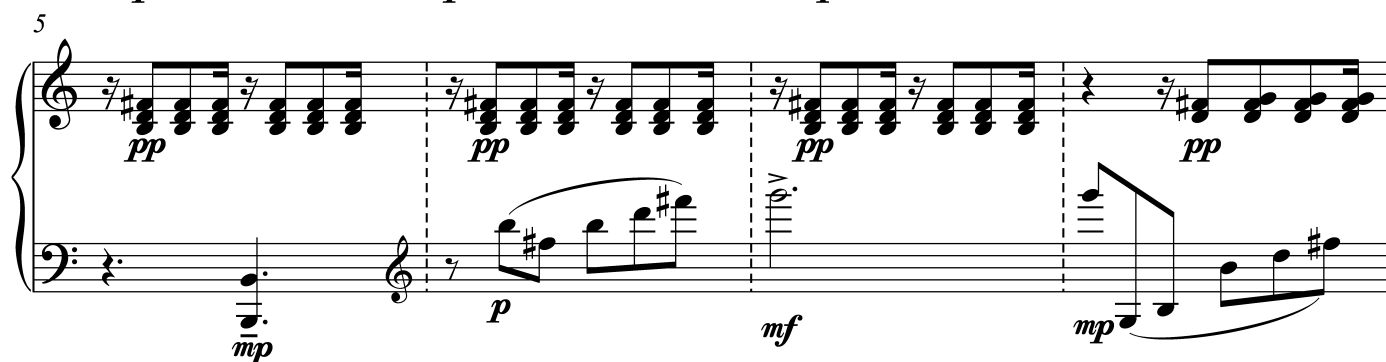
Posaune



Gitarre



Klavier



Violine

Violin staff with notes and dynamics. The first measure has a half note G4 with a sharp sign, marked *pp*. The second measure has a whole note G4 with a sharp sign, marked *ppp*. The third measure has a half note G4 with a sharp sign, marked *pp*.

Violoncello

Violoncello staff with notes and dynamics. The first measure has a quarter note G2, marked *p*. The second measure has a quarter note G2, marked *p*. The third measure has a quarter note G2, marked *pppp*.

SIGNAL 2-3
VIOLINE - KLAVIER

♩=96

Violin and Piano accompaniment staffs. The violin part features a series of triplets, marked *p*, *mf*, and *f*. The piano part features a series of triplets, marked *pp* and *mp*.

BILD 3

Posaune

p *p*

Gitarre

mp *mp* *mp* *mp* *mp* *mp* *mp* *mp*

Klavier

pp *pp* *pp* *pp* *pp*

mf *mp* *mp* *mp* *mp* *mp*

pp *p* *pp* *pp* *pp*

mp *mp* *mp* *mf* *mp*

p *p* *pp* *mp* *p*

mp *mp* *mp*

Violine

Violin staff 1: Treble clef, starting with a whole rest. A slur covers a sixteenth-note ascending scale from G4 to D5. Dynamics: *mf* (under the start of the scale) and *mp* (under the end of the scale).

Violin staff 2: Treble clef, starting with a sixteenth-note ascending scale from G4 to D5. Dynamics: *p* (under the start). A slur covers a sixteenth-note ascending scale from E5 to B5. Dynamics: *mf* (under the start), *p* (under the end), and *pp* (under the final note). *tr. accel.* is written above the slur.

Violoncello staff: Bass clef. Dynamics: *pp* (under the first note). *pizz. or arco* is written above the staff. Dynamics: *p* (under the first note of the second measure), *ppp* (under the first note of the third measure), and *pp* (under the first note of the fourth measure). There are also dynamic markings *<* and *>* at the end of the staff.

SIGNAL 3-4
KLAVIER

Klavier staff: Treble and bass clefs. Treble clef: Dynamics: *p* (under the first chord), *ppp* (under the last chord of the first measure), and *pp* (under the first chord of the second measure). Bass clef: Dynamics: *mp* (under the first chord), *mf* (under the first note of the second measure), *mp* (under the first chord of the second measure), *mf* (under the first note of the third measure), and *p* (under the last note of the third measure). There are also dynamic markings *<* and *>* at the end of the staff.

BILD 4

Posaune

Musical notation for Horn (Posaune) in bass clef. The piece consists of four measures. The first measure has a half note G2 with a fermata, marked *pp*. The second measure has a half note A2 with a fermata, marked *p*. The third measure has a half note B2 with a fermata, marked *p*. The fourth measure has a half note C3 with a fermata, marked *pp*.

Gitarre

Musical notation for Guitar (Gitarre) in treble clef. The piece consists of two staves. The first staff has four measures of eighth-note triplets, each marked *mf*. The second staff has four measures of eighth-note patterns, each marked *mf*.

Klavier

Musical notation for Piano (Klavier) in grand staff. The piece consists of two staves. The first staff has four measures of chords, each marked *pp*. The second staff has four measures of chords, each marked *p*.

Rechts und links nach Belieben kombinieren, jede Figur ist wiederholbar

Musical notation for Piano (Klavier) in grand staff. The piece consists of two staves. The first staff has four measures of chords, each marked *pp*. The second staff has four measures of chords, each marked *pp*.

Violine

Musical notation for Violin (Violine) in treble clef. The piece consists of two staves. The first staff has four measures of half notes, each marked *p*. The second staff has four measures of eighth-note patterns, each marked *pp/mp*.

In Antwort zur Gitarre/
frei im Tempo

Musical notation for Violin (Violine) in treble clef. The piece consists of two staves. The first staff has four measures of eighth-note patterns, each marked *pp/mp*. The second staff has four measures of eighth-note patterns, each marked *pp/mp*.

legato
or non legato

legato
or non legato

BILD 6

Posaune

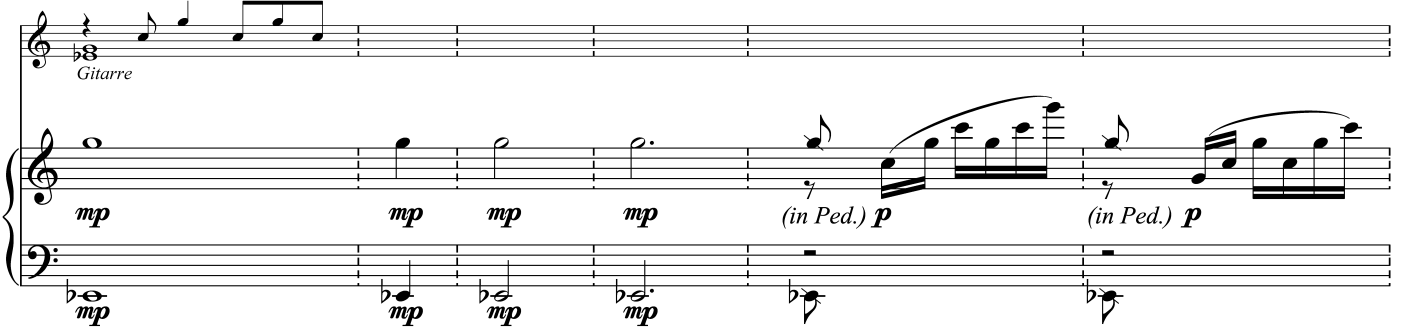


*beliebig viele Male wiederholen und aufhören;
danach diese Figur nicht mehr anfangen.*

Gitarre

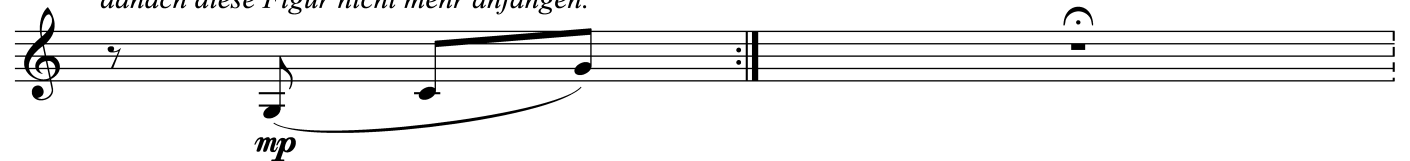


Klavier

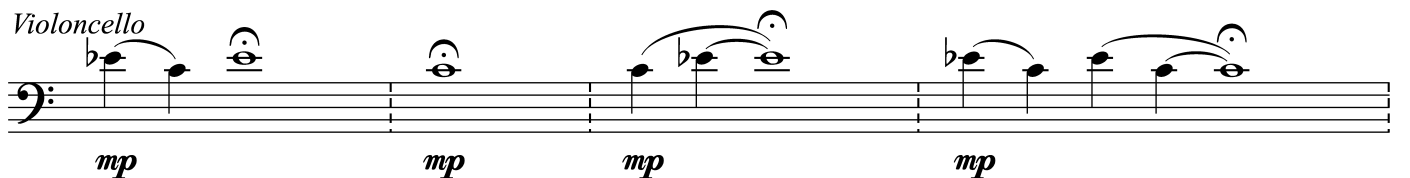


Violine

*beliebig viele Male wiederholen und aufhören;
danach diese Figur nicht mehr anfangen.*



Violoncello



SIGNAL 6-7
KLAVIER - CELLO

Musical score for Signal 6-7, Klavier - Cello. The piano part consists of two staves (treble and bass clef). The cello part is on a single bass clef staff. Dynamics include *p*, *mp*, and *pp*.

unabhängige Timing

Musical score for Signal 6-7, Klavier - Cello, continuing from the previous system. The piano part consists of two staves (treble and bass clef). The cello part is on a single bass clef staff. Dynamics include *p*, *mp*, and *mf*. There are triplets and a *rit.* marking.

BILD 8

Posaune

improvised phrase;
not too long;
communicate with guitar

mp

The musical notation for the trombone part consists of a single staff in bass clef. It begins with a whole rest, followed by a melodic phrase of four eighth notes: B-flat, B-flat, A, and G. This phrase is then held as a whole note. The dynamic marking *mp* is placed below the first note.

Gitarre

enter after trombone

improvised phrase;
not too long;
communicate with trombone

mf

The musical notation for the guitar part consists of a single staff in treble clef. It begins with a whole rest, followed by a melodic phrase of four eighth notes: B-flat, B-flat, A, and G. This phrase is then held as a whole note. The dynamic marking *mf* is placed below the first note.

Klavier

Rechts und Links beliebig kombinieren

p *p* *p* *p*

mp *mp* *mp* *mp*

The musical notation for the piano part consists of two staves. The right hand part features four measures of chords, each marked with a dynamic of *p*. The left hand part features four measures of eighth-note patterns, each marked with a dynamic of *mp*.

Violine

frei über den Takt zu spielen

p

The musical notation for the violin part consists of a single staff in treble clef. It features five measures of sustained notes: G, B-flat, A, G, and B-flat. The first measure is marked with a dynamic of *p*.

Violoncello

The musical notation for the cello part consists of a single staff in bass clef. It features five measures of sustained notes: G, B-flat, A, G, and B-flat.

SIGNAL 8-9
VIOLONCELLO

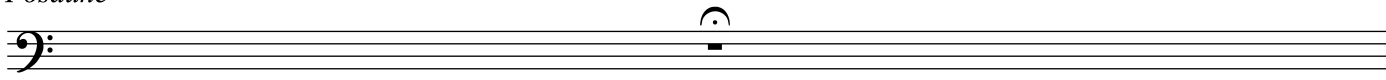
halten bis in Bild 9

p *f* *pp*

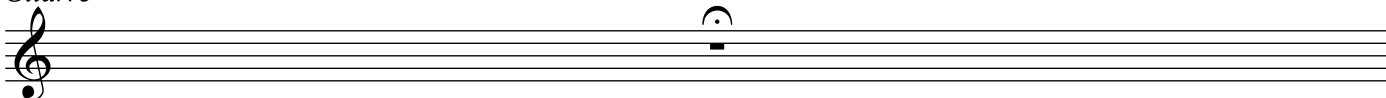
The musical notation for the cello part consists of a single staff in bass clef. It features five measures of sustained notes: G, B-flat, A, G, and B-flat. The first measure is marked with a dynamic of *p*, the second with *f*, and the fifth with *pp*.

BILD 9

Posaune



Gitarre



Klavier

häufig *wenig* *selten*

Three measures of piano music. The first measure is marked *p* and has the instruction *häufig* above it. The second measure is marked *p* and has the instruction *wenig* above it. The third measure is marked *p* and has the instruction *selten* above it. The bass line starts with *mf* and ends with *pp*.

frei über den Takt zu spielen

Violine

16
4

A musical staff in treble clef with a 16-measure rest in 4/4 time, followed by notes in the final measures. The first note is marked *p*.

Violoncello

Töne und Pause unabhängig verkürzen oder verlängern

A musical staff in treble clef with notes and a long fermata over the first two notes.

SIGNAL 9-10
KLAVIER

A musical score for piano with a melodic line in the treble clef and a bass line in the bass clef. The melodic line starts with *mf* and ends with *mf*.

BILD 10

Posaune *nur einmal*

Musical notation for Trombone (Posaune) in bass clef. It features a whole rest followed by a half note G2. A dynamic marking of *p* is placed below the staff with a hairpin indicating a crescendo and decrescendo.

Gitarre

Musical notation for Guitar in treble clef. It features a whole rest followed by a half note G2. A dynamic marking of *p* is placed below the staff with a hairpin indicating a crescendo and decrescendo.

Klavier *Rechts und Links beliebig kombinieren*

Musical notation for Piano (Klavier) in grand staff. The right hand plays chords in a 7/8 time signature, marked *pp*. The left hand plays a melodic line, marked *p*.

Violine *frei über den Takt zu spielen*
nur einmal

Musical notation for Violin in treble clef. It features a whole rest followed by a half note G2. A dynamic marking of *p* is placed below the staff with a hairpin indicating a crescendo and decrescendo.

Violoncello *nur einmal*

Musical notation for Violoncello in treble clef. It features a whole rest followed by a half note G2. A dynamic marking of *p* is placed below the staff with a hairpin indicating a crescendo and decrescendo.

SIGNAL 10-11
VIOLINE, KLAVIER

Musical notation for Violin and Piano (Klavier) in grand staff. The violin part features a half note G2 with a dynamic marking of *p*. The piano part features a melodic line in the right hand marked *mf* and a bass line in the left hand marked *mf*.

BILD 11

BILD 11
VIOLINE SOLO

The first staff of music contains a violin solo. It begins with a treble clef and a key signature of one sharp (F#). The melody starts with a half note G4 (F#), followed by a quarter note A4, and a quarter note B4. A slur covers the next two measures: a half note C5 (B) and a half note D5 (C#). The third measure has a quarter note E5 (D#) and a quarter note F#5. The fourth measure has a quarter note G#5 and a quarter note A5. The fifth measure has a quarter note B5 and a quarter note C6. The sixth measure has a quarter note D6 and a quarter note E6. The seventh measure has a quarter note F#6 and a quarter note G6. The eighth measure has a quarter note A6 and a quarter note B6. The ninth measure has a quarter note C7 and a quarter note D7. The tenth measure has a quarter note E7 and a quarter note F#7. The eleventh measure has a quarter note G7 and a quarter note A7. The twelfth measure has a quarter note B7 and a quarter note C8. The thirteenth measure has a quarter note D8 and a quarter note E8. The fourteenth measure has a quarter note F#8 and a quarter note G8. The fifteenth measure has a quarter note A8 and a quarter note B8. The sixteenth measure has a quarter note C9 and a quarter note D9. The seventeenth measure has a quarter note E9 and a quarter note F#9. The eighteenth measure has a quarter note G9 and a quarter note A9. The nineteenth measure has a quarter note B9 and a quarter note C10. The twentieth measure has a quarter note D10 and a quarter note E10. The dynamics are marked *mp* at the beginning and *mf* later in the staff.

SIGNAL 11-12

The second staff of music continues the violin solo. It begins with a treble clef and a key signature of one sharp (F#). The melody starts with a quarter note G4 (F#), followed by a quarter note A4, and a quarter note B4. The second measure has a quarter note C5 (B) and a quarter note D5 (C#). The third measure has a quarter note E5 (D#) and a quarter note F#5. The fourth measure has a quarter note G#5 and a quarter note A5. The fifth measure has a quarter note B5 and a quarter note C6. The sixth measure has a quarter note D6 and a quarter note E6. The seventh measure has a quarter note F#6 and a quarter note G6. The eighth measure has a quarter note A6 and a quarter note B6. The ninth measure has a quarter note C7 and a quarter note D7. The tenth measure has a quarter note E7 and a quarter note F#7. The eleventh measure has a quarter note G7 and a quarter note A7. The twelfth measure has a quarter note B7 and a quarter note C8. The thirteenth measure has a quarter note D8 and a quarter note E8. The fourteenth measure has a quarter note F#8 and a quarter note G8. The fifteenth measure has a quarter note A8 and a quarter note B8. The sixteenth measure has a quarter note C9 and a quarter note D9. The seventeenth measure has a quarter note E9 and a quarter note F#9. The eighteenth measure has a quarter note G9 and a quarter note A9. The nineteenth measure has a quarter note B9 and a quarter note C10. The twentieth measure has a quarter note D10 and a quarter note E10. The dynamics are marked *mp* at the beginning of the staff.

BILD 12

FADE OUT

♩=96

Posaune

Musical notation for Trombone (Posaune) in bass clef. The piece consists of three measures. The first measure has a half note G2 with a dynamic marking of *p*. The second measure has a half note G2 with a dynamic marking of *ppp*. The third measure has a half note G2 with a dynamic marking of *pp*.

Gitarre

Musical notation for Guitar (Gitarre) in treble clef. The piece consists of five measures. The first measure has a half note G2 with a dynamic marking of *mn* and a wavy line above it. The second measure has a half note G2 with a dynamic marking of *mn* and a glissando line above it. The third measure has a half note G2 with a dynamic marking of *mn* and a glissando line above it. The fourth measure has a triplet of eighth notes G2, A2, B2 with a dynamic marking of *mn* and a glissando line above it. The fifth measure has a half note G2 with a dynamic marking of *mn*.

Klavier

Musical notation for Piano (Klavier) in grand staff. The piece consists of three measures. The first measure has a dynamic marking of *mp* in the right hand and *f* in the left hand, with a crescendo line. The second measure has a dynamic marking of *pp* in the right hand and *p* in the left hand. The third measure has a dynamic marking of *pp* in the right hand and *mp* in the left hand.

Continuation of Piano (Klavier) notation in grand staff. The piece consists of two measures. The first measure has a dynamic marking of *pp* in the right hand and *mp* in the left hand. The second measure has a dynamic marking of *pp* in the right hand and *p* in the left hand, with a crescendo line leading to *f* and then *mp*.

Violine

Musical notation for Violin (Violine) in treble clef. The piece consists of five measures. The first measure has a dynamic marking of *mf*. The second measure has a dynamic marking of *p*. The third measure has a dynamic marking of *p*. The fourth measure has a dynamic marking of *mp*. The fifth measure has a dynamic marking of *mp*.

Violoncello

Musical notation for Cello (Violoncello) in bass clef. The piece consists of five measures. The first measure has a dynamic marking of *pp*. The second measure has a dynamic marking of *p*. The third measure has a dynamic marking of *mf*. The fourth measure has a dynamic marking of *p*. The fifth measure has a dynamic marking of *ppp*.