


AACHEN

Georg Friedrich Händel

16

- 1737 play  and *fairly quickly* travel to **London**.

ALTONA

Carl Reinecke

1

- 1824: play



C# D# E# F# G# A# B#

2

- 1843: play



and travel **Denmark** and **Sweden**,
arriving in **Leipzig** by **1844**.

ARCACHON

Carlos Salzedo

π

1

- 1885: play




and travel to **Bordeaux** by 1890.

C \flat D \flat E \flat F \sharp G \flat A \flat B \flat

AROLSEN

Ernst Eichner

1

- 1740: play  and travel to **Zweibrücken** by 1762.

C \sharp D \sharp E \sharp F \sharp G \sharp A \sharp B \sharp

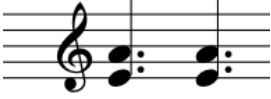
BALLYFARNON

Turlough O'Carolan

2

- 1684 play  until 1691.

3

- 1691 - 1720 play  while travelling from one end of Ireland to another, until you arrive in **Mohill** in **1720**.

- 1738 stop.

BAMBERG

E.T.A. Hoffmann

13

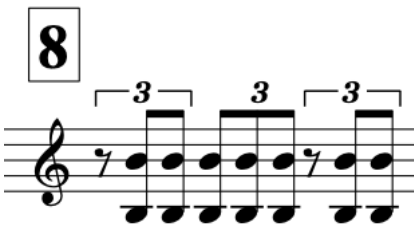
- 1808: play



and travel to **Dresden**
by 1813.

BARMEN

Carl Reinecke

- (coming from Cologne): play  and *quickly* travel to Breslau.

BARMEN

Carl Reinecke

8

- (coming from Cologne): play



and *quickly* travel to **Breslau**.

BARN ELMS

Georg Friedrich Händel


10

- 1713 play  and travel to **Cannons** by 1717.

BERLIN

Georg Friedrich Händel

2

- 1698 play  and travel to **Halle/Saale** by 1702.

E.T.A. Hoffmann

5

- 1798: play  and quickly travel to **Dresden**.

9

- coming from Poznań: play 

and travel to **Bamberg** by 1808.

- 1814: stop.

BORDEAUX

Carlos Salzedo

2

- 1890: play  and travel to **Paris** by **1895**.

BOULOGNE- SUR-MER

Félix Godefroid

2

- before 1832: play

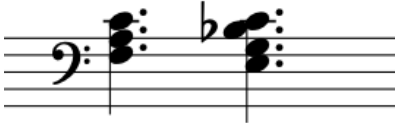


and travel to **Paris** by 1832.

BRAUNSCHWEIG

Louis Spohr

1

- 1784: play  and travel to **Seesen** by 1786.

C♯ D♯ E♯ F♯ G♯ A♯ B♭

BRESLAU

Carl Reinecke

9

- (coming from Barmen): play




and travel to
Leipzig by 1860.

BRUNSWICK- WOLFENBÜTTEL

Louis Spohr

5

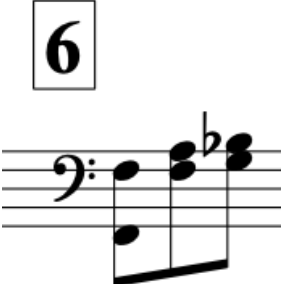
- 1799: play



Musical notation for the year 1799, featuring a treble clef, a key signature of one flat, and a melodic line with two triplet markings.

6

- 1802: play



Musical notation for the year 1802, featuring a bass clef and a chordal progression.

and *quickly* travel to **St Petersburg**.

BUCHAREST

Johann Dubez

- coming from Vienna: play

A musical score for a piano piece. It features a treble clef and a key signature of two flats (B-flat and E-flat). The melody is written on a five-line staff. Above the first few notes, there is a square box containing the number '2'. The melody consists of a series of eighth and sixteenth notes, some with accidentals (flats). The piece ends with a double bar line and a fermata over the final note.


2

and travel to **Constantinople** at some point **well before 1891**.

BUDENICE

Jean-Baptiste Krumpholz

1

- 1742: play  and travel to **Paris** before 1773.

C# D# E# F# G# A# Bb

CAMBRIDGE

Brian Boydell

6

- 1936: play  and travel to **London** by 1939.

CANNES

Henri O'Kelly

- 1938: stop.

CANNONS

Georg Friedrich Händel

11

- 1717 play  and travel to **Dresden** by 1719.

13

- coming from **Dresden**: play  and travel to **London** by 1723.

COLOGNE

Carl Reinecke

7

- 1851: play

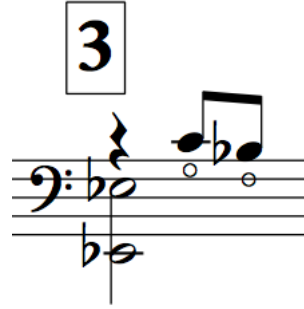


and *quickly* travel to **Barmen**.

CONSTANTINOPLÉ

Johann Dubez

- coming from Bucharest: play



and travel to Vienna by 1891.

COPENHAGEN


Carl Reinecke

- 1846: play  and travel to **Paris by 1848.**

DRESDEN


Georg Friedrich Händel

12

- 1719 play  and *quickly* travel back to **Cannons**.

E.T.A. Hoffmann

4

- coming from Silesia: play  and travel to **Berlin** by 1798.

6

- coming from Berlin: play  and quickly travel to **Poznań** by 1800.

14

- 1813: play  and **very quickly** travel to **Leipzig**.

16

- coming back from Leipzig: play  and **very quickly** travel back to **Leipzig**.

DUBLIN

Georg Friedrich Händel

18

faster

- 1741 play  and travel to **London**.

Brian Boydell

8

- 1942: play  and travel to **Howth by 1999**.

Gb

Peter K. Moran

1

- 1767: play  and travel to **USA by 1817**.

C# D# E# F# G# A# B#

DÜSSELDORF

Georg Friedrich Händel

8

- coming from Hanover: play  and *quickly* travel to **London.**

ERFURT

Louis Spohr

11

- 1812: play  and travel to **Vienna** by **1813**.

ESTERHAZY'S COURT

Jean Baptiste Krumpholz

4

- 1773: play



5

- 1776: play



and tour **Europe**. Arrive in **Paris** just before **1790**.

FLORENCE

Georg Friedrich Händel

5

- 1706 play  and travel *quickly* to **Rome**.

Elias Parish Alvars

5

- 1828: play  and travel to **Vienna** by 1836.

Mario Castelnuovo-Tedesco

- 1895: play

1


C♯ D♯ E♯ F♯ G♯ A♯ B♭

and travel to **Venice** by 1932.

FRANKFURT

Louis Spohr

14

- 1817: play



15


- 1820: play



and tour **England**, ending up in **Paris** in **1821**.

GLOGÓW

E.T.A. Hoffmann

- 1796: play  and very quickly travel to **Silesia**.

GOTHA

Louis Spohr

9

- 1805: play



and travel to **Vienna** by 1808.

HALLE/SAALE


Georg Friedrich Händel

1

- 1685 play  and travel to **Berlin** by 1698.

C4 D4 E4 F4 G4 A4 B4

3

- 1702 play  and travel to **Hamburg** by 1703.

HAMBURG

Georg Friedrich Händel

4

- 1703 play  and travel to **Florence** by 1706.

Louis Spohr

3

- 1799: play  and travel to **Seesen** also in 1799.

HANOVER

Georg Friedrich Händel

7

- 1710 play



and quickly travel to **Düsseldorf**.

HEIDELBERG

Brian Boydell


5

- 1935: play  and travel to **Cambridge** by 1936.

HOWTH

Brian Boydell

1

- 1917: play  and soon travel to **Shankhill**.

C \flat D \sharp E \flat F \sharp G \sharp A \flat B \flat

- 2000: stop.

KASSEL

Louis Spohr

17

- 1822: play



- 1859: stop.

KÖNIGSBERG

E.T.A. Hoffmann

- 1776: play  and travel to Glogów by 1796.

C \sharp D \sharp E \flat F \sharp G \sharp A \flat B \flat

LEIPZIG

Louis Spohr

8

- 1804: play  and travel to **Gotha** by 1805.

Carl Reinecke

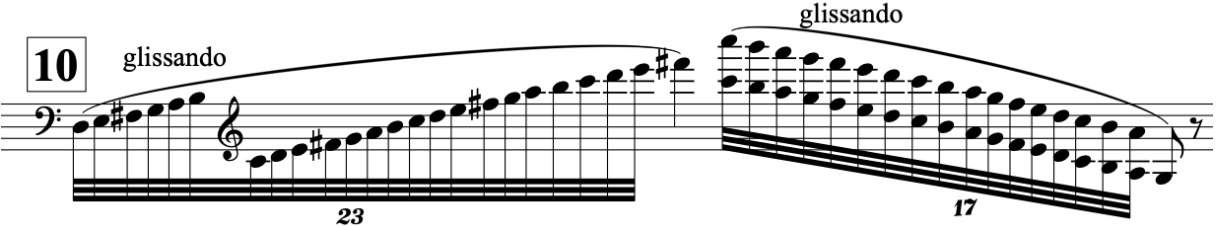
3

- 1844: play 


4

- 1845: play  and travel **North Germany** and **Denmark**, arriving in **Copenhagen** by 1846.

10

- 1860: play  glissando

11

- sometime between 1895 and 1909: play  and travel

to **England** and **elsewhere**, arriving back in **Leipzig** by 1910.

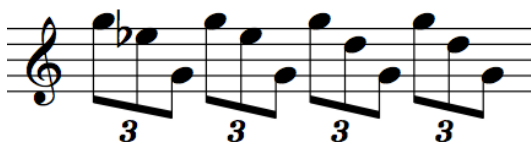
- 1910: stop.

LEIPZIG

E.T.A. Hoffmann

15

- coming from Dresden: play



and very quickly
travel to back to
Dresden.

8

- coming from Dresden again: play.



and travel to
Berlin by 1814.

LIÈGE

Alphonse Hasselmanns

- 1845 play  and at some point travel to arrive in **Strasbourg** shortly after **1854**.

C♯ D♯ E♭ F♯ G♯ A♭ B♭


LONDON

Georg Friedrich Händel

9

- coming from Düsseldorf: play  and travel to **Barn Elms** by 1713.

14

- 1723: play  and travel to **Italy** by 1729 and then back to **London**.

15

- coming back from Italy: play  and travel to **Aachen** by 1737.


17

- coming back from Aachen: play  and travel to **Dublin** by 1741.

19

- coming back from Dublin: play  and travel to **Germany**, then back to **London**

20

- coming back from Germany: play 
- 1759: stop.

LONDON

Elias Parish Alvars

3

- 1820: play

and travel to arrive in **Paris** at some point between **1820** and **1827**.

Charles Oberthür

- 1844: play

5



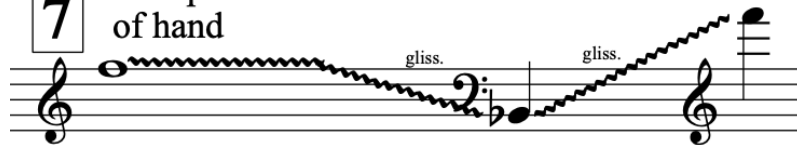
- 1895: stop

Brian Boydell

7


with palm
of hand

- 1939: play

and travel to **Dublin** by **1942**.

LONDON

Nicolas-Charles Bochsa

- 1817: play  3

The musical notation for the 1817 version of 'London' by Nicolas-Charles Bochsa is a single melodic line on a treble clef staff. It begins with a key signature of one flat (B-flat) and a common time signature. The melody consists of eight notes: B-flat, C, D, E, F, G, A, and B-flat. The notes are written as quarter notes, with a dotted quarter note for the final B-flat.

- 1839: play  4

The musical notation for the 1839 version of 'London' by Nicolas-Charles Bochsa is a single melodic line on a treble clef staff. It begins with a key signature of one flat (B-flat) and a common time signature. The melody consists of 16 notes: B-flat, C, D, E, F, G, A, B-flat, C, D, E, F, G, A, B-flat, and C. The notes are written as quarter notes, with a dotted quarter note for the final C.

and travel **North America and Europe** (not France), to arrive in **Naples** by 1853.

Marcel Grandjany

- 1922: play  2

The musical notation for the 1922 version of 'London' by Marcel Grandjany is a single melodic line on a treble clef staff. It begins with a key signature of two flats (B-flat and E-flat) and a common time signature. The melody consists of 10 notes: B-flat, C, D, E-flat, F, G, A, B-flat, C, and D. The notes are written as quarter notes, with a dotted quarter note for the final D.

and travel to **USA** by 1924.

Carlos Salzedo


- before 1930: play  17

The musical notation for Carlos Salzedo's version of 'London' is a single melodic line on a treble clef staff. It begins with a key signature of two sharps (F# and C#) and a common time signature. The melody consists of 17 notes: F#, G#, A, B, C, D, E, F#, G#, A, B, C, D, E, F#, and G#. The notes are written as quarter notes, with a dotted quarter note for the final G#. A '3' is written below the first three notes, and a '7' is written below the last seven notes, indicating triplet and septuplet rhythms.


and travel to **USA** also before 1930.

MANNHEIM

Charles Oberthür

- 1842: play  and travel to **London** by 1844.

Franz Lachner

- 1834: play  and travel to **Munich** by 1835.

MENTHON- SAINT- BERNARD

Carlos Salzedo

10

- 1914: play  and travel to Paris by 1915.

MOHILL

Turlough O'Carolan

4

- 1720 play



while travelling from one end of Ireland to another until you arrive in **Ballyfarnon** in **1738**.

MONTMÉDY

Nicolas-Charles Bochsa

- 1789: play 



and travel to **Paris** by **1807**.

MUNICH

Charles Oberthür

1

- 1819: play



and travel to **Zurich** by 1837.

C# D# Eb F# G# A# Bb

Franz Lachner

- 1835: stop.

NAMUR

Félix Godefroid

1

- 1818: play



and travel to **Boulogne-sur-Mer**
well before 1832.

C \sharp D \sharp E \sharp F \sharp G \sharp A \sharp B \sharp

NAPLES

Nicolas-Charles Bochsa

5

- 1853: play




and travel to **Sydney**
(outside) by **1855**.

NOBBER

Turlough O'Carolan

1

- 1670 play  and travel to **Ballyfarnon** by 1684.

C \sharp D \sharp E \sharp F \sharp G \sharp A \sharp B \sharp

OXFORD

Brian Boydell


3

- coming from Shankhill: play  and travel to arrive in **Rugby before 1934.**

PARIS

Jean Baptiste Krumpholz

2

- 1773: play  and travel to **Vienna** also in 1773.

- 1790: stop.

Louis Spohr

16

- 1821: play  and travel to **Kassel** by 1822.

Théodore Labarre

1

- 1805: play 

C_b D_b E_b F[#] G_b A_b B_b

2

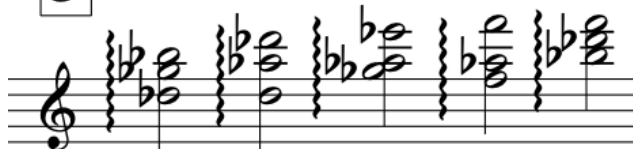
- 1823: play  and travel to **England, Ireland**, then **Switzerland** and **Italy**, arriving back in Paris by 1831.

PARIS

Théodore Labarre (continued)

3

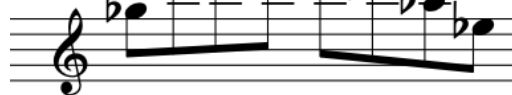
- 1831-1869: play



when in Paris.

4

However, often travel to **England** playing



- 1870: stop.

Elias Parish Alvars

4

- at some point between 1820 and 1827: play
and travel to **Florence** by 1828.



Carl Reinecke

6

- 1848: play



and travel to **Cologne** by 1851.

Alphonse Hasselmanns

4


- before 1884: play



- 1912: stop.

PARIS


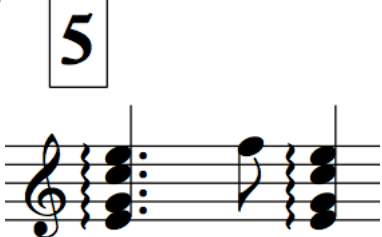

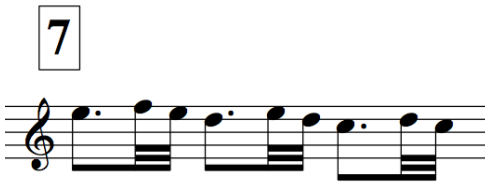
Nicolas-Charles Bochsa

- 1807: play  and travel to **London** by 1817.

Jean-Yves Daniel-Lesur

- 1908: play **MARINE** repeatedly at your own speed
- 2002: stop.

Félix Godefroid

- 1832: play 
- 1839-1846: play  while travelling through **Europe** **Levant** arriving back in **Paris** by **1847**.
- 1847: play  then  and travel through Europe. Arrive in **Villers-sur-Mer** by 1897.

PARIS

Marcel Grandjany

1

- 1891: play

and travel to **London** by 1922.

C4 D4 Eb F4 G4 Ab Bb

François-Joseph Naderman

1

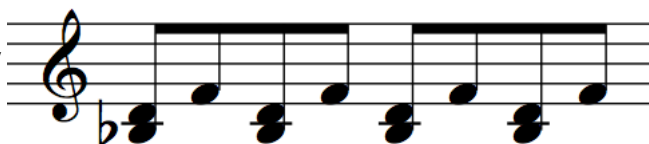
- 1781: play



C4 D4 Eb F4 G4 Ab Bb

2

- 1825: play

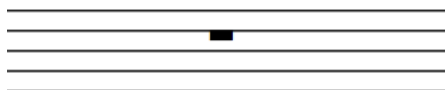
while touring **Europe**,
arriving back in **Paris**
by 1835.

- 1835: stop.

Henri O'Kelly

1

- 1859: play

and travel to **Cannes** by 1938.

C4 D4 Eb F4 G4 Ab Bb

PARIS

Marcel Tournier

1

- 1879: play  and travel to Rome by 1909.

C# D# Eb F# G# Ab Bb

- 1951: stop.

Carlos Salzedo

3

- 1895: play 

4

- 1902: play 

and tour Europe. Return to Paris by 1903.


5

- 1903: play  and tour Europe. Return to Paris in the same year.

PARIS

Carlos Salzedo (continued)

6

- 1904: play  and travel to **USA** by 1909.

13

- 1915: play 

14

- 1916: play  and very quickly travel to **USA**.

PLOCK

E.T.A. Hoffmann

10

- 1802: play  and travel to **Warsaw** by 1804.

POTSDAM

Ernst Eichner

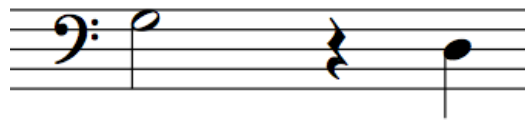
- 1777: stop.

POZNAN

E.T.A. Hoffmann

7

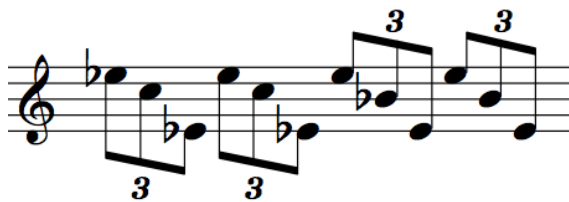
- 1800: play



and travel through **Greater Poland** and **Masovia** to arrive in **Plock** by 1802.

12

- 1807: play



and quickly travel to **Berlin**.

RAIN AM LECH

Franz Lachner

1

- 1803: play




C# D# E# F# G# A# Bb

and travel to arrive in **Vienna**
at some point between
1803 and **1834**.

ROME

Georg Friedrich Händel

6

- play  and travel to **Hanover** by **1710**.

Marcel Tournier

2

- **1909**: play  and travel to **Paris** by **1951**.

RUGBY

Brian Boydell

4

- before 1934: play  and travel to **Heidelberg** by 1935.

SEESEN

Louis Spohr

2

- 1786: play



and travel to **Hamburg** by 1799.

4

- 1799: play



and travel to **Brunswick-Wolfenbüttel** also in 1799.

SHANKHILL

Brian Boydell

2

- coming from Howth: play  and soon travel to **Oxford.**

SIDNEY (OUTSIDE)

Nicolas-Charles Bochsa

- 1855: play

6

- 1856: stop.

SILESIA

E.T.A. Hoffmann

3

- coming from Glogów: play

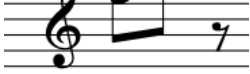


and very quickly
travel to
Dresden.

ST PETERSBURG

Louis Spohr

7

- play  and instantly tour **North Germany**, ending up in **Leipzig** by **1804**.

STRASBOURG


Alphonse Hasselmanns

2

- after 1854: play  and at
some point travel to **Stuttgart** (before 1880).

STUTTGART

Alphonse Hasselmanns

- coming from Strasbourg: play  and travel to Paris before 1884.

The musical notation shows a triplet of three chords in G minor. The first chord is a G minor triad (G2, Bb2, D3), the second is a G minor triad (G2, Bb2, D3), and the third is a G minor triad (G2, Bb2, D3). The notes are written on a treble clef staff with a key signature of one flat (Bb).

TEIGNMOUTH

Elias Parish Alvars

1

- 1808: play  and travel to **Totnes** by 1818.

C4 D4 E4 F4 G4 A4 B4

TOTNES

Elias Parish Alvars

2

- 1818: play  and travel to **London** by 1820.

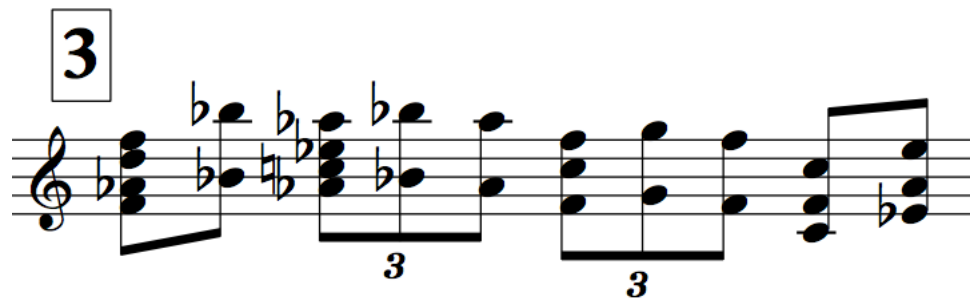
USA(OUTSIDE)

Mario Castelnuovo-Tedesco

- 1939-67 play  and visit Italy frequently between 1946 und 1967. making sure to be in the USA by 1967.

- 1968: stop.

Marcel Grandjany

- 1924: play: 

and/or

- 1975: stop 

Peter K. Moran

- 1817: play 

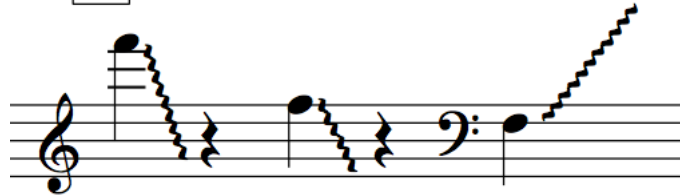
- 1831: stop.

USA(OUTSIDE)

Carlos Salzedo

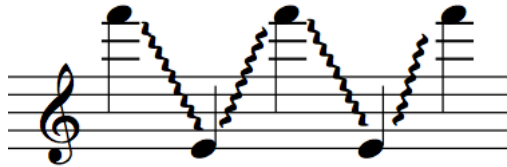
7

- 1909 play



8

- 1913: play



and travel through the **chateau country of France**, the **USA** and **England**, arriving back in **USA** by 1914.

9

- 1914: play



and quickly travel to **Menthon-Saint-Bernard**.

C# D# E# F# G# A# B#

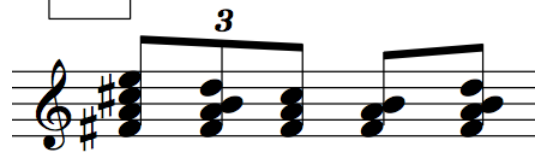
14

- 1916: play



and/or

15



16

- 1925: play

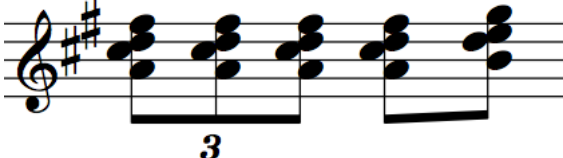


and travel through **France** to end up in **London** before 1930.

USA(OUTSIDE)

Carlos Salzedo (continued)

19

- 1930 play  , quickly travel to **France** and back to **USA** before **1932**.

20


- 1932: play 

21

- 1959: play  and travel to **France** and **Israel**, to arrive back in the **USA** before **1961**.
- 1961: stop.

VENICE

Mario Castelnuovo-Tedesco

- 1932: play  and travel to the **USA** by 1939.

VIENNA

Jean Baptiste Krumpholz

3

- 1773: play



and travel to **Esterhazy's Court** also in **1773**.

Louis Spohr

10

- 1808: play



and travel to **Erfurt** by **1812**.

12

- 1813: play



13

- 1816: play



and tour **Italy**, ending up in **Frankfurt** in **1817**.

VIENNA

Elias Parish Alvars

6

- 1836: play



7

- 1838: play



and travel the **Near East**, arriving back in **Vienna** by 1842.

8

- 1842: play

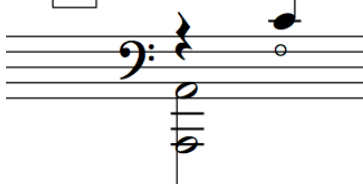


- 1849: stop.

Johann Dubez

1

- 1828: play



and travel to **Bucharest** at some point well before 1891.

C# D# E# F# G# A# B#

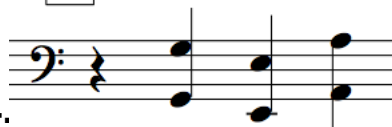
- 1891: stop.

VIENNA

Franz Lachner

2

- at some point between 1803 and 1834: play
and travel to Mannheim by 1834.



Johann Baptist Schenk

- 1773: play

2



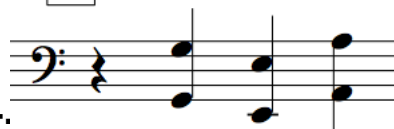
- 1836: stop

VIENNA

Franz Lachner

2

- at some point between 1803 and 1834: play
and travel to Mannheim by 1834.



Johann Baptist Schenk

- 1773: play

2



- 1836: stop

VILLERS-SUR- MER

Félix Godefroid

- 1897: stop.

WARSAW

E.T.A. Hoffmann


11

- 1804: play  and travel to Poznań by 1807.

WIENER NEUSTADT

Johann Baptist Schenk

1

- 1753: play  and travel to **Vienna**
by 1773.

C# D# Eb F# G# Ab Bb

WIESBADEN

Charles Oberthür

- 1839: play  and travel to **Mannheim** by 1842.

The musical notation shows a triplet of eighth notes on a treble clef staff. The notes are G4, A4, and B4, all beamed together. A box with the number '3' is positioned above the first note. The key signature has one flat (Bb), and the time signature is not explicitly shown but implied by the triplet notation.

ZURICH

Charles Oberthür

2

- 1837: play  and travel to **Wiesbaden**
by 1839.

ZWEIBRÜCKEN

Ernst Eichner

2

- 1762: play  and travel to **Potsdam**
by 1777.