

**Public Computer Centers Broadband Infrastructure Sustainable Broadband Adoption**

CONNECT EXISTING AND DARK FIBER TO BUILD CHICAGO'S **BACKBONE**

Open Network  
Wholesale and Retail  
Symmetrical Services  
"Infinite" Bandwidth

South Side Health and Vitality Studies

University of Chicago Medical Center

**HEALTH**

**COALITION**

RESPONDS TO  
NEED BY BUILDING  
CAPACITY

19 network POPs  
1500 connection points  
**middle mile + last mile**



**Fiber to the Premise Pilot**  
1,500 small businesses  
10,000 underserved households  
10,000 Chicago Housing Authority units  
Industrial, Empowerment and Illinois Enterprise Zones  
Renewal Communities  
two communities

**A NEW FIBER SERVICE PROVIDER**

ComEd's Smart Grid initiative

**Smart Communities**  
267,000 population  
Auburn Gresham, Pilsen, Chicago Lawn, Englewood

**GRASSROOTS**

OVERCOME LACK OF INTEREST  
DIFFICULTY OF USE  
**EDUCATION**

training and workshops to 5,456 potential broadband subscribers

neighborhood web portals that reach 200,000

11 non-profits  
90 small businesses

5,704 people served at FamilyNet Centers

11,386 households as new broadband subscribers

**MINDSETS**

trusted connections

5 local lead agencies

5 neighborhoods

Community Organizers  
LISC

City Colleges of Chicago (CCC)  
Department of Family and Support Services (DFFS) Sites  
WorkNet Chicago Workforce Centers  
Chicago Housing Authority (CHA) centers  
Chicago Public Libraries  
YOUmedia, CyberNavigators, Teacher in the Library

**Smart Hubs:**  
Add and/or Upgrade Public Computing Capacity at 136 Community-based Sites

Public Safety  
CLEARpath, disaster readiness, monitoring  
Transportation  
fleet control, traffic control  
Energy and Environment (with Argonne + ComEd)  
consumer education, smart metering  
Health Care (with UofC+ others)  
health record availability, inter-institutional communication, triage  
Community and Economic Development (with CCT)  
integrate special populations, job creation, training, industry support  
Education and Learning (with ASM + others)  
media literacy, inter-institutional communication

6 Working Groups  
City + Sister Agencies

497 community anchor institutions connected  
library branches, schools, City College of Chicago facilities, museums, community health centers, hospitals, Chicago Housing Authority developments, parks, public works facilities, fire houses, court houses and detention centers. Additionally, police stations are immediately adjacent to fiber network nodes. Cook County public safety wireless towers will be connected.

Many Census Blocks have broadband subscribership levels of 40% or less

A significant number of Census Blocks will be passed with thousands of businesses

Contractor - Public Building Commission

Technology Consultants

**SmartChicago Communications (SCC)**

(mature phase management)

City Dept. of Innovation and Technology (DoIT)  
(incubation phase management)

**SmartChicago Project**

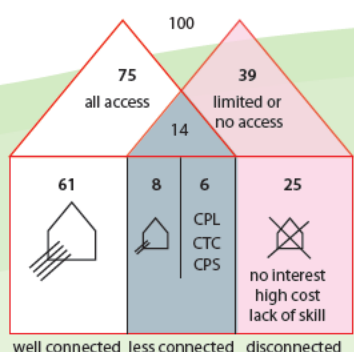
not affordable

no access

lack of interest

barriers to internet access are identified for Chicagoans

**DIGITAL DIVIDE**



older, Latino, African American, low-income, less educated

Survey and Report: "Digital Excellence in Chicago: A City-Wide View," University of Illinois, University of Iowa (2008)

MacArthur Foundation

Mayor's Council on Closing the Digital Divide (2006)  
Report: "The City That Networks: Transforming Society and Economy Through Digital Excellence." (2007)

Challenges to citywide wireless business model (2005)

Broadband services from existing providers unaffordable for many residents

**BTOP applications**

Other grants and programs leveraged:  
Workforce Investment Act (WIA)  
Neighborhood Stabilization Program #1  
Neighborhood Stabilization Program #2  
Public Housing Capital program  
+ many more

**SMART CHICAGO TRUST FUND**

SmartChicago Symposium  
7/22/09

Corporate Sector  
+  
Working Group Participants  
Community Organizers  
University Researchers  
Consultants

Future Applications

**Key Partners**  
MacArthur Foundation  
University of Chicago Medical Center  
Chicago Community Trust  
Argonne National Laboratory  
Illinois Department of Commerce and Economic Opportunity  
LISC/Chicago  
New Communities Program  
After School Matters

**SSC founding partners**  
City of Chicago  
Chicago Public Schools  
Chicago Housing Authority  
Chicago Public Libraries  
Chicago Park District  
Chicago Transit Authority  
City Colleges of Chicago  
University of Chicago Medical Center  
Cook County

**expected outcomes**

15,616 direct jobs  
70,215 indirect jobs  
in construction, IT/networking and customer service

**SmartChicago**

**evaluation of outcomes**

Efforts to Outcomes (ETO)

Subscriber growth  
Web portals (Google Analytics)  
Marketing exposure  
Increase in broadband services

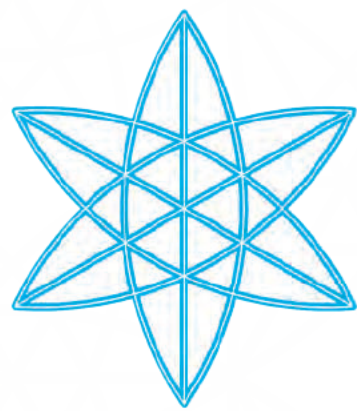


# Working as an **embedded artist** with full access to meetings, information and materials, with the **Department of Innovation and Technology (DoIT)** City of Chicago

## Digital Excellence Initiative and SmartChicago Recovery Act Proposal

November 2008 - August 2009

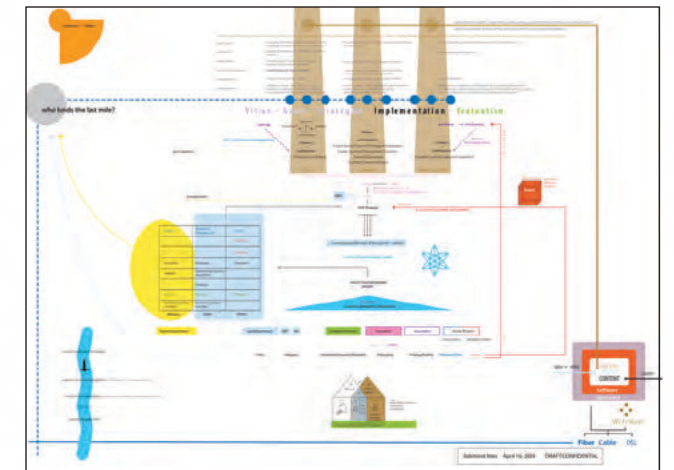
Community meeting with Local Initiatives Support Corporation (LISC) and TESKA, a community planning firm, hosted by the West Side Tech Community College, March 2009



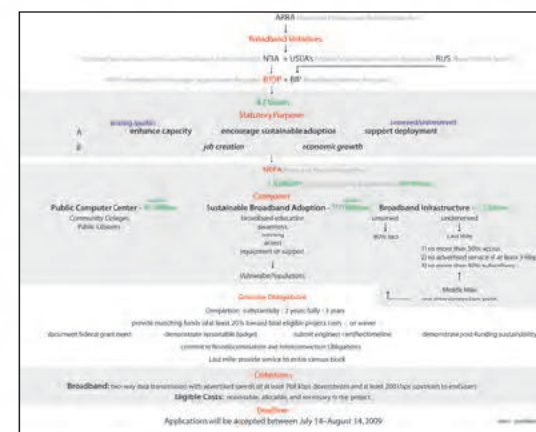
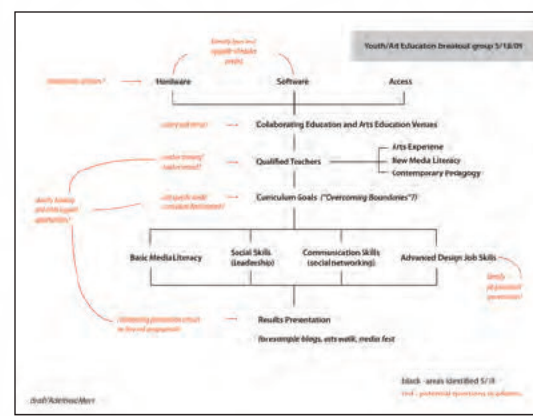
Pantone Process Cyan



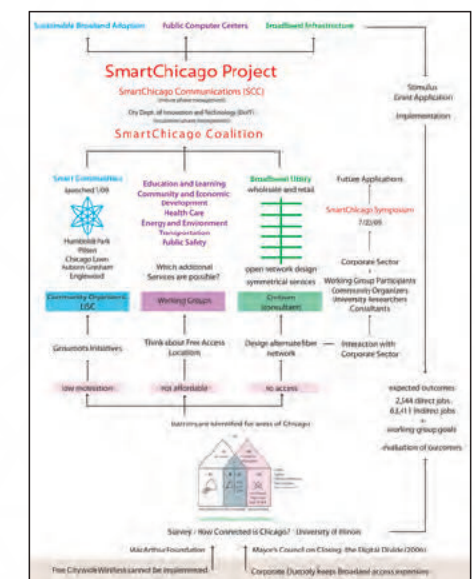
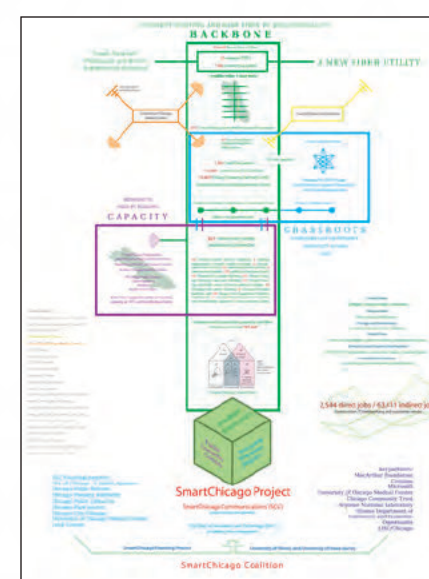
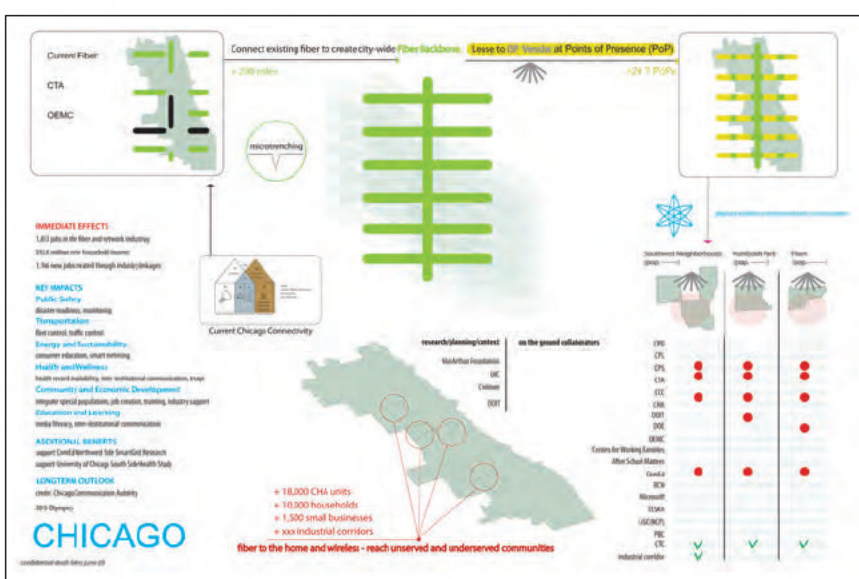
Matthew Guilford and Danielle DuMerer, DoIT



My role as an embedded artist asks that I react to the work processes I encounter in ways that are prompted by my practice. Initially, I surveyed academic literature on the digital divide and on digital cultural policy. I then read the specific studies that support the current work of DoIT, a city wide connectivity survey conducted by UIC, and a MacArthur funded/City commissioned report, "The City that Networks: Transforming Society and Economy through Digital Excellence." As I came on, a Smart Communities program intended to increase digital access in underserved neighborhoods was being prepared for launch, through community organizing, inter-agency collaboration, work with corporate donors and a technology consulting group.

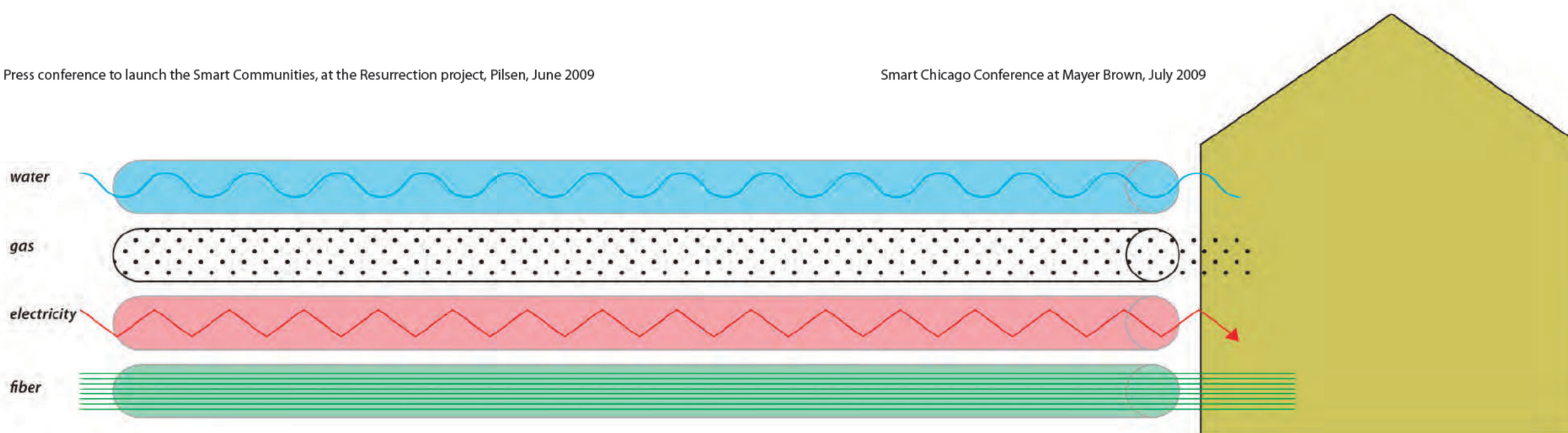


As a warm-up, I designed the project logo and created a visual summary, to be included in the press materials. Participating in weekly meetings with stakeholders, in phone conferences and in meetings ranging from 8 to 100 participants across the board, a series of diagrams for internal use arose that accompanied the processes: conference concepts, breakout group feedback, and diagrams tracking negotiations across participant groups over several weeks. When the BTOP stimulus grant was announced, I shadowed the six working groups and further kept up by email as the grant language was hammered out, providing an additional, visual feedback loop for that intense process. The visual summary of the application on the reverse is the formal culmination of the project, included in the application as part of the submitted materials.



Press conference to launch the Smart Communities, at the Resurrection project, Pilsen, June 2009

Smart Chicago Conference at Mayer Brown, July 2009



DoIT has responded with great enthusiasm to this experiment and expressed a strong interest in continuing the relationship with artists - myself and others. On my end, to witness large scale public policy negotiation and some of its implementation has been greatly enlightening. I am pleased to have been able to bring an extended arts conversation to the table, and to come away with a refined set of critical questions.