

AUTOHOODENING:

**THE RISE OF
CAPTAIN SWING**

Songbook

Music:

Daniel Blanco Albert

Text:

Post Workers Theatre
Roxanne Korda

A Post Workers Theatre and Infinite Opera project

The workers...

Lead Picker

Lead Packer

Chorus (of Pickers and Packers)

Folk Ensemble (of Pickers and Packers)

Line Manager

The machines...

Alexis the Scanner

Molly Bot

The hero...

Captain Swing

AUTOHOODENING: THE RISE OF CAPTAIN SWING

Songbook

1 - Introductory Song

1 - Ensemble - **Amazon Tune**

2 - Narration (Bug)

*Welcome to this seasonal shopping reflection
A tale of love & loss and of worker oppression
Here we see the real-deals of our corporate reality
And the true struggle of employment precarity*

*For too long now these 2 bots have been hard wired
For the lust of profit, so many are fired
Through the pandemic these folk work tirelessly
Cogs in the wheel of our inhuman modernity*

*Here our pickers have no wintertime cheer
But please watch this play, get enlightened
and donate us some beer!*

3 - Ensemble - **Autohoodening Reel**

4 - Introduction - **Lead Picker** and **Lead Packer** (spoken)

Chorus (sottovoce): **Pick Pack Motif #1** and **Folk Song**

Pick Pack Motif #1

Fast (♩ = 100)
mp

Chorus

Pick pack pick pack

(only during narration)

(repeat until the next section begins)

Folk Song (only during narration)

Freely (unmeasured)
p

Voice

We are not trea-ted as hu-mans. We are not
e-ven trea-ted as ro-bots. We are trea-ted as part of the
da-ta stream not trea-ted as hu-mans

5 - Ensemble - *Autohoodening Reel*6 - Introduction - **Line Manager** (spoken)Chorus (sottovoce): *Pick Pack Motif #1 & Folk Song*7 - Chorus: *Pick Pack Motif #2* (background)*Poor Old Associate #1***Pick Pack Motif #2**

Fast (♩ = 100)
mp

Chorus

Pick pack pick pack

(under Poor Old Associate #1)

(repeat until the next section begins)

Poor Old Associate #1 (Chorus onstage)**With conviction** (♩ = 100)

Chorus

We are not trea-ted as hu - mans we are not e-ven treated as ro - bots, we

are trea-ted as part of the da - ta___ stream. We are not trea - ted___ as hu - mans.

8 - Ensemble - *Autohoodening Reel*9 - Introduction - **Molly Bot** (spoken)Chorus (sottovoce): *Pick Pack Motif #1 & Folk Song*10 - Ensemble - *Autohoodening Reel*11 - Narration - **Alexis the Scanner** (spoken)Chorus (sottovoce): *Pick Pack Motif #1 & Folk Song*12 - Ensemble - *Autohoodening Reel*13 - Chorus - *Poor Old Associate #1b*Background singing: *Pick Pack Motif #2***Poor Old Associate #1b****Without conviction** (♩ = 100)

Chorus

We are not trea-ted as hu - mans, we are not e-ven treated as ro - bots, we

are trea-ted as part of the da - ta___ stream. We are not trea - ted___ as hu - mans.

14 - Everybody: *Pick Pack Motif #1* - fades out slowly

2 - Corporate Duet

- 1 - Electronic music (factory beeps)
- 2 - Chorus: *Depressed Pick Pack Motif*

Depressed Pick Pack Motif

Chorus

Slow ♩ = 60
moaning

(until 3.5)

Piick Paack Piick Paack Piick Paack Piick Paack

- 3 - Chorus (basses) *Depressed "Workers treated as robots" Bass*

Depressed "Workers treated as robots" Bass

Chorus (Basses)

Slow ♩ = 60
moaning

(until the end of this number)

Wor-kers trea-ted as slave ro-bots, no res-pect, no rights

- 4 - Ensemble: *Love Brass Chords* + hints of *Poor Old Associate #1*
- 5 - Dialogue - **Molly Bot** and **Alexis the Scanner** (spoken)
- 6 - **Love Duet** : **Alexis the Scanner** sings, **Molly Bot** responds to Alexis in a robotic manner

Alexis the Scanner

Slow, loving and caring ♩ = 60

Our love is like cus - to-mer sa - tis-fac - tion
Our love is like a win - ning trans - ac - tion
Our love is like in - no - va - ting new so - lu - tions
Our love is like world - like dis - tri - bu - tions
Our love is like being more cost ef - fec - tive
Our love is like a cor - po-rate ob - jec-tive

- 7 - **Alexis the Scanner** and **Molly Bot** dance. The **Lead Picker** gets injured
- 8 - *Depressed "Workers treated as robots" Bass* fades out, finishing the scene

3 - Corporate Strength and 1st Punishment

1 - *Depressed Pick Pack Motif* continues from the previous number

2 - **Lead Picker**: operatic dramatic singing

Painfully dramatic ♩ = 60

f *fff*

Lead Picker

Poor Old Associate #2

With a growing conviction (♩ = 100)

Chorus

We are not trea-ted as hu - mans, we are not e-ven treated as ro - bots, we are trea-ted as part of the da - ta___ stream. We are not trea - ted___ as hu - mans. They called us all as-so-ci-ates as - so - ci - ates. They called us all as-so-ci-ates, as - so - ci - ates. A name-less___ wor - ker with - out a___ face. Not e - ven of - fered a res - ting space

4 - Pain Aria

1 - Ensemble: Sad, slow **Amazon tune**

2 - **Lead Picker**: 1st verse of the aria

Ensemble: Slow **Amazon tune** and **Pain Aria Bass Line**

Slow ♩ = 60

Lead Picker

I've___ been gi - ven___ a___ first___ war - ning, A - no - ther two___ and___ I'll___ lose___ my___ job.___ I'm___ too scared___ to___ com - plain. or___ to___ ask for___ time___ off.___

3 - Chorus (Basses): "**Swing**" **Bass Motif #1** (softly in the background)

"Swing" Bass Motif #1

Chorus

Slow ♩ = 60

Swing, Swing Swing, Swing

5 - Captain Swing's Introduction

1 - Chorus: *"Swing" Pick Pack Motif* (first). Then, Basses: *"Swing" Bass Motif #3*

"Swing" Pick Pack Motif

Bright! (♩ = 100)
mp

Chorus

Swing, Swing, Swing, Swing, Swing, Swing, Swing, Swing,

(until Captain Swing finishes speaking in this scene)

"Swing" Bass Motif #3

Bright! (♩ = 100)
mp

Chorus
(Basses)

Swing, Swing, Swing, Swing

(until Captain Swing finishes speaking in this scene)

2 - **Captain Swing** sings and speaks over the chorus' background

Freely (♩ = 100)

2.1 - Sung:

Captain
Swing

In comes I, Cap-tain Swing, when I hear wor-ker's pain I sing.

2.2 - Spoken:

*Forged through histories rebellion
Now armed and ready I rise again*

2.3 - Sung:

Captain
Swing

With cir-cui-try and soft-ware, I can re-pro-gramme their hard-ware.

2.4 - Spoken:

*Rip down this corporate nonsense
To reinstate a conscience*

2.5 - Sung:

Captain
Swing

Tell to me your e-verywoe, through your trou-bles my strenght shall grow.

2.6 - **Captain Swing** speaks

After "And shall make sure these "Molly"s hear": Chorus attacca

1 - Chorus: ***Fight Back Motif*** (first). Then, Basses: ***"Swing Fight Back" Bass Motif***

Freely (slightly unmeasured)

Captain
Swing

Your long for - got - ten ca - sual - ties the fall - out of

Prime's _____ days _____ of pa - gean - try.

4 - Ensemble fades out when **Molly Bot** speaks. Chorus singing continues

5 - Battle. As **Captain Swing** loses, the singing becomes sadder and slower

6 - **Chorus of Pickers and Packers** (after the defeat of Captain Swing): Boooo!!

7 - Ensemble: Fast **Amazon Tune**

8 - **Molly Bot** and **Alexis the Scanner** sing a short love duet, speaking in between

8.1 - **Molly Bot** and **Alexis the Scanner** sing:



Alexis the Scanner: Our love is like...__

Molly Bot: Would you like?__

8.2 - **Molly Bot** and **Alexis the Scanner** speak:

Alexis the Scanner: a never-ending growing.

Molly Bot: I've got one of those.

8.3 - **Molly Bot** and **Alexis the Scanner** sing:



Our love is like__

8.4 - Duet speak:

Alexis: limitless growth.

Molly: watch how your basket grows.

8.5 - Duet of physical comedy. The ensemble plays the **Amazon Tune**

8.6 - Chorus (gradually): **Depressed Pick Pack Motif**

Slow ♩ = 60
moaning

Chorus

9 - Chorus: **Poor Old Associate #3**

Poor Old Associate #3

Slow ♩ = 60

Chorus

We are not trea-ted as hu - mans, we are not e-ven treated as ro - bots, we

are trea-ted as part of the da - ta__ stream. We are not trea - ted__ as hu - mans. They

called us all as-so-ci-ates as - so - ci - ates. They called us all as-so-ci-ates, as - so - ci - ates. A

name-less___ wor-ker with - out a___ face. Not e - ven of - fered a res-ting space Sore

feet, back, hands___ my head aches. Scores of sad peo-ple on e - very break

Stress-ful___ not help - ful___ hard work___ Sore feet, back, hands___ my head aches.

7 - The Algorithm

1 - **Alexis the Scanner** speaks

2 - Factory sounds

3 - **Alexis the Scanner** and **Molly Bot** sing a short duet that triggers the algorithm

Creepily happy ♩ = 60

Alexis the
Scanner:
Molly Bot:

We have an e - vol - ving know - ledge of how you work.

We have an e - vol - ving know - ledge of how you work.

5 - **Alexis the Scanner** snaps to the members of the Ensemble and of the **Chorus of Pickers and Packers**. They start playing and singing lines from the algorithm. Once all the performers are controlled by the algorithm, **Alexis the Scanner** and **Molly Bot** join them by singing the algorithm lines

1

Time off task is e - qual to ze-ro Time off task is e - qual to ze-ro

2

Find cost - cut - ting so - lu - tion

3

De - fine tar - get struc - ture

4

Ti - red-ness is e - qual to ze - ro Ti - red-ness is e - qual to ze - ro

5

Re - peat un - til fear Re peat un - til fear Con - di - tion is met

6

Ge - ne - rate neigh - bour - hood sets of x Ge - ne - rate neigh - bour - hood sets of x

7

S one to ex - tract

8

Se - lect the best sur - veil-lance so - lu-tion not X from S one or S two or S con-trol

9

If as-so - ciate is les - ser than the best six-ty per cent ef - fi-cien-cy
then pu - nish - ment is man - da to ry

10

Else ef - fi - cien - cy must be e - qual to ef - fi - cien - cy plus one

11

If strike count is grea - ter than thres - hold dis - ci - pli - na - ry e-poch

12

Up - date as - so - ciate by cal - ling A - dec - co Pro - gram - ming

13

As-so-ciate as-signed to not as-so-ciate As-so-ciate as-signed to not as-so-ciate

14

Loo time is e - equal to ze - ro Loo time is e - equal to ze - ro

- 6 - **Alexis the Scanner**, one by one, mutes everybody with a snap
 7 - **Molly Bot** and **Alexis the Scanner** sing a closing duet for the algorithm

Creepily happy ♩ = 60

Alexis the Scanner:
Molly Bot:

We have an e - vol - ving know - ledge of what you do.

8 - The 2nd Punishment

- 1 - **Line Manager** delivers a punishment monologue
 2 - Ensemble: **Amazon tune** (slowly)
 Chorus: **Pick Pack Motif #2** (slowly)
 3 - **Alexis the Scanner** punishes pickers and packers by snapping at them
 Each snap will make them perform faster

Fast! (♩ = 100)
mp

Chorus

Pick, pack, pick, pack, pick, pack, pick, pack,

(at every snap by **Alexis the Scanner**, increase the speed of performance)

- 5 - **Line Manager** sings using the **Amazon Tune**
Alexis the Scanner sings using the **Scanner Motif**

With conviction
robotic

Line Manager

Your rates are down low produc - ti - vi - ty. Work hard, have fun. Make his - to - ry

Alexis the Scanner

Pick, quick. Pack, pack. Fill up the sack!

- 6 - The snapping from **Alexis the Scanner** intensifies, increasing the performance speed of of the whole team. This continues until everybody falls in exhaustion

9 - Captain Swing's Coronation Ritual

1 - Harmony rises to D

Ensemble: *Amazon Tune revolted* and *Poor Old Associate*

2 - Chorus (Basses): "*Swing*" Bass Motif #4 (In D)

"Swing" Bass Motif #4

Brave! (♩ = 100)

Chorus (Basses)

f

Swing, Swing, Swing

(until the end of this number)

3 - Chorus: *Old Poor Associate* (full song)

Brave! (♩ = 100)

Chorus

f

We are not trea-ted as hu - mans, we are not e-ventreated as ro - bots, we

are trea-ted as part of the da - ta___ stream. We are not trea - ted___ as hu - mans. They

called us all as-so-ci-ates as - so - ci - ates. They called us all as-so-ci-ates, as - so - ci - ates. A

name-less___ wor-ker with - out a___ face. Not e - ven of - fered a res-ting space. Sore

feet, back, hands___ my head aches. Scores of sad peo-ple on e - very break

Stress-ful not help - ful___ hard work___ Sore feet, back, hands___ my head aches. A -

lone locked in___ a me - tal cage ca-me-ras watch how I be - have. My

bo - dy___ screa - ming stop, stop, stop. A - lone locked in___ a me - tal cage.

3 - Complaints reading section:

3.1 - The four main complaints are read

3.2 - Ritual of complaints: everybody reads different complaints building a cacophony texture

3.3 - After a climax of noise, created by an avalanche of complaints, **Captain Swing** resurrects

3.4 - The singing continues while **Captain Swing** is coronated

10 - The 3rd Punishment

1 - Sung introduction by **Alexis the Scanner** (no accompaniment)

Freely (unmeasured)

Alexis the Scanner

Oh no! Oh no! Swing has ___ ri-sen what next?

2 - Chorus: *"Swing" has risen Motif*

"Swing" has risen Motif

Chorus

Swing has ri - sen, what ___ next? ___

3 - Ensemble: aria material and **Alexis Aria Backing Chords**

4 - **Alexis the Scanner**: first section of the aria:

With corporate preoccupation (♩ = 50)

Alexis the Scanner

Those as-so-ciates are star-ting to streng-then and or - ga-nise ___
My do-mi-nant con-trol ___ is fa - ding be - fore my eyes ___

5 - Ensemble changes the chords and their lenght.

6 - **Alexis** sings the rest of its aria. The harmony changes at the repetition.

With an increasing "fulfilment" worry (♩ = 50)

Alexis the Scanner

They must'ntget ___ Swing back to life to help out! Or ___ the ___ ex-plo-tai-tion
of ___ em - ploy-ment laws no ___ lon - ger can be flout!

7 - Chorus: *Termination Motif*

Termination Motif

Slow (♩ = 50)

p

Chorus

Ter - mi - na - tion, ter - mi - na - tion

(until the end of this number)

8 - Over the *Termination motif*, **Alexis the Scanner** speaks

9 - Kindly, the **Line Manager**, controlled by **Alexis the Scanner**, fires the **Lead Picker** singing:

With the false sweetness that a position of power gives to you (♩ = 50)

Line Manager

Ter-mi-na-tion, ter-mi-na-tion, pro-duc-ti-vi-ty vio-la-tion. Fai-lure to con-sis-ten-tly meet

pro-duc-ti - vi - ty rate. It's time to go please va-cate_____

10 - **Lead Picker** speaks. Then, attacca to the next number

11 - Captain Swing rises

1 - **Captain Swing** rises. Esemble: *Amazon tune revolted* (in C) with hints of the *Folk Melody*

2 - Chorus: longer version of *Swing Bass Motif #5*

Swing Bass Motif #5

Brave! (♩ = 100)

f

Chorus (Basses)

Swing, Swing, Swing

(continues until the end of the next number)

3 - **Captain Swing** sings the 1st part the workers' letter to Bezos:

Freely. With conviction. With a hint of a stable rhythm (♩ = 100)

Captain Swing

Be-zos, your name is down a-mongst the Black Hearts in the black book and this is

to ad - vise you and the like of you, who have pro - fi - ted from the pan - de -

mic, to make your wills. Ye have been the Black-guard e - ne - mies of the peo -

ple on___ all oc - ca-sions ye have not___ yet___ done as ye___ ought!

4 - After **Captain Swing** finishes singing the first half of the letter, the Chorus' singing intensifies
Chorus: **Fight back Motif #2** on top of the **Swing Bass Motif #5**

Fight Back Motif #2

Brave! (♩ = 100)
mp

Chorus

Fight back, fight back, fight back, fight back,

(repeat until 11.5)

5 - **Captain Swing** sings the second part of the letter

Freely. With conviction. With a hint of a stable rhythm (♩ = 100)

Captain Swing

Sir, this is to ac - quaint you that if you don't en - sure sur - veil - lance

tec - no - lo - gy is on - ly used - for le - gi - ti - mate rea - sons and

put and end cru - el and pu - ni - shing per - for - mance rates we shall _____

com - mence ma - chine brea - king di - rec - ly. Signed on be - half of the whole!

6 - Chorus members singing **Fight Back Motif #2** change to **Swing Long Motif**:

Swing Long Motif

Brave! (♩ = 100)
f

Chorus

Swing, Swing, Swing, Swing

(until the end of the next number)

7 - **Captain Swing, Lead Picker, and Lead Packer** deliver the last lines of the number. The Chorus' singing intensifies in response to the words:

Signed on behalf of the whole.

Mark this thou Despot.

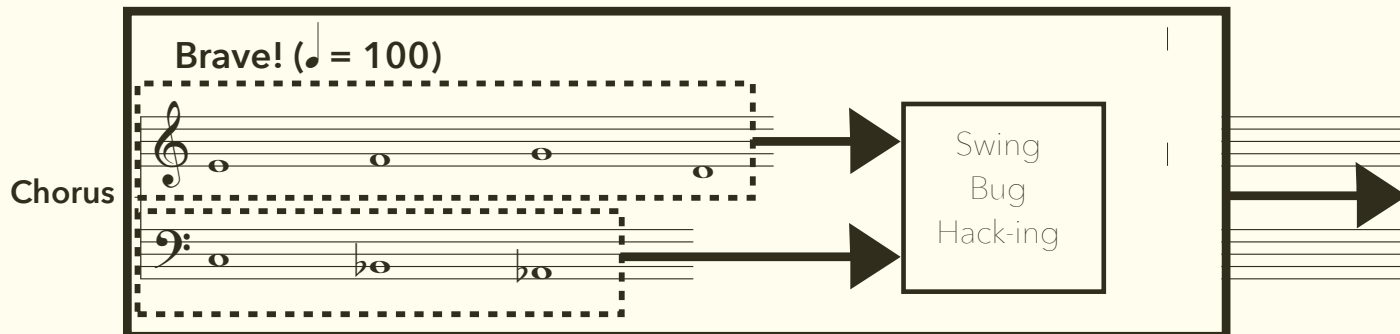
12 - The Offering of Bugs

1 - Chorus: continues the background singing from the previous number

Ensemble: music material from *Poor Old Associate* and *Folk Melody*

2 - **Captain Swing** speaks

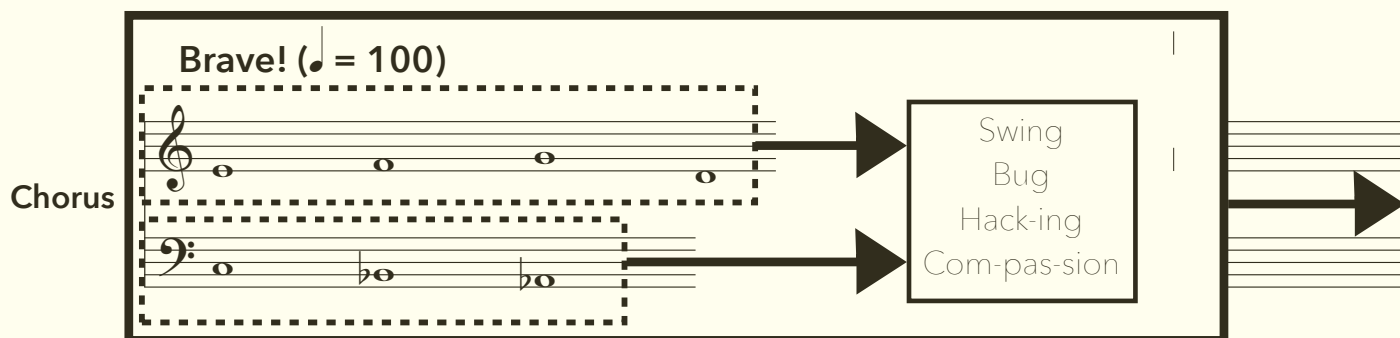
3 - Chorus: adds more words to the background singing



4 - **Captain Swing** speaks:

*This is the bug of compassion,
corporate greed it will refashion.*

5 - Chorus: adds more words to the background singing



6 - **Lead Picker** says:

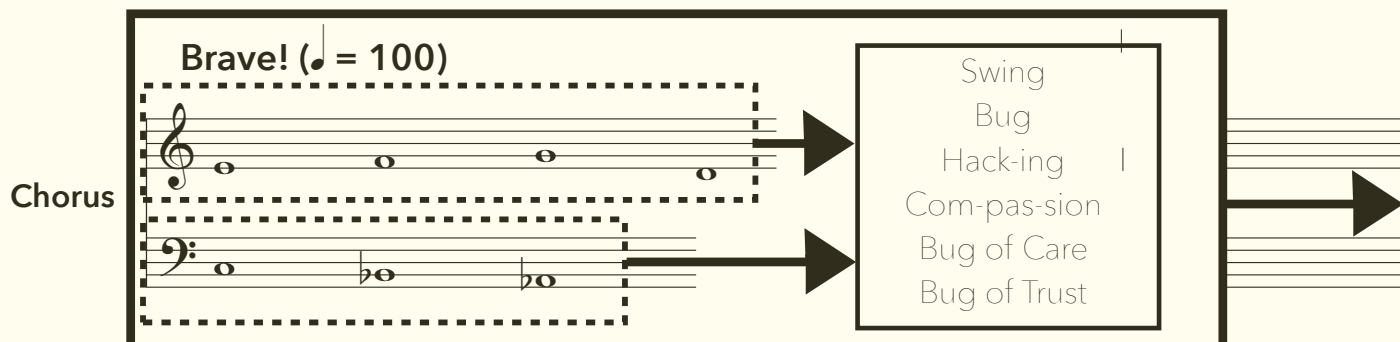
*I will release this bug of care,
greed and profit it will snare.*

7 - **Lead Packer** says:

*I will release this bug of trust
greed and profit it will snare.*

8 - Chorus: adds more words to the background singing

Attacca to the next number

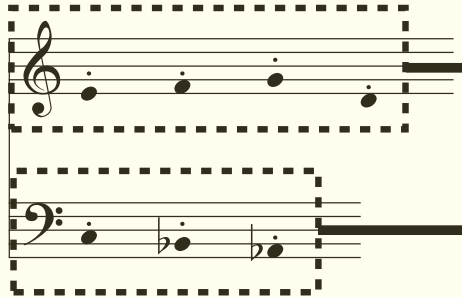


13 - Molly gets Hacked

- 1 - Chorus and Ensemble: Sparce version of the material from the previous number
More words added to the background singing

Freely (unmeasured)

Chorus



Swing Bug Hack-ing Com-pas-sion Bug of Care Bug of Trust Ex-tra break High-er wage U-nib-nise P-P-E A-ma-zon

- 2 - **Molly Bot** and **Alexis the Scanner** speak


- 3 - **Alexis** says:

*This is vile and finantially unsettling.
Damn these bugs monstrous meddlings.*

- 4 - Background music and singing fade to a less disruptive texture,
reminiscent of the algorithm

Brave! (♩ = 100)

Chorus



Ca - pi - ta - lism is bro - ken

Ca - pi - ta - lism is bro - ken

Ca - pi - ta - lism is bro - ken

- 5 - **Molly Bot's** speech

- 6 - **Alexis the Scanner**, angrily, shouts:

*SHE IS MINE! I say,
there's no way I've lost!
There's a price to pay and your job is the cost!*

- 7 - Ensemble rapidly plays the Amazon tune. Attacca

14 - The Firing of the Line Manager

1 - Ensemble: fast **Amazon tune**

Chorus: material from **The Algorithm**

Electronics: **Scanner motif**

2 - **Alexis the Scanner** menaces **Line Manager**

3 - **Line Manager** says:

But you have given me no warnings!

4 - **Alexis the Scanner** sings:

Alexis the Scanner

Your com-plaints are not con-cer-ning My le-gal team
will see You are fired im-pec-ca-bly!

4 - Ensemble and Chorus stop. **Scanner Motif** continues

5 - **Alexis the Scanner** fires **Lines Manager**

6 - The **Line Manager** takes off the computer. All the music stops

15 - Line Manager's Doubt Aria

1 - Chorus and Ensemble: "**Swing**" **Bass Motif #3** (softly)

Chorus

Slow (♩ = 50)
p
Swing, Swing Swing, Swing
(gradually crescendo)

2 - **Line Manager** sings the aria

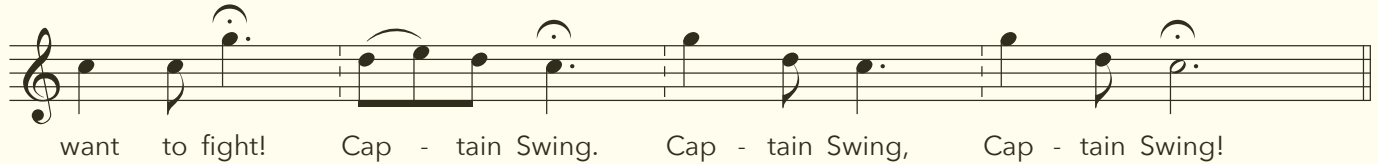
Freely (slightly unmeasured)

Line Manager

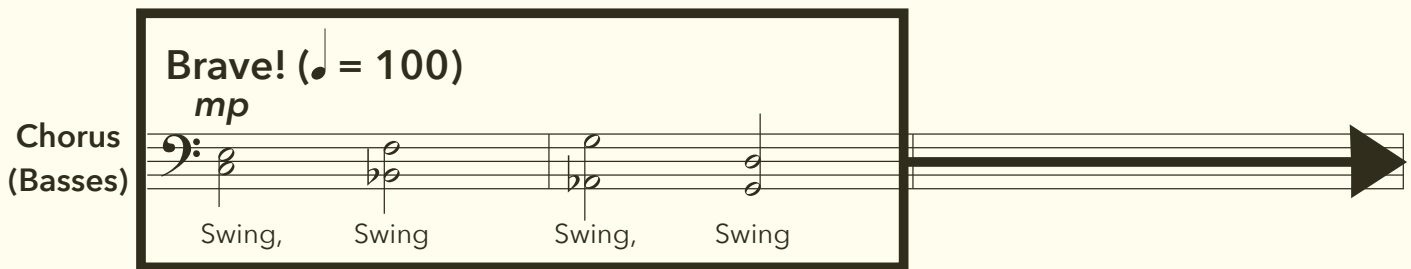
mp
No lon-ger a line ma-na-ger what have I be-come?
All that work, a life un-der the thumb. This cen-tre has sto-len
so much of my life. Then cast me a-side, tru-ly stuck in the knife.



Overcoming Doubt ♩ = 60

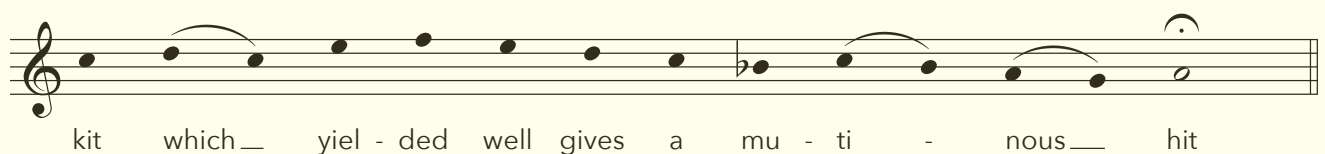
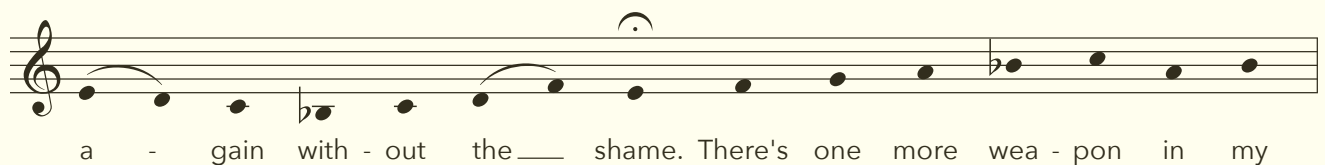
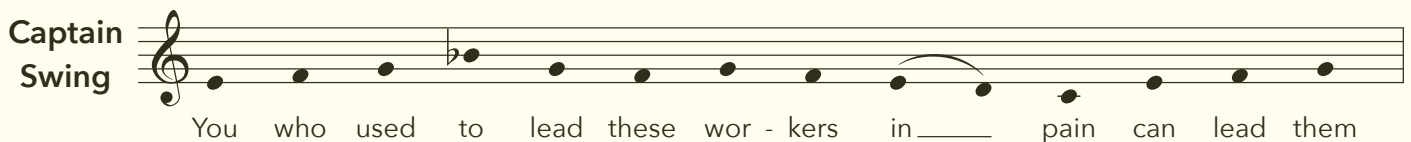


3 - Chorus and Ensemble: "Swing" Bass Motif and #3 Fight back Motif #2
(louder and more confidently)



4 - Captain Swing sings:

Freely, but with a sense of a stable rhythm (♩ = 100)



5 - The **Line Manager** sings:**Freely (slightly unmeasured)**

Line Manager *mp*

I have suf - fered just as much as they,
gi - ven so much of my life a - way

6 - **Captain Swing** replies:

Captain Swing

But now with this S D card it is Be-zos who shall be scarred!

7 - Chorus: takes the words from **Captain Swing**:

With courage ♩ = 60 (until the end of the number)

Chorus

With this S-D card, it is Be-zos who shall be scarred

With this S - D card it is Be-zos who shall be scarred

8 - Duet between **Line Manager** and **Captain Swing**:**With courage** ♩ = 60

Line Manager:

They say they can sim - ply re - place us.

Captain Swing:


So you must teach them your sta - tus,

Line Manager:

Your al - go - rithms will learn em - pa - thy

Captain Swing:

You no lon - ger ac-cept this im - pu - ni - ty

Line Manager: 
I'll teach them the les - son that they de - serve —

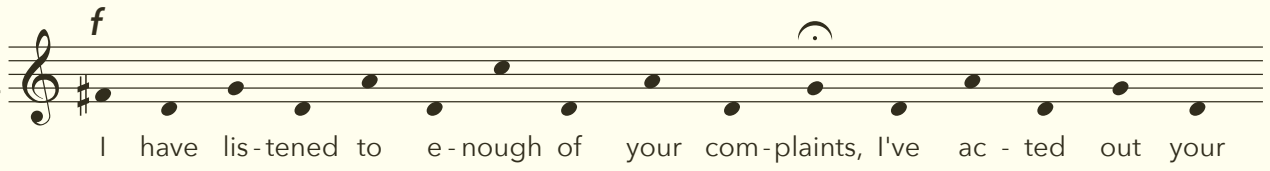
Captain Swing: 
To - ge - ther your voi - ces will be heard, will be heard!

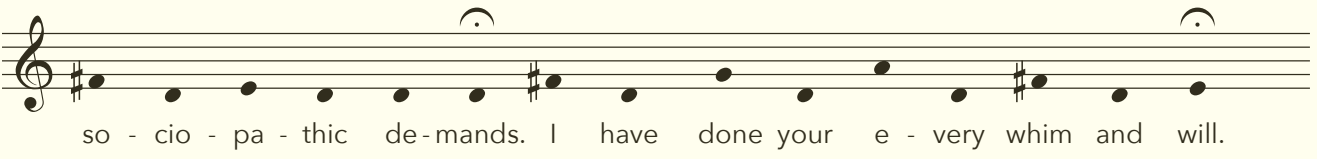
16 - The Line Manager Fights Alexis


1 - Ensemble: **Amazon Tune Revolted** (in D)

2 - The **Line Manager**, empowered by **Captain Swing**, sings:

Freely (unmeasured, but rhythmically hinting at the *Amazon tune*)

Line Manager 
I have lis-tened to e-nough of your com-plaints, I've ac - ted out your


so - cio - pa - thic de-mands. I have done your e - very whim and will.

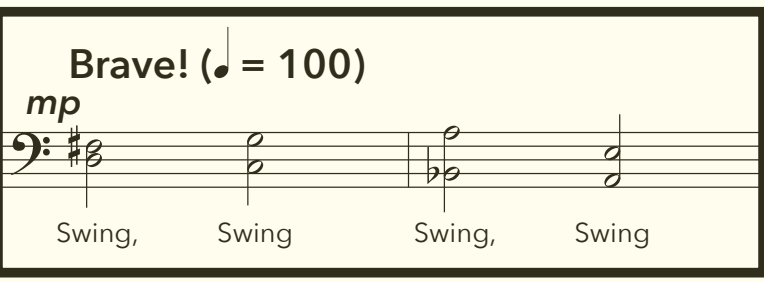

And now it is I, Dal - ma, who com - mands!

3 - The Chorus of Pickers and Packers join the fight against **Alexis the Scanner**


"Swing" Bass Motif and **#3 Fight back Motif #2** (in D)

Ensemble: combination of different motifs from the piece (in D)

Brave! (♩ = 100)
mp

Chorus (Basses) 
Swing, Swing Swing, Swing

mp

Chorus 
Fight back, fight back, fight back, fight back,

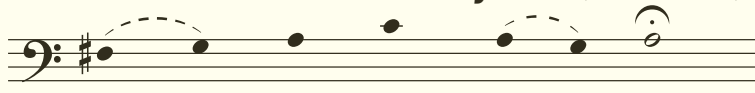
AUTOHOODENING: THE RISE OF CAPTAIN SWING

5 - The **Lead Picker** and the **Line Manager** sing before inserting the hacking SD card into **Alexis the Scanner**. They complete each others' lines

Freely. With conviction.

With a hint of a stable rhythm (♩ = 100)

Lead Picker:



1: From your mo - dern day___ slaves -
5: At_____ last you'll have no choice

Line Manger:



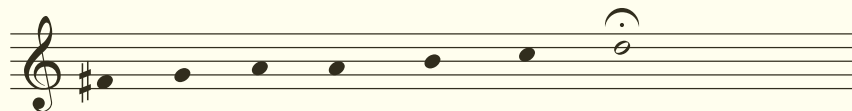
2: Worked in - to our___ graves
6: You will lis - ten to our voice!

Lead Picker:



3: Out___ of these pri - son cells!

Line Manager:



4: O - ver - tur - ning cor - porate hells!

6 - Ensemble: During the hacking of **Alexis the Scanner**, climactic point of the music
Alexis the Scanner sings with the **Scanner Motif**:

Alexis the Scanner



Time off... Re - peat un - til... Loo time... is__ man -
da-to - ry... to ex - tract... tar - get struc - ture... Up - date
as-so - ciate... cut - ting... dis - ci - pli-na - ry e - poch...

7 - Silence

8 - **Alexis** monologue

9 - General cheering

17 - Epilogue A: The New Unionised Love

1 - Chorus: *Renewed Pick Pack Motif*

Renewed Pick Pack Motif

Chorus

With conviction (♩ = 60)

The po - wer is back in wor - kers' hands

3 - Chorus (basses): *Renewed Workers Bass*

Renewed Workers' Bass

Chorus (Basses)

With conviction (♩ = 60)

The po - wer is back in wor - kers' hands

3 - Ensemble: *Love Brass Chords* + hints of *Poor Old Associate #1* (in D)

4 - New love duet between **Alexis the Scanner** and **Molly Bot**

Alexis the Scanner

Our love is like a u - nion

Molly Bot

Fair and de - cent ins - ti - tu - tion.

Alexis the Scanner

Our love is like full paid sick leave.

Molly Bot

A con - tract that - doesn't de - ceive.

Alexis the Scanner

Our love is like ac - ces to P - P-E

Molly Bot

Pro - per Health and Safe - ty.

Alexis the Scanner

Our love is like ear - ning a re - al li - ving wage.

Molly Bot

Wor - king con - di - tions, tur - ning a new — page

5 - *Renewed Pick Pack Motif* fades out, finishing the number

18 - Epilogue B. Final Chorus

1 - Ensemble: *Amazon Tune Revolted*

2 - Chorus: *Celebratory Pick Pack Motif*

Celebratory Pick Pack Motif

Chorus

Celebratory (♩ = 100)

Pick, — pack, — Swing's back. —

3: Ensemble: *Autohoodening Reel*

4 - Chorus (sottovoce): *Celebratory Pick Pack Motif* and *Folk Song #2*

Folk Song #2

Freely (unmeasured)

mp

You will now treat us as hu - mans. You will not treat us as — ro - bots. We are not — part of your da - ta stream

5 - **Team** narration:

*You will now treat us as humans,
You will not treat us as robots,
We are not part of your data stream*

*We are no longer your nameless associates,
We are fellow workers with a happy face!
Catching up in our resting space*

6 - Ensemble: **Autohoodening Reel**

7 - Chorus (sottovoce): **Celebratory Pick Pack Motif** and **Folk Song #2**

8 - **Team** narration:

*Sore feet, back, hands, your head aches?
Make sure you take adequate breaks. Feeling sick?
Stay at home, your job's not at stake.*

*Together working in harmony
Trusted, not monitored endlessly
Our bodies respected with empathy.*

9 - Everybody: Final **Poor Old Associate** (in D) with new words
It repeats over and over until the end of the play

Celebratory ♩. = 100

All *f*

You will NOW treat us as hu - mans, — you

will NOT treat us as ro - bots, — we are NOT — part of your

da - ta — stream. You will NOW treat us as hu - mans.

10 - Over the singing of **Poor Old Associate**, the **Narrator** ends the play with the words:

*Now you know what they endure
We hope that you will not ignore
We know you want your presents quick
But stop and think before you click!*