

An abstract artwork featuring a layered, textured surface. On the left, a bright yellow, elongated, bulbous object, possibly a piece of clay or a fruit, is positioned vertically. To its right, a white, elongated, pointed object, resembling a piece of bone or a shell, is placed horizontally. The background is a complex mix of light and dark tones, with visible textures of paper, fabric, and paint. The overall composition is layered and textured, with a torn edge at the bottom.

Other lands

Georgia MacGuire and Jacqueline Taylor

Abjection is ... a primer of affect and is the operation through which affects are given valency: either negative or positive, which in turn articulate modalities of othering as oscillations between the empathetic and ethical, or repellent and adversarial.

- Estelle Barrett, *Abjection, Affect and Othering Through Art*

Otherlands is the result of a long-term period of collaborative research by Estelle Barrett, Georgia MacGuire and Jacqueline Taylor. Underpinned by a new materialist approach, it engages with Julia Kristeva's thinking on abjection and how it is articulated in art as a process of othering.

The artists expand the fields of installation, painting and sculpture by innovating the use of materials as well as the affect their associated materialities they have on the viewer. In doing so, MacGuire and Taylor put into practice the inner workings of abjection as a primer of positive affect. Their work evokes tensions where the viewer must navigate disjunctions between states such as the sacred and profane, empathy and suffering, attraction and repulsion, purity and contagion as well as textual and painterly registers and their ambiguities.

The continual oscillation between these states underpins the aesthetic encounter with the work that resonate closely with Kristeva's chora and semiotic dimension of language. It is here, where discourse relating to meaning-making and signification can be extended, opening up sites of otherness through the provenance of affect and encounter that does not rely on the closure of representation or socio-symbolic structures.

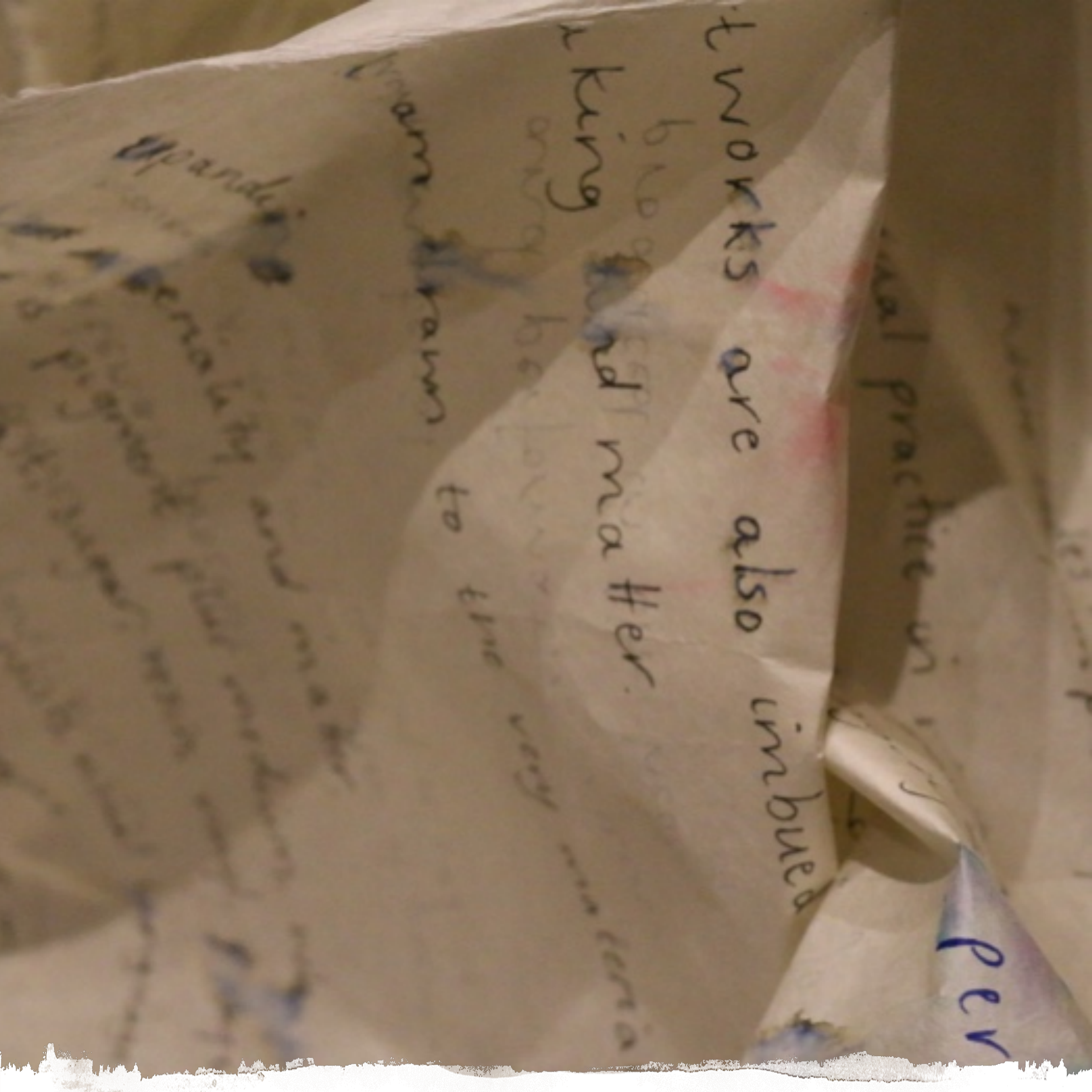


I want to read you a quote from my mother:

"You are from Mother Earth, and when Bunji guides your spirit to our ancestors in the stars, your flesh, blood and bone belong to her."

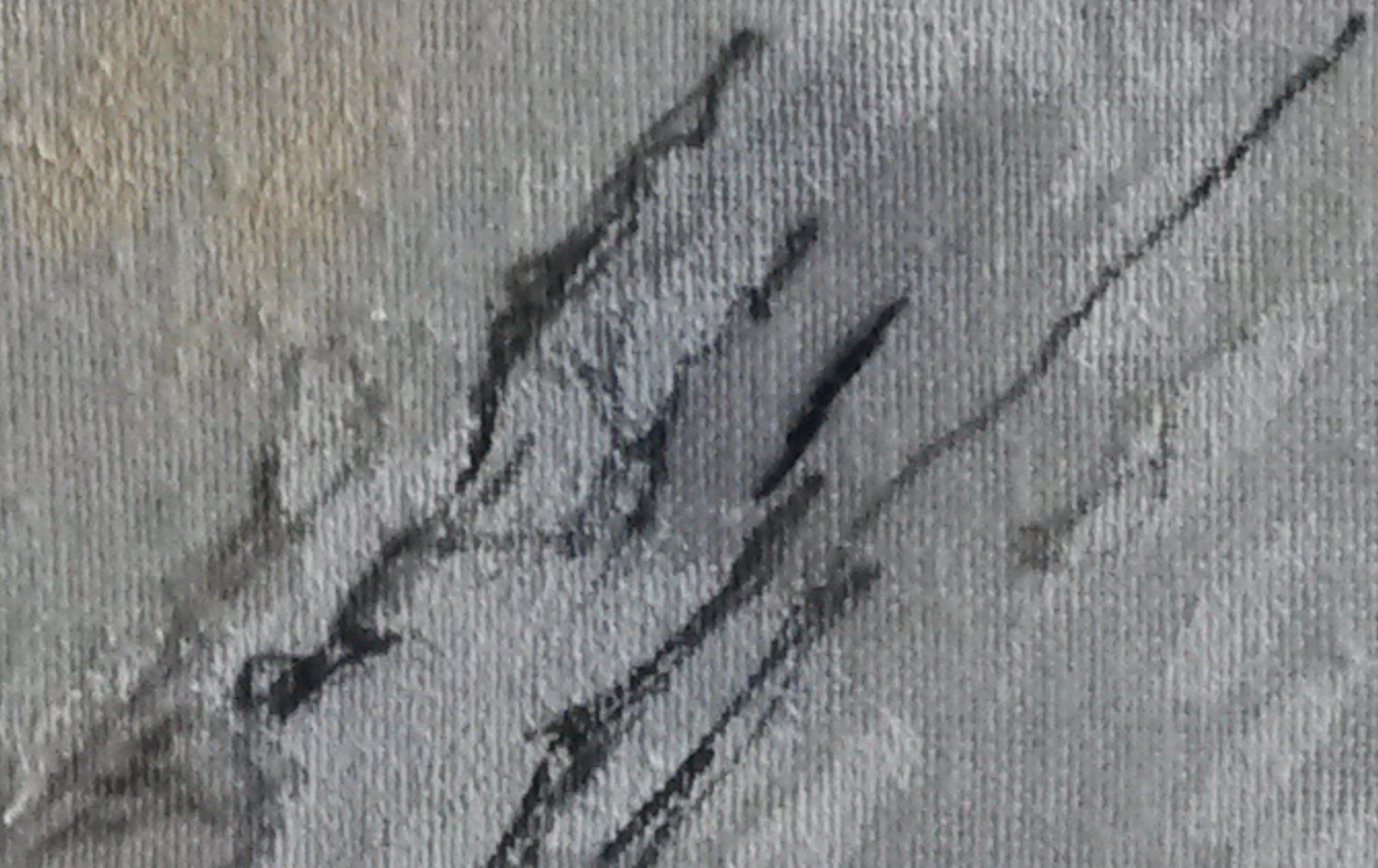
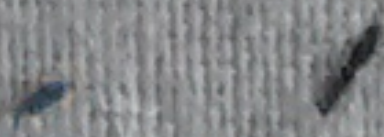
- Georgia MacGuire, Queen of the Otherlands





[pause]

Here in front of me sits a delicious thick gloopy blob of paint. There, bare, in all its sensuous materiality. It excites me. It evokes in me something very real, which I feel on a bodily and psychical level, but with which words cannot fully grasp.



Biographies

Georgia MacGuire

Georgia MacGuire is a contemporary Indigenous artist based in Victoria, Australia. She received a Bachelor of Creative Arts from Deakin University, Melbourne in 2004. Her work has since been selected for a number of awards and scholarships including the CAL Victorian Indigenous Art Award for three dimensional works and the People's Choice prize.

MacGuire is drawn to materials that reconnect her to traditional indigenous craft practices. Their work has featured in exhibitions at the Art Gallery of Ballarat and the Horsham Regional Art Gallery and recent exhibitions include: 'Wominjeka' at Koorie Heritage Trust, 'Both Sides of the Street' at Counihan Gallery, Brunswick and 'The F Word' at Ararat Art Gallery, Ararat. MacGuire's work is held in public collections including the City of Melbourne and Ararat Regional Art Gallery.

Jacqueline Taylor

Jacqueline Taylor is an artist, writer, researcher and lecturer based in Birmingham, England. Her creative practice is concerned with the ways in which non-representational art forms function as a form of language. She was trained as a painter and completed her practice-led PhD in 2013 titled 'writing//painting: l'écriture feminine and difference in the making'.

Taylor's work often takes the form of hybrid work such as paintsculptallations, textstallations, book-paintings, painting-poems and performance-texts. She also creates hybrid academic outputs which are usually located in-between the material, textual and performative registers of language. Taylor has published, performed and exhibited her work globally. Her work was most recently exhibited in 'Topologies of Sexual Difference' at the George Paton Gallery, Melbourne Australia.

An exhibition held in conjunction with the Otherlands live event as part of The Kristeva Circle annual conference at the University of Memphis, September 2015

