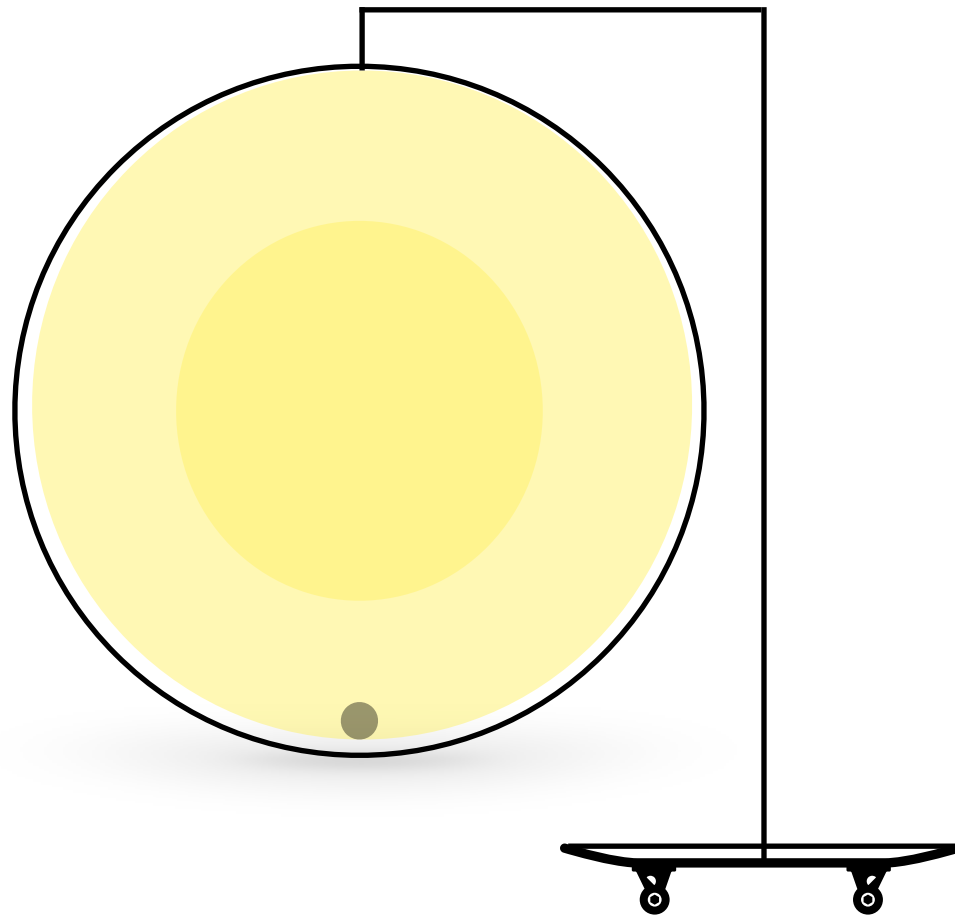


舉杯邀明月

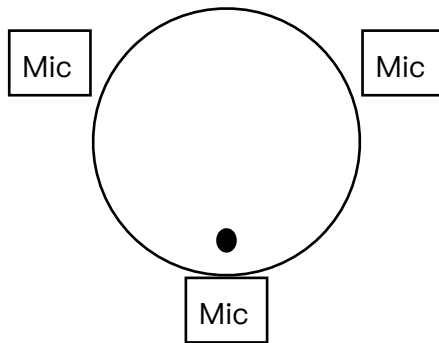
Shadows in Three

Katherine Ching-Fang Teng



## Set up

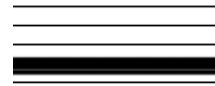
One bass drum skin hanging on a stand.  
A spotlight points at the middle of the skin.  
A contact microphone attaches at the bottom.  
3 microphones in front of the skin.  
One LED circle projecting light  
3 players  
A good sound technician



## Representative color for each player

Teping - Green  
Dylan - Yellow  
Kalina- Red  
Simon - Blue

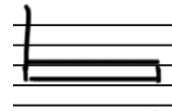
## Notation



Scratch with nails (grab)



Slap with palm



Scratch with nails (back nails)



From back nail to open



Flip with nail

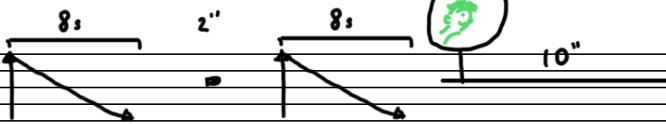
Start from dark

Dimmer

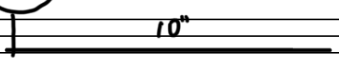


Teping

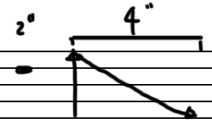
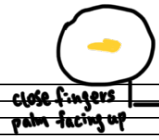
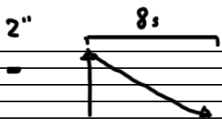
(Light dimmer)



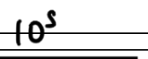
Dylan



Dimmer



Kalina



Muted

$\text{♩} = 60$

Teping

Dylan

Kalina

10''

5 4 3 2



First time play 1. only. / Second time play 1.+2. / 3th 8th play full.  
 All start from piano.

x3

DP

DL

KLN

(cresc. every repeat)

fade in flanger keep effect

F = P

x4

x3

x4

DP

DL

KLN

f

P

f

f

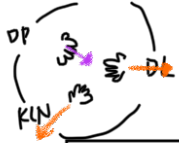
f

Join 2nd time

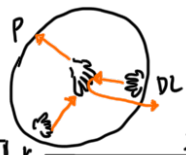
Join 3rd time

Join 4th time (Finger tap.)

slowly rising EQ peak



20-30  
Finger tapping.



≥20"



KLN



DL

x4

DP

DL

KLN

→ center

Gradually fade out

Join after few times

Gradually fade out\*

Join after DL

Gradually fade out\*

flanger off phaser sweep ← ceiling floor

flanger on

on contact mic.

4 3 4 3 2

4 3 4 3 2

4 3 4 3 2

4 3 4 3 2

4 3 4 3 2



x4



x4



x4

DP

DL

KLN

on contact mic.

Nadai

damp.

4 3 4 3 2

3

3

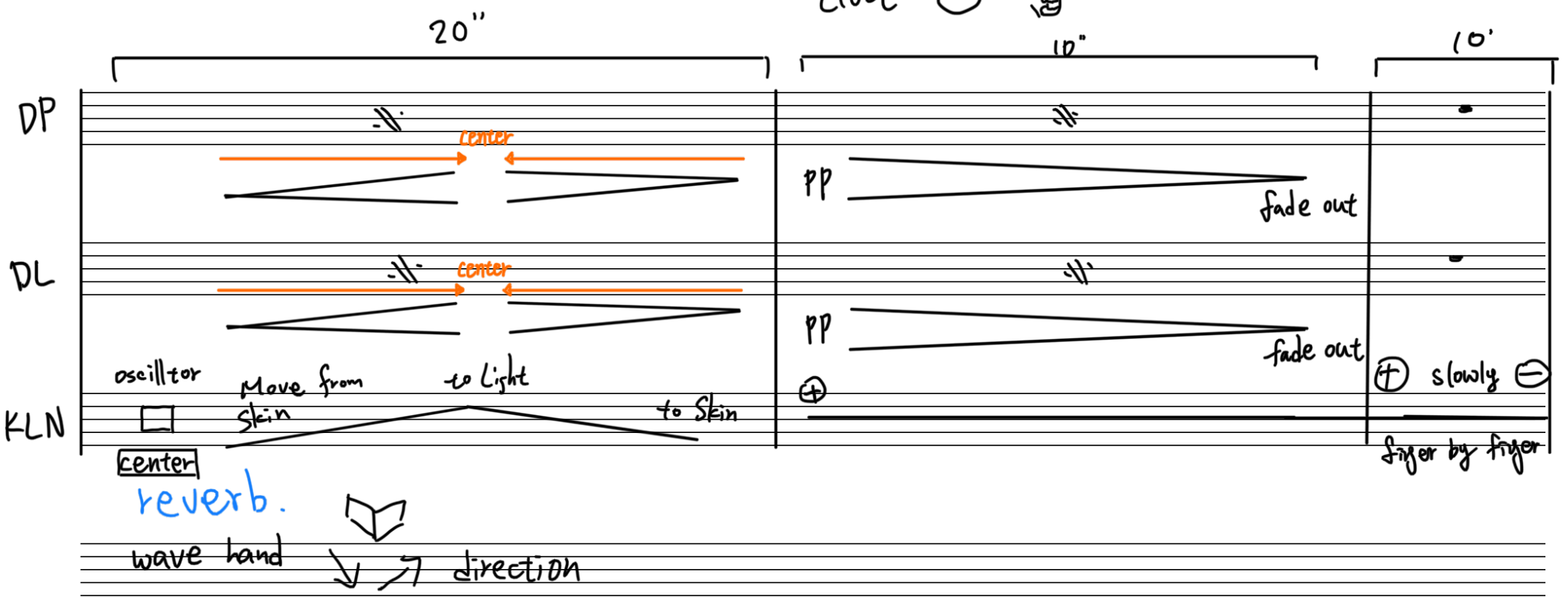
3/2

4=3

4=3



open ⊕   
 close ⊖ 



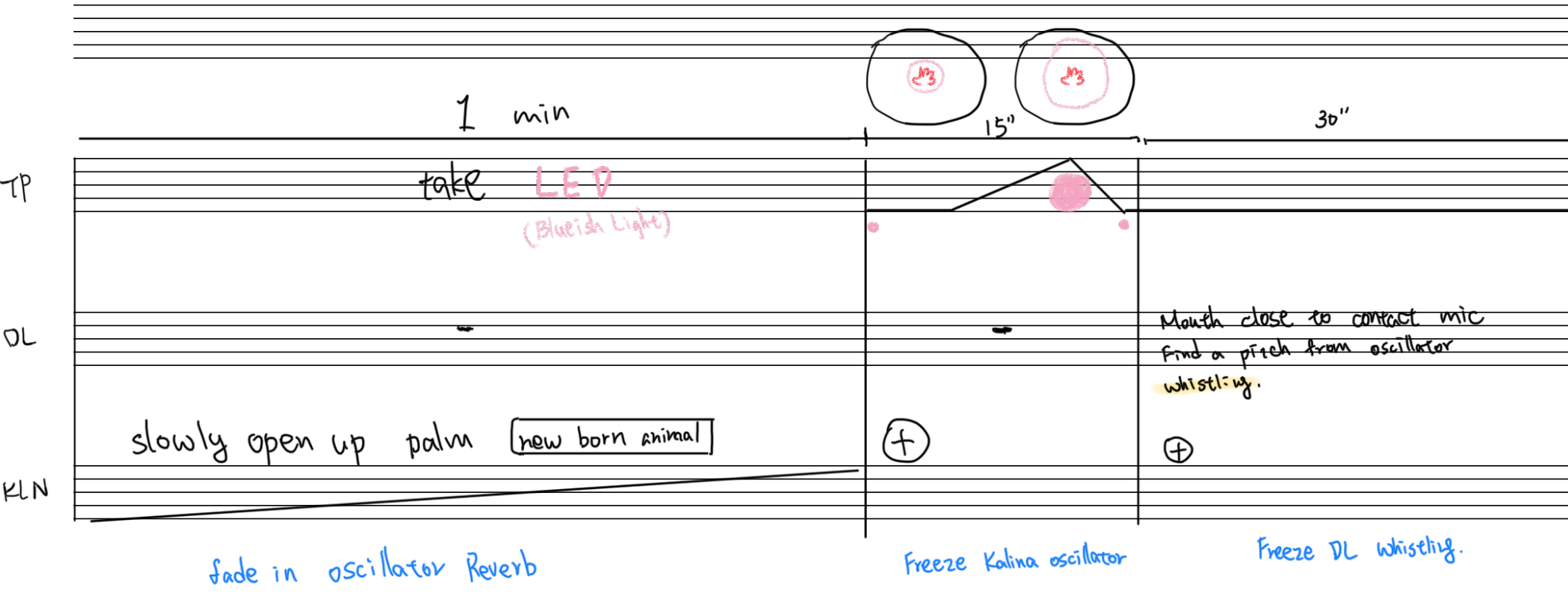
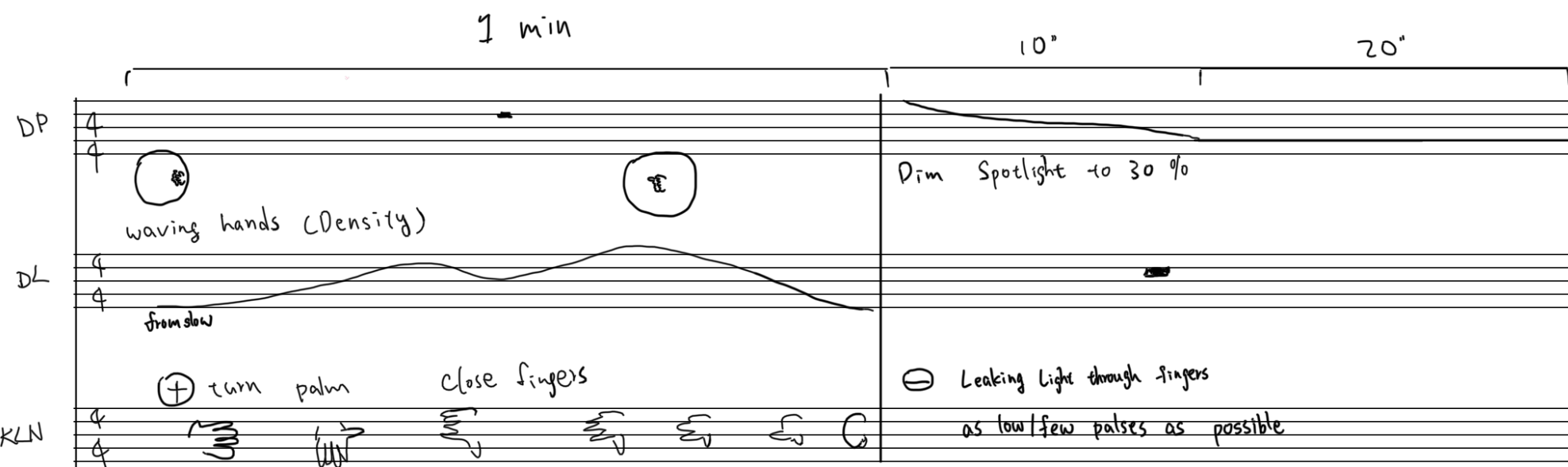
PP 7 R.H.  
8 L.H.

DL 7 R.H.  
8 L.H.

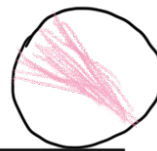
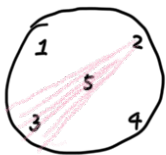
KLN 7  
8

reverb off  
flanger off





from performer side



30"

20"

10"

TP

DL

KLN

TP: 5 1 3 4 2

DL: scratch skin on the edge of the LED light

KLN: Gradually go down. Move fingers like squid legs (Doing magic)

squid move

fade out Reverb to 20% (freeze sound)

5"

30"

Rasengan

1 min

spotlight

TP

DL

KLN

TP: off

DL: Kamehameha

KLN: close to spot

hold hand with KLN

To skin

100%

0%

Fade in Freeze

fade out everything.