



Information on last known relatives of the orphan

Ministry of Justice and Security
Central Authority International Childaffairs

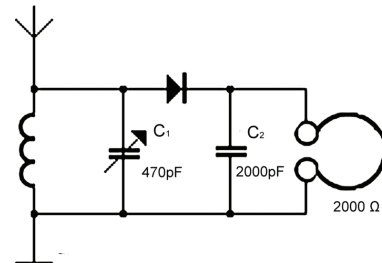
Adoption Facilities
De Bouw 93
3991 SZ Houten
Tel: 030 233 03 40

The purpose of this form is to inform the applicants about the known history of the relatives of the orphan, as to give insights regarding the upbringing and past experiences and/or traumas of the orphan.

Known relatives

1. *Crystal Receiver*

Crystal radios are the simplest type of radio receiver and can be made with a few inexpensive parts, such as a wire for an antenna, a coil of wire, a capacitor, a crystal detector, and earphones. It uses only the power of the received radio signal to produce sound, needing no external power.



2. *Kraut Sieve (Moffenzeef)*

The Germans used jamming stations to try to block the reception of Radio Orange and the BBC. A 'kraut sieve' was a home-made indoor antenna intended to reduce the effect of German jamming stations.

The device consists of a coil, a variable resistor (potmeter) and a variable capacitor. One end of the coil is connected to an antenna, a curtain rail, aimed from east to west, is suitable as main antenna.

By twisting the two knobs, the signal could be filtered to result in an audible signal.

