

# SATURN

System and sustainable approach to virtuous  
interaction of urban and rural landscapes

**CONFERENCE / WORKSHOP / EXHIBITION**

**31 JULY – 1 AUGUST 2019**

Chantelle Harris



BIRMINGHAM CITY  
University

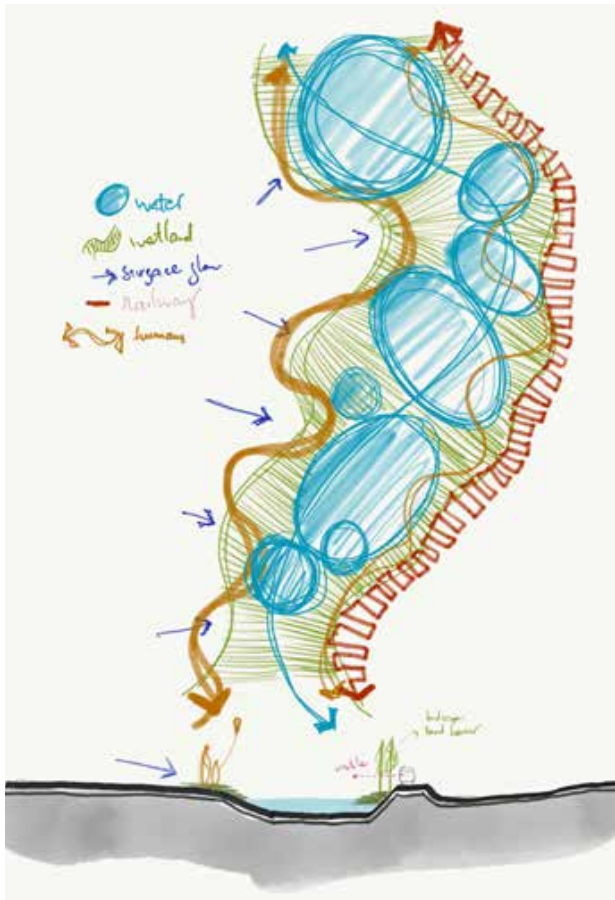
**CATiD**  
Critical Artistic Thinking in Design



Birmingham  
City Council







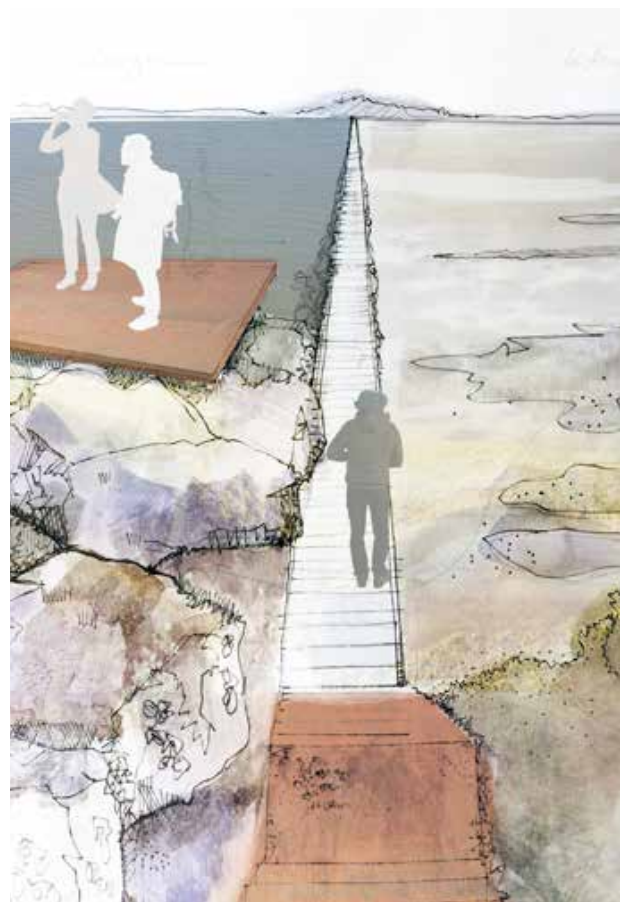
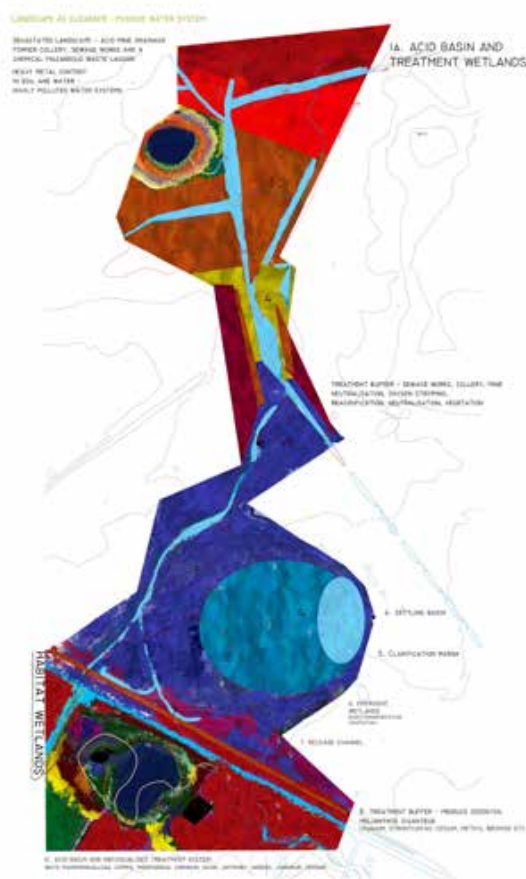
## SATURN VISION

The SATURN project is funded by EIT Climate-KIC, a Knowledge and Innovation Community (KIC), working to accelerate the transition to a zero-carbon economy supported by the European Institute of Innovation and Technology (EIT). Climate-KIC identifies and supports innovation that helps society mitigate and adapt to climate change in the belief that a decarbonised, sustainable economy is not only necessary to prevent catastrophic climate change, but also presents a wealth of opportunities for business and society.

The SATURN project comprises partners from Birmingham (UK), Trento (Italy) and Gothenburg (Sweden). It is an important component of the proposal being undertaken by CATiD BCU, to establish a new kind of National Park for the West Midlands launched at the Landscape and Infrastructure conference at BCU in 2018. It builds on the urban challenge projects undertaken by Trento and Gothenburg summarised in the Climate-KIC White Paper on Public Private Partnership for sustainable land use in urban areas.

A recent survey of 10 regions with more than 10 million inhabitants reveals “the quality of metropolitan landscapes is a blind spot for many regional economic strategies” (Delta Metropolis 2016) resulting in “policies that are degrading the living world on a scale that threatens all of our futures” (Raworth 2017). SATURN aims to redress this problem by helping to re-conceptualise and transform regions by realising new, holistic and integrated approaches to urban and rural development and change, to underpin strategic regional design decisions and increase awareness of the capacity of landscape to help meet the 2030 UN Sustainable Development Goals (UNSDG’s).

Based on a new idea of landscape, by comparing and contrasting a broad range of scales and contexts, the case studies will bring a much-needed fresh perspective to tired, out-dated and ineffective practices. SATURN will help address an evident deep-seated need for new ideas and a new approach, particularly in context of the deepening climate emergency and food security, and will be instrumental in transforming the identity and ambitions of regions in a way that prioritises quality of life, environment and landscape as economic investments, engendering civic pride and hope for future generations.



## BIRMINGHAM AND THE WEST MIDLANDS VISION

With the youngest, fastest growing, most diverse population in the UK, the imminent arrival of HS2, the hosting of the Coventry City of Culture 2021, the Commonwealth Games in 2022, the identification of Birmingham as one of 16 biophilic cities in the world and its recent declaration of a climate change emergency, the West Midlands has a unique opportunity to re-discover a vast, hidden landscape that has been largely overlooked and undervalued for decades.

The West Midlands plateau, a watershed between two of the largest river systems in the United Kingdom, is one of the most geologically diverse regions in the world. Previously an area of dense woodland, its matrix of valleys stretches from the Black Country, the crucible of the industrial revolution, to Birmingham, once the city of a thousand trades and now one of the most rapidly developing business hubs in Europe, from Medieval Coventry to the Saxon town of Tamworth. This immense rolling landscape, the nexus of the UK's major agricultural regions, with its complex infrastructure of canals, highways and byways is married to some of the most beautiful, forgotten areas in Britain and awaits a re-imagining for millions of people with the creation of a West Midland National Park.

By encouraging cross boundary working and delivery, the West Midlands National Park proposal, supported by the interim findings of the government commissioned landscapes review (July 2019), is a means to an end, a vehicle to help drive social, economic and environmental change in the region. A new kind of park that embracing the ambition in the UK Government's DEFRA 25-year plan (2018), focuses on the relationship communities have with the territories that shape their cultural identity, pride and self confidence. It is a vision of what the West Midlands can become when the significance of its landscape is properly realised and celebrated. It will profoundly change the identity of the region. Above all, this proposal's central purpose is real transformation.

This 21st century vision for a new kind of national park coincides with plans for a United Kingdom on the verge of a second agricultural revolution. There is a gathering world focus on high-tech agronomy, reforestation, organic growing, water storage and cleansing. The UK should be in the vanguard of this revolution, creating new models of rural / urban localism and the West Midlands offers a perfect platform for people here to create and develop the capacity to introduce new skills to Europe and the world. Rekindling and re-inventing the connection between communities and the space they inhabit,



recognising the pride people take in that space, its cultural identity be it urban, suburban or rural is very much a modern, contemporary view of how our landscapes work. This is what the West Midlands National Park is all about.

The launch of the WMNP proposal at the landscape and infrastructure conference, the BBC Inside Out West Midlands documentary and the exhibition of student work exploring the implications of the WMNP at a more detailed level (June 2019) are generating an increasing level of public and political interest. The West Midlands Lab, supported by an international Advisory Group, established in February 2019, is currently discussing the next stages with key partners.

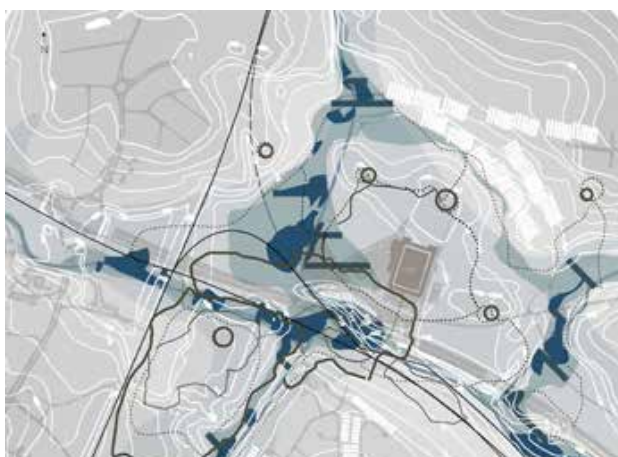
The perfect storm of opportunity provided by the delivery of HS2, City of Culture and the Games will bring a massive economic boost to the region and the park can play a significant role in this legacy as a fantastic natural and cultural resource with its own striking visual identity, a rich diversity of urban and rural habitats, wildlife, heritage and sport. The SATURN project will contribute to this agenda

by helping to shift planning policy and practice in new directions, helping governments and NGOs to achieve their strategic obligations to engage urban populations more effectively and to transition to a zero-carbon economy.

## SATURN CASE STUDIES

For the SATURN EIT Climate-KIC project specific initiatives have been selected to explore the spatial and landscape identity, the cultural diversity and the food and bio diversity needs of the territory. Case studies across the Tame Valley will allow for a more focused and critical analysis of the vision including the development of policy and the interpretation of ideas for implementation within the region. The Naturally Birmingham project offers an integrated governance model while the Growing Birmingham case explores food production in urban and rural environments.

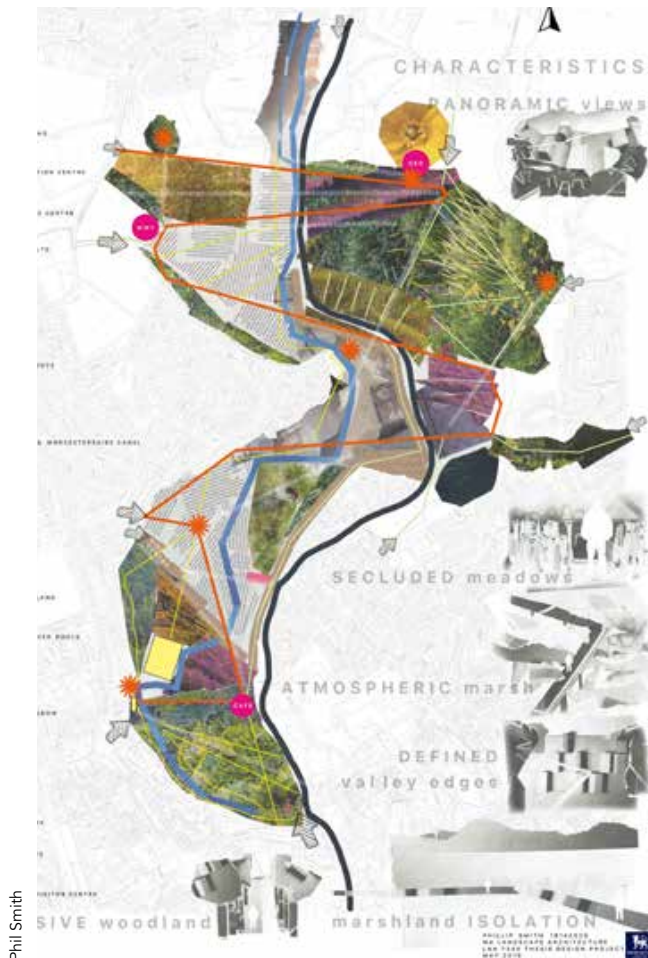
Meng Hao



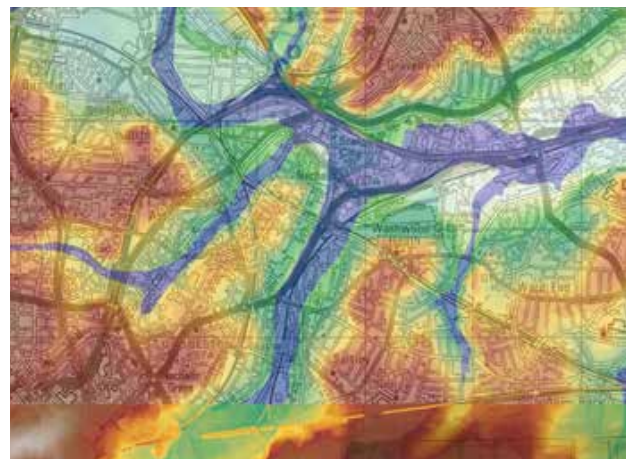
Chantelle Harris



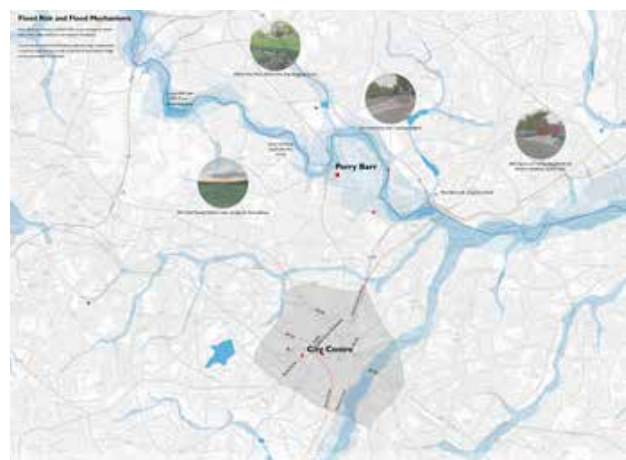
Rob Colbourne



Phil Smith



Kika Vernon



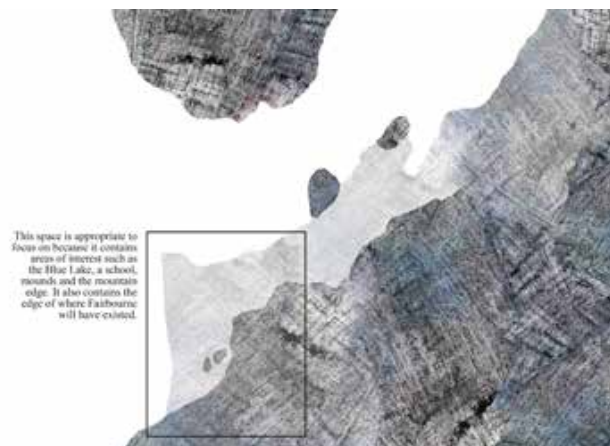
Iris Ip

## CATiD/WMNP LAB STAKEHOLDERS AND INTERESTED PARTIES

Over the last decade we have developed a robust network of stakeholders and decision makers, keen to address local and international issues relating to landscape at a regional scale, whilst investigating new innovative methods to tackle societal challenges with a real environmental conscience.

CATiD/WMNP Lab stakeholders and partners are very diverse and include UN Agencies such as UNESCO, political support from Ministers of State and local MP's, national and local government, NGO's including HS2 Ltd, The Environment Agency, The Arts Council, Natural England, the Ordnance Survey and Transport for the West Midlands, charities, including the National Trust, The Royal Society for the Protection of Birds, The Canal and River Trust, The Landscape Institute, The Heart of England Forest, the Princes Trust and local Wildlife Trusts. The network includes international foundations and not-for-profit organisations including The Nobrega Foundation

and the International Federation of Landscape Architects, local Chambers of Commerce and the Urban Land Institute, the Tame Valley Wetland Partnership, regional NHS groups, the Social Farms and Gardens organisation and several local bishops.



Rachel Goddard



## BIRMINGHAM HUB

The Birmingham Hub comprises Birmingham City Council and the CATiD research and consultancy centre in Birmingham City University. For the scope of this project the Hub deals with the metropolitan area of the City of Birmingham and the wider region covered by the West Midlands Combined Authority. Located on an uplifted sandstone plateau containing the headwaters of the River Tame and tributaries of the River Stour, the West Midlands was a major centre of mining and industrialization in the eighteenth, nineteenth and early twentieth centuries. It is a truly post-industrial landscape.

The city of Birmingham covers a land area of 268km<sup>2</sup>. The Birmingham metropolitan area is one of the 10 largest of Europe with an estimated population of 4,500,000 inhabitants. The City works closely with UK Government Departments on many fronts, for air quality, the future of urban green space, sustainable transport and sustainable development. It is a pilot for the Health Impact Assessment for Developers. It is the only UK Biophilic City and a global pilot authority for WBCSD 'Zero Emission Cities' framework guide.



Rachel Goddard



Iris-lp

CATiD's research aims to place quality of life and sustainability-oriented transformation of the region at the top of the political agenda. We are doing this by investigating and proposing a new innovative and territorial approach to spatial planning and delivery: one that is based on an in depth understanding of the physical materiality of the region; its identity; and social, cultural, environmental and economic drivers. The research will help cultivate alternatives to the traditional development practices which have contributed to long-term social, economic and environmental loss or damage. We believe that the quality of our environment is directly proportional to the quality of our lives and work with our partners and clients to achieve this.

# MEMBERS

## PROFESSOR KATHRYN MOORE CATiD BCU



Kathryn Moore, Immediate Past President of the International Federation of Landscape Architects (IFLA) and Professor of Landscape Architecture at Birmingham City University has taken a lead role in redefining the relationship between landscape, culture and governance, finance, health and community engagement. Her radical proposal for a West Midlands National Park was launched in a major conference held in BCU in June 2018. She is a member of the Independent National Design Review Panel for HS2, a contributor to the Government Commission to Review Landscapes, a founding partner for the World Design Summit and Director of the UK International Traditional Knowledge Institute.

## DR ANASTASIA NIKOLOGIANNI CATiD BCU



Anastasia Nikologianni is qualified as a Landscape Architect MA and Agriculturist/Horticulturist MSc., and holds an EIT Climate-KIC labelled PhD in Landscape Architecture with regards to the role of low carbon, spatial quality and the contribution design can make to the development of regional landscape-based spatial strategies. Her recent research has focused on the extent to which spatial quality and low carbon can be delivered in regional landscape design as well as the way visual representations contribute to the design process.

Anastasia is a research fellow and consultant in Birmingham City University and joins the CATiD BCU team, an international, multidisciplinary research, design and consultancy hub.

She is the Chair of the Emerging Professionals Advocate of IFLA World aiming to support landscape architects and designers. Anastasia is a member of the Policy and Communications committee for the Landscape Institute (UK) And a Certified Professional in Accelerating Transitions by EIT Climate-KIC as well as a member of their Network of Coaches.

## NICK GRAYSON BIRMINGHAM CITY COUNCIL



Nick is Climate Change and Sustainability Manager for Birmingham City Council, with a current lead on green infrastructure and natural capital; where he has devised the 'Naturally Birmingham' policy which seeks to put nature at the heart of all decision-making, providing the framework for a 25-Year Environment Plan and the Future Operating Model for Parks. He is also a Senior Research Fellow at the University of Birmingham commencing a five-year study in October 2018 as Principal Investigator on the benefits from green infrastructure to urban air quality across the West Midlands.

Nick sits on three Government Working Groups – for Biodiversity offsetting; for developing a planning Eco-Metric; and developing a national Gi standard; the UN Habitats UK Urban Ecology Forum; West Midlands Natural Capital Roundtable; and advisor on the Biophilic Cities Network Steering Committee.

Nick was a key researcher on the Liveable Cities research programme (2012–2017) resulting in being a co-author of *The Little Book of Ecosystem Services in the City* (2018) which introduced the two-tier hybrid model approach for the future of parks.



**BIRMINGHAM CITY**  
University



**Birmingham**  
City Council

# THE GOTHENBURG HUB

The Gothenburg Hub, which is constituted by the City of Gothenburg (Property Management Administration), Region Västra Götaland (Västarvet and the Agricultural Colleges), PE and Xenofilia AB, has a strong focus on small-scale urban and peri-urban commercial farm strategies and models. Aiming at strengthening this growing sector, a sector much in need for a sustainable future. Through our four cases the Gothenburg tests and improve a universe constituted by models, educational platforms, networks and land lease strategies focusing on creating career and scaling opportunities for new farming entrepreneurs and reconnecting the urban areas of Gothenburg to its countryside and surrounding peri-urban/rural and surrounding municipalities.

Gothenburg has approximately 600,000 inhabitants (municipality) and is situated by the sea on the west coast of Sweden surrounded by a cluster of commuting oriented urban areas situated alongside the main roads and railways in the surrounding municipalities. The city of Gothenburg owns and manage 3,000 hectares of farmland, which is a great asset in the work towards a sustainable future.

The four pilot cases in the SATURN project are (name and objective):

## **LAB190 – green industries and future sustainable land use**

- Revitalising abandoned and underused peri urban and rural farmland thus reconnecting urban and rural areas and scaling opportunities.
- The area stretches through four municipalities and are approximately 70 kilometres long.

## **Stadsbruks Incubator for urban and peri-urban small-scale farmers**

- Increasing the number of local/ecological farmers in and around Gothenburg by focusing on the entrepreneurial aspects of urban and peri-urban market garden farming. Also creating a network of farmers.

## **Model Farm**

- Establish a well-functioning market garden, producing food for the local schools and educating new farmers.

## **Farming Testbeds on public farmland**

- Creating a land lease model and infrastructure resulting in the lowering of thresholds for new commercial small-scale farmers.



# MEMBERS

## ANDERS NILSSON



Anders Nilsson works with regional development based on nature and cultural heritage as a driving force and has built up the LAB190 collaboration platform. The platform forms a model for sustainable development to meet future challenges. Anders has collaborated in recent years over several EIT Climate-KIC projects and participates in another two in 2019–2021. The projects focus on climate-smart solutions, often with ecosystem services and nature-based solutions, by constructing operational business models. Large parts of the work are about increasing cooperation between different sectors.

Anders has also been working with the implementation of The European Landscape Convention in Sweden/Region Västra Götaland since 2008.

LAB190 is a development project in the area alongside national road 190. The landscape along the road is in the form of a green wedge between Nossebro and Gothenburg. The vision here is to create a model area for sustainable development.

## ANNA TERNELL



Anna is senior strategist and sustainability consultant at PE in Sweden. Over the last 20 years, she has gained experience from international work and has good knowledge of working across borders between countries and cultures. Work includes development of national policies and strategies, corporate business strategies, water supply strategies, climate mitigation and adaptation, urban plans including development of sustainable Master Plans for Cities and Special Economic Zones, and development of nationwide transport plans. Prior to that, she worked at the World Bank with the Sub Saharan Africa Transport Policy Programme. She has resided in e.g. Dar es Salaam, Hanoi, Washington DC and Copenhagen. Ms. Ternell has good experience of Climate-KIC projects and has been project leader of a numerous projects in Gothenburg Sweden, including sustainable multifunctional land use and peri-urban development. The work comprised innovative solutions for local economic development, social integration and reduction of climate impacts

## MARTIN BAE PEDERSEN



Martin Bae Pedersen is a farming coordinator at the property management department at the municipality of Gothenburg. He works with farming related issues in an urban and peri-urban context focusing on creating opportunities for more commercial farmers in Gothenburg through developing models for land-lease, development of farming testbeds. Furthermore responsible for practical matters concerning infrastructure and the formal procedures with contracts. He has a background as a human ecologist with a long experience of working with sustainable urban development at the same time he is also a trained organic farmer.

## MARTIN BERG



Martin Berg is a planning officer at the property management department at the municipality of Gothenburg. He works with farming related issues in an urban and peri-urban context focusing on creating opportunities for more commercial farmers in Gothenburg through developing models for land-lease, business models, educational projects, matchmaking, networking with private/public/academia stakeholders on different levels. He is a human ecologist with a long experience of working with sustainable urban development by focusing on food issues, democracy and entrepreneurship in transdisciplinary projects, networks, and vocational training.



City of  
Gothenburg



## TRENTINO HUB

This hub, located in northern Italy in the middle of the Alps, is characterised by a prominent mountain forest and rural landscape with a high natural value, crossed by rivers and infrastructures. It involves a territory of 306km<sup>2</sup> with more than 170,000 inhabitants living in nine municipalities. The largest one is Trento, located in the Adige valley and capital of the Autonomous Province of Trento. Trento is considered one of the cities with the highest quality of life in Italy and was selected in 2014 by IEEE as one of the ten cities in the world with the title of smart city model. Trento is involved in various national and international projects which focus on circular economy and valorisation of urban/peri-urban spaces (Nutrire Trento, Los\_Dama!). Comunità Rotaliana-Königsberg, formed by seven municipalities, is a highly specialized agricultural land of wines and apples. The distinctive rural landscape comprises cultural features which have to be valorised under a common vocation which entails preservation of natural elements and liveability. The area is densely crossed by various infrastructures which are fragmenting the connectivity, both for human and ecological dynamics. The Municipality of Pergine Valsugana is the third largest of the region and the fastest in population growth. In its territory, characterised by agricultural land, terraced landscapes, lakes and ponds and mountain slopes, a distinctive process of polarization (abandonment vs. overutilization) has nowadays dispersed the potential the rural-urban relationship can gain from local resources. Fondazione Edmund Mach and University of Trento are two research and academic realities recognized at international level that conserve a strong connection with the local territories. Hub Innovazione Trentino – Fondazione promotes the results of research and innovation in the Trentino system to support the development of the local economy.

## MEMBERS

### MARCO CIOILLI



Since 2002, Marco is Assistant Professor at Department of Civil Environmental and Mechanical Engineering, DICAM, University of Trento, Italy. He teaches Master and PhD courses of Applied Ecology, Field sampling and Spatial Ecological Modelling, Environmental data management and analysis, directed and organized many Summer Schools and GIS courses in Italy, Tanzania, Rwanda, South Africa. His research interests are Biodiversity conservation, GIS Modelling of natural resources, Landscape ecology and Ecological connectivity, Land use change scenarios, Remote Sensing and mapping, Natural hazards, Invasive species, Tropical

Ecology, Ecosystem services evaluation, Renewable Energy, Traditional Ecological Knowledge. He participated and coordinated national and International Projects, is member and co-chair of UNESCO Chair in Engineering for Human and Sustainable Development, University of Trento and member of OSGEO (Open Source Geospatial Foundation) and of Geoforall and of Education and curriculum committee of OSGEO.

### ALESSANDRO GREITER



Since 2008, Alessandro is Technologist at Fondazione Edmund Mach (FEM). His research interests are on Human Ecology, Socio-Economic analysis of rural and mountain territories, landscape governance and sustainable development. He is author and co-author of more than 20 scientific and technical-scientific publications. In the recent years has been involved in design and coordination of various initiatives supported by EIT Climate-KIC, and act as the Lead of the Orchestrated Ecosystem Project SATURN (2018-2021). He also collaborate with the Head of Centre and Grant Office in creation of international research networks and writing of projects. Since February 2011 until June 2016 he was a member of the "Landscape Observatory" of Autonomous Province of Trento, as representative of FEM. Since July 2016 he is acting as a co-member of the Action Group n. 7 "Green Infrastructure / Ecological Connectivity" of Alpine European Macro-Region (EUSALP) in behalf of the Autonomous Province of Trento.

### GIAN ANTONIO BATTISTEL



Gian is a senior technologist at CRI-FEM and member of FEM Managing Board. In recent years has broaden his interests on socio-economic analysis and sustainable development of rural and mountain territories. Currently is collaborating at "FoxLab", a scientific initiative jointly operated by the National Research Council of Italy (CNR) and CRI-FEM, at MOUNTFOR a Project Centre on Mountain Forests hosted by CRI-FEM and with FEM "Fundraising Team". He is involved in initiatives (see "Flagship Forestry") and projects funded by EIT Climate-KIC. Since June 2017 is acting as a member of the EUSALP Action Group n. 6 in behalf of the Autonomous Province of Trento. In this framework is leading the project "ALPJOBs" (2018–2020) funded by the programme ARPAF of European Parliament and participating to other ARPAF projects dealing with forestry, medicinal aromatic plants and intelligent use of soil.



### SARA FAVARGIOTTI



Since 2017, Sara is Assistant Professor of Landscape Architecture and Architectural Design. Her research and teaching focus on the landscape of contemporary age with a design approach based on transformation and innovation. She is specialized in landscape urbanism and ecological design with a specific focus on emerging infrastructures and their influence on cities, landscapes, and territories. She has coordinated or collaborated in numerous research and teaching projects on landscape and urban transformations of contemporary territories such as: SATURN, Climate-KIC Innovation Ecosystems (2018–ongoing); Trento Urban Transformation, to support the Urban Plan review of Trento (2016–ongoing); Trento smart infrastructures. Blue and green solutions in the alpine regions, Climate-KIC Urban Challenge (2017–2018). Since 2018 she is member of the Directive Board of IASLA, Italian Academic Society of Landscape Architecture. She is author of the book *Airport On-hold. Towards Resilient Infrastructures* (Trento: LISt Lab, 2016).

### FRANCESCA FORNO



Francesca is an Associate Professor of Sociology at the University of Trento where she teaches Sociology and Sociology of consumption. Her research interests include political consumerism and sustainable community movement organizations. A special focus in these areas is on the consequences of the spread of market-based forms of action for citizens' participation and mobilization. She has published on civic participation and social movements, conducting research on political consumerism, collaborative consumption, grassroots initiatives on social eco-innovation and alternative food networks (AFNs). Her work has appeared in the following journals, among others: the *Annals of the American Academy of Political and Social Science*, the *Journal of Consumer Culture*, *International Journal of Consumer Studies*, *South European Politics and Society*, *European Societies*, *British Food Journal*, the *Annals of the Feltrinelli Foundation*, and anthologies published by Oxford University Press, Wiley-Blackwell, and Zed Books.

### ELISA MORGANTI



Elisa obtained a PhD in ICT and she worked as researcher in the field of microfluidics and microsystems. Since 2013, she has been dealing with the management of research and innovation project and knowledge transfer. She participated in several european ,national and local projects, carrying on successful collaboration with academic and industrial partners, decision makers, professionals and citizens. Elisa helped companies

interested in innovation with scouting and networking activities and supporting them in the submission of project proposal for funding opportunities. Since 2018, she has been working in the Strategic Projects area of Hub Innovazione Trentino.

### MICHELA ANGELI



Since June 2018 she works with the Communication Group of the Research and Innovation Center of Fondazione Mach dealing with the organisation and management of scientific and popular events, the updating of web content, the support for the execution of graphic and promotional products. She also collaborates in the management of the EIT projects as she worked for many years at University of Trento and Padua as Project Manager of research projects (Italian, EU and American).

### RICCARDA MOSER



Riccarda obtained a PhD in Economics and Management, her field of study was agricultural and environmental economics, consumer behaviour, applied discrete choice modelling. She is responsible for financial and administrative aspects of EU research projects (H2020, EIT Climate-KIC, EGCT-Euregio, LIFE 2014–2020, Interreg Alpine Space 2014–2020, Interreg Central Europe 2007–2013, FP7): from budget planning in the pre-award phase to the whole management of the funded projects, including reporting, consortium agreement and audit (with national and EU auditors).

### ANGELICA PIANEGONDA



Angelica Pianegonda is a research fellow at Department of Civil Environmental and Mechanical Engineering, DICAM, University of Trento, Italy, where she also graduated in 2019 in Construction Engineering and Architecture. During her Master Thesis she participated in TRE3 research project (funded by Fondazione Caritro) at National Research Council of Italy – Trees and Timbers Institute. She has been collaborating in the research project EIT CLIMATE-KIC SATURN 2018 (2019 – ongoing). Her research concerns landscape ecology, ecosystem services, sustainable urban development, bioeconomy and circular economy. She was also tutor of the classes of Industrial Drawing and Digital Modeling for Architecture.



UNIVERSITY  
OF TRENTO



FONDAZIONE  
EDMUND  
MACH

# EIT CLIMATE-KIC'S ROLE IN THE PROJECT



EIT Climate-KIC's mission is to catalyse systemic change through innovation in areas of human activity that have a critical impact on greenhouse gas emissions – cities, land use, materials and finance – and to create climate-resilient communities. This approach assumes strategy as a process of active learning and continual evolution. We see innovation and learning as two sides of the same coin: when leveraged together, they are the most effective means to catalyse transformation in the face of uncertainty. EIT Climate-KIC is then directly involved in the SATURN project to insure the continuity between the specific project's dynamics and the overall picture we are trying to address.

Our goal is to include the SATURN's outcomes into a larger informal Framework aiming to support cities in their delivery of climate and SDG targets by developing a programme and a city-rural coalition to help cities exchange and implement concrete action to improve the urban-rural relationship at different levels: suburbs, peri-urban and surroundings territories.

EIT Climate-KIC will bring into the project both its expertise on specific areas such as knowledge, capacity building or dissemination, and its Portfolio strategy to link SATURN with our Theory of Change.

## **KIM TWORKE** **EIT CLIMATE-KIC COORDINATOR**



After studying political science, Kim Tworke joined the European public-private partnership "EIT Climate-KIC" in 2012. For seven years, he worked to develop the French partnership. At the interface between renowned scientists and private decision-makers, he participated in the generalization of Open Innovation to the challenges of climate change. Recently, he became head of the French start-up acceleration program, and brings his expertise in new climate change markets to entrepreneurs with an innovative approach.

---

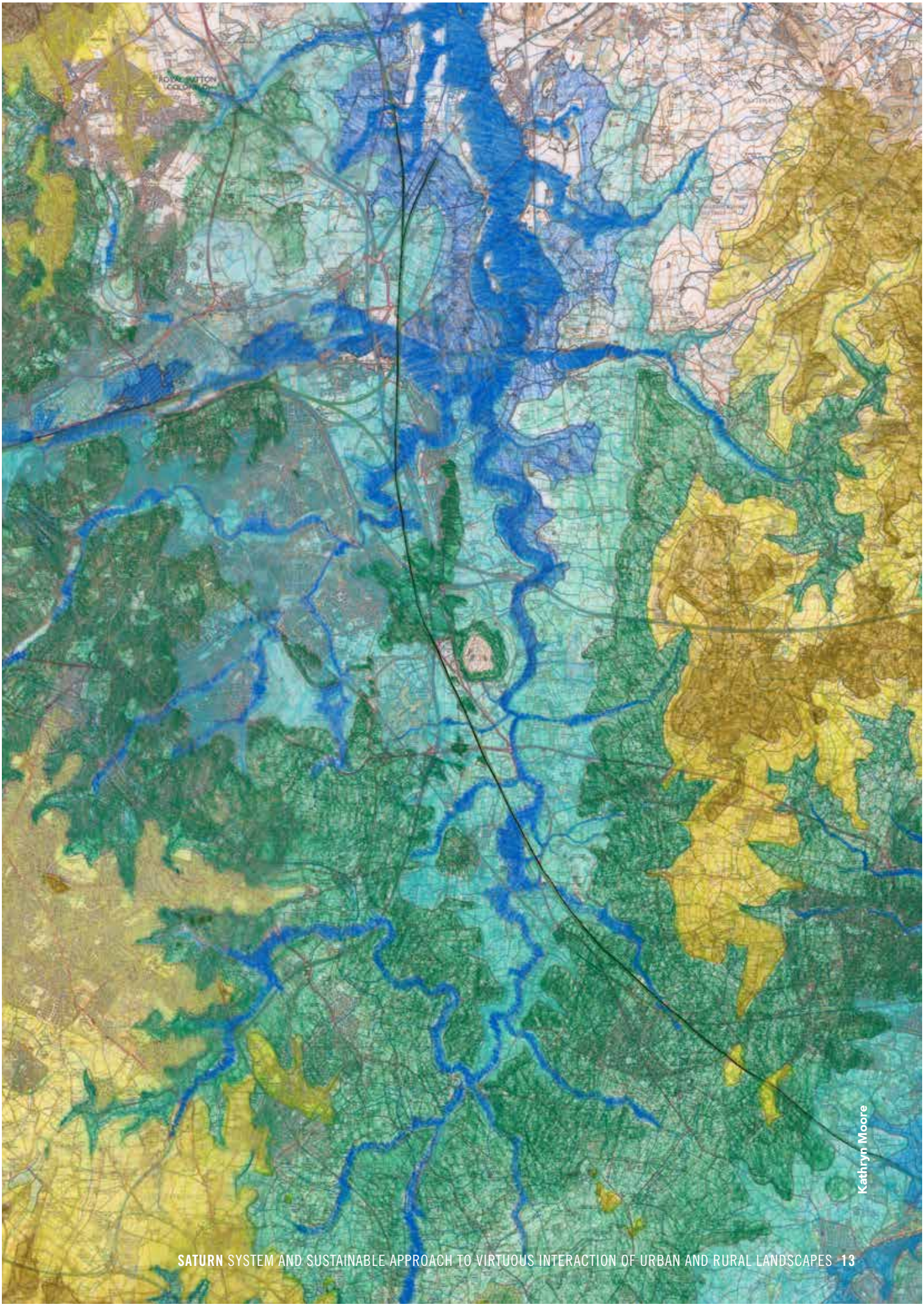
## **GET INVOLVED**

If you wish to get involved with the project or become a satellite city please contact any of your regional representatives in Trento, Birmingham, Gothenburg or the EIT Climate-KIC.

You can find more information about the project at:  
**<https://eventi.fmach.it/saturn>**

---







# CONFERENCE, WORKSHOP AND EXHIBITION

## 31 JULY – 1 AUGUST 2019

This two-day SATURN conference, exhibition and workshop, supported by Climate-KIC, is the first of a series of three international events being held by partners from Italy, Sweden and the United Kingdom. It is a significant opportunity to engage with our stakeholders and the wider public to explain the purpose of the project, to show what we have done so far and where we are heading. We would value your comments and support.

Launching the SATURN project, the overall aim of this event is to help put quality of life, health, well-being and climate change front and centre of the political agenda as an economically resilient proposition for future generations, delivering greater social and spatial democracy and quality of life. Environments in which to live, work and raise families.

Following on the success of the Landscape and Infrastructure conference held in June 2018, this event is accompanied by an exhibition in the Shell on the ground floor at ADM, BCU. The purpose of the exhibition is to make visible and spatial the geographical regions we are concerned with, demonstrating aspects of their culture, identity and landscape. It exhibits MA Landscape Architecture students work investigating the possibilities of the WMNP proposal in different locations and scales in the region and of impending sea level rise in Fairbourne, Wales.

---

**PUT QUALITY OF LIFE, HEALTH, WELL-BEING AND CLIMATE CHANGE FRONT AND CENTRE OF THE POLITICAL AGENDA AS AN ECONOMICALLY RESILIENT PROPOSITION FOR FUTURE GENERATIONS, DELIVERING GREATER SOCIAL AND SPATIAL DEMOCRACY AND QUALITY OF LIFE. ENVIRONMENTS IN WHICH TO LIVE, WORK AND RAISE FAMILIES.**

---

Our internationally accredited speakers will present aspects of the experience and materiality of landscape so often neglected or taken for granted in recent years including identity, a sense of belonging, soil, biodiversity and culture. We will also hear about the processes of operating at a macro and micro level to achieve the long term transformation of the Ruhr, a region of 53 cities, specifically relating to the role of vision, governance and stakeholder engagement.

August 1st is devoted to a workshop with the partners and their teams. The workshop provides the opportunity to deepen the relationships between the partners, for us to work face to face to refine the goals, develop in more detail the road map for the project, learn more about each other's territories, share concerns and aspirations and build on what has already become a strong collaborative partnership.

Examining the role of spatial visions to drive new agendas, in the workshop we will identify objectives, outcomes and principles that can be used in different contexts, scales and degrees of complexity to connect visions to policy and practice. Working across silos and disciplines we will investigate the potential of ecosystem services to go beyond the conventional scientific approach, develop a range of ways to engage stakeholders, from the scale of the garden and allotment to the wider region and increase dramatically the way we value land, water, soil, biodiversity, local food and traditional knowledge.

Please let us know if you wish to be kept informed through [bcu.ac.uk/catid](http://bcu.ac.uk/catid) and [@CATiDLandscape](https://twitter.com/CATiDLandscape).

### ACKNOWLEDGEMENTS

Projects were undertaken by the 2018/9 MA students of Landscape Architecture at BCU, tutored by Kathryn Moore, Russell Good and Sandra Costa.

#### Many thanks to:

Rob Colbourne  
Rachel Goddard  
Meng Hao  
Chantelle Harris  
Iris Ip  
Phil Smith  
Viet Trinh Tran  
Kika Vernon



# SPEAKERS

## ALESSANDRO GRETTER



Since 2008 is Technologist at Fondazione Edmund Mach (FEM). His research interests are on Human Ecology, Socio-Economic analysis of rural and mountain territories, landscape governance and sustainable development. In recent years he has been involved in design and coordination of various initiatives supported by EIT Climate-KIC, and act as the Lead of the Orchestrated Ecosystem Project SATURN (2018–2021).

## ANASTASIA NIKOLOGIANNI



Dr. Anastasia Nikologianni is qualified as a Landscape Architect MA and Agriculturist/Horticulturist MSc., and holds an EIT Climate-KIC labelled PhD in Landscape Architecture from Birmingham City University with regards to the role of low carbon, spatial quality and the contribution design can make to the development of regional landscape-based spatial strategies. Most of her recent research has focused on the extent to which spatial quality and low carbon can be delivered in regional landscape design as well as the way visual representations contribute to the design process.

## CHRIS J BOUCH



Chris Bouch is a Chartered Civil Engineer with a Masters in Railway Systems Engineering, who worked for 20 years in the design and construction industry before moving to academia and the University of Birmingham, where he is currently a Senior Research Fellow. Chris's research has focused on the application of systems engineering techniques and systems thinking to the exploration of liveable, sustainable and resilient future cities.

## KATHRYN MOORE



Kathryn Moore, Immediate Past President of the International Federation of Landscape Architects (IFLA) and Professor of Landscape Architecture at Birmingham City University has taken a lead role in redefining the relationship between landscape, culture and governance, finance, health and community engagement within the context of a radical proposal for a West Midlands National Park, launched in a major conference held in BCU in June 2018. She is a member of the Independent National

Design Review Panel for HS2, a contributor to the Government Commission to Review Landscapes, a founding partner for the World Design Summit and Director of the UK International Traditional Knowledge Institute.

## MERRICK DENTON-THOMPSON OBE FLI



Merrick Denton-Thompson is the Immediate Past President and Fellow of the Landscape Institute. He has worked in local government and the voluntary sector for all of his career. He left local government as the Assistant Director of the Environment at Hampshire County Council where he was responsible for environmental policies in strategic planning, rural affairs and the countryside service. He was appointed to the Board of Natural England by the Secretary of State to assist in the development of the new government agency in 2006–2009.

## MICHAEL SCHWARZE-RODRIAN



Michael Schwarze-Rodrian is the head of the Department European and Regional Networks and the EU Representative of the Regional Association Ruhr (RVR). He is a landscape planner who planned and implemented the Emscher Landscape Park. He moderates local and regional networks for a sustainable Metropolitan Ruhr. His great experiences with urban landscapes, integrated strategies and project management is the background of his European and international networking.

## MICHELE FARMER



Michele Farmer is the Prince's Trust Director for Central England, a region that stretches from the Welsh border to the Norfolk coast, from Bedfordshire in the South to North Lincolnshire. One of Michele's first tasks as Regional Director has been to open the new Prince's Trust Centre in Birmingham, providing a skills and enterprise hub for the next generation.

## NICK GRAYSON



Nick is Climate Change and Sustainability Manager for Birmingham City Council, with a current lead on green infrastructure and natural capital; where he has devised the 'Naturally Birmingham' policy which seeks to put nature at the heart of all decision-making, providing the framework for a 25-Year Environment Plan and the Future Operating Model for Parks.

# SATURN WORKSHOP 1 PROGRAMME

Birmingham City University, The Parkside Building, 5 Cardigan Street, Birmingham B4 7BD

## DAY ONE WEDNESDAY 31 JULY

### The Shell Parkside Building

**09.30–10.30** Stakeholders forum  
Registration and exhibition  
Light refreshments

### P350 Lecture Theatre, Parkside Building

**10.30–10.50** Welcome

**10.50–11.05** **Chair** – information on strategic scale in the UK  
**Merrick Denton-Thompson**

**11.05–11.20** Young people – considering the future  
**Michele Farmer**

**11.20–11.50** Keynote address:  
Integrated development of urban landscapes – basis for economic change  
**Michael Schwarze-Rodrian**

**11.50–12.15** Panel session, Q&A

### The Shell Parkside Building

**12.15–13.15** Networking lunch and exhibition

### P350 Lecture Theatre, Parkside Building

**13.15–13.45** An introduction to SATURN  
Overall **Alessandro Grette**  
Trento **Elisa Morganti**  
Gothenburg **Martin Berg**  
Birmingham **Nick Grayson**

**13.45–14.30** The Vision Framework  
**Kathryn Moore**

**14.30–15.00** Panel session, Q&A

### The Shell Parkside Building

**15.00–16.00** Drinks reception and exhibition  
Stakeholders forum

### P132 Parkside Building

**16.00–17.00** SATURN Vision workshop (partners only)  
**Kathryn Moore**  
**Anastasia Nikologianni**

**17.00–17.15** Break

**17.15–18.15** SATURN-partners meeting (invitation only)  
**Alessandro Grette**

**18.15** Day One close

## DAY TWO THURSDAY 1 AUGUST

### P131/P132 Parkside Building

**09.00–11.00** SATURN-partners spatial workshop

**09.00–09.15** Spatial assessment: Introduction  
**Nick Grayson**

**09.15–09.30** Gothenburg and Trento verbal confirmation of use of ecosystem  
Service mapping and visioning

**09.30–10.15** Birmingham spatial case study presentation

**10.15–11.00** Agree SATURN-partners methodology

### The Shell Parkside Building

**11.00–11.20** Refreshments and exhibition

### P131/P132 Parkside Building

**11.20–13.00** SATURN-partners systems workshop

**11.20–11.35** Systems introduction **Chris Bouch**

**11.35–11.45** Gothenburg and Trento verbal confirmation of use of systems mapping

**11.45–12.15** Birmingham systems case study presentation

**12.15–12.30** Climate-KIC systems tool  
**Anastasia Niologianni**

**12.30–13.00** Agree SATURN-partners methodology

### The Shell Parkside Building

**13.00–13.45** Networking lunch and exhibition

### P131/P132 Parkside Building

**13.45–15.00** SATURN partners to agree 3-step framework

**13.45–14.00** Introduction to 3-step framework

**14.00–14.30** SATURN partners to draft their action plans

**14.30–14.45** SATURN partner A:  
Next steps presentation

**14.45–15.00** SATURN partner B:  
Next steps presentation

**15.00–15.15** SATURN partner C:  
Next steps presentation

### The Shell Parkside Building

**15.15–15.45** Final refreshments and dismantle exhibition  
SATURN partners depart

 [eventbrite.co.uk/e/saturn-workshop-tickets-64364709579](https://eventbrite.co.uk/e/saturn-workshop-tickets-64364709579)

 @CATiDLandscape @SClimatekic #NationalParkWM #SATURNLandscape #CATiDLandscape

[bcu.ac.uk/catid](http://bcu.ac.uk/catid) • [birmingham.gov.uk](http://birmingham.gov.uk) • [eventi.fmach.it/saturn](http://eventi.fmach.it/saturn)