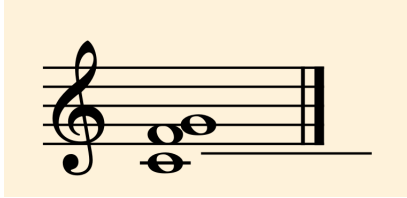


Strings - In This Moment... June 23rd version

Part I

- **Strings** open with **drones** on C F & G



Prerecorded audio:

(30 seconds, move on from drone after cue from Shifra)

Strings:

- Move into **Bass Line** in C



Choir:

Sung 2x

Water pumps failed Buildings baked like ovens Cars and buses boiled Roads and railways buckled

Prerecorded audio:

*(45 seconds, **stop** playing bass line at cue from Shifra)*

Choir:

Why? Why? Why?

Strings:

- **Violin** can start playing melody for *We Are inside, we are outside* in C
- **Viola** continues with bass line



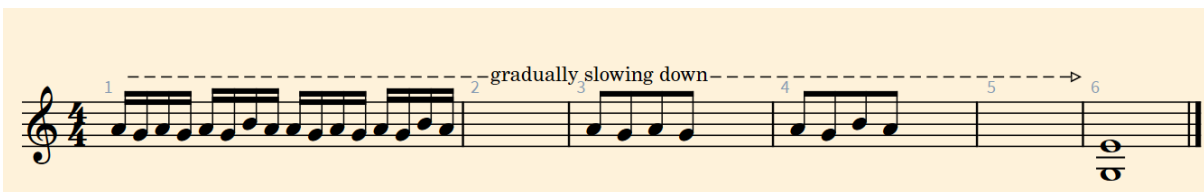
Prerecorded audio:

(45 seconds, **transition to part II** at cue from Shifra)

Strings:

Transition to part II

- Gradually speed up until the melody & bass line become a mess of incomprehensible notes (adding other pitches/scratches/squeaks during this acceleration is encouraged)
- Once we've arrived at the fastest speed - transition into the melody for **Grabbing Groceries, Medication** gradually slowing down and landing on an A major drone to prepare singers for **I'm Willing**



Part II

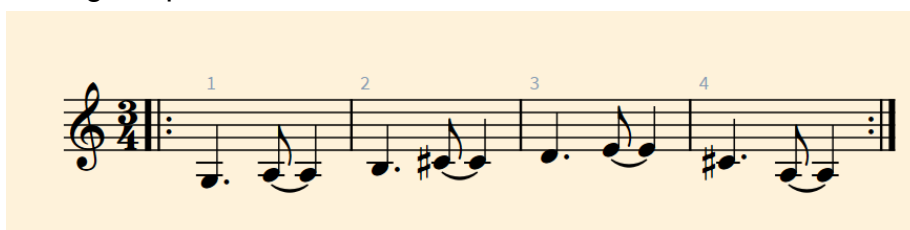
Choir:

-

I'm Willing Wherever I can, I'm willing wherever I can.

Strings:

- Play the **I'm Willing Wherever I can** bass line - gradually speeding up and shifting tempi



Choir:

Grabbing Groceries, Medication Sung slow -> fast

Strings:

- Continue working within **I'm Willing Wherever I can** bass line's pitch material - shifting tempo & meter. Find polyrhythms to lock into whenever possible

Choir:

I know this is an uncertain time

Grabbing Groceries, Medication

Strings:

- Land on D major drones to prepare for Part III



Part III

Strings

- Continue drone in D with subtle shifts of timbre & pitch - quote/respond to voices singing part III melodies

Choir:

I'm back home, and I'm here
I'm back home and I'm here

One is snow and one is sun
One is snow and one is sun

Strings:

- Begin playing *We are outside* **Melody** in D



Choir:

We are outside, and we are inside - (continue until fade out)

Strings:

- **Viola** moves to *We are outside* **Bass Line** in D
- As the choir slowly unsyncs from itself - gradually slow down *We Are Outside* music until it is moving at a glacial, drony pace. **Fade out at cue from Shifra**