

## REPORT

---

# MELODIC MAP: EXPLORING BERLIN'S MUSICAL LOCATIONS

---

Sofia Anassa Theodorou (484087)  
Luise Henriette Klemp (463759)  
Loreta Vrapı (451149)  
Nargis Rezai (411830)  
Başak Atalay (473166)  
Jonas Henning (463764)

July 6, 2023

# Contents

Abstract	1
Introduction	2
The Role of Music in Shaping Soundscapes	3
Methodology	4
Decoding the Survey: Insights from Data Analysis	5
Intentions	7
Project Progress and Analysis	8
Presentation Formats	14
Conclusion	15

## Abstract

This report presents an outline of our project focused on constructing a map showcasing the diverse musical venues in Berlin and making it easily accessible to the public through a dedicated website, integrating various elements related to music consumption preferences and behaviors. A survey was conducted among a sample of around 300 participants (as of July 6th), students of Technical University Berlin to gather relevant information. The report discusses the methodology employed, data collection, and analysis techniques, and provides insights into the musical landscape of Berlin. The results shed light on the preferences, trends, and behaviors of the surveyed students regarding music-related experiences, providing valuable information for individuals seeking to explore the city's diverse musical offerings. The project highlights the importance of understanding various dimensions of music consumption and provides a valuable resource for mainly students, but also residents and visitors alike in navigating the vibrant music scene of Berlin.

## Introduction

Music serves as a powerful medium that connects people, transcending boundaries and shaping cultural experiences. Understanding the preferences and habits surrounding music consumption is essential for creating an inclusive and vibrant environment. With this objective in mind, a survey was conducted to delve into the music consumption patterns and preferences of the diverse community at Technical University Berlin.

The purpose of this study is to present a comprehensive analysis of the survey findings, shedding light on the musical landscape at TU Berlin and uncovering key insights into the music consumption habits of its students and faculty members. By examining various aspects such as age, gender, preferred music genres, musical venues, atmospheres, safety perceptions, residential districts, age demographics of fellow visitors, and spending habits, we aim to gain a deeper understanding of the music-related behaviors and preferences within the TU Berlin community.

## The Role of Music in Shaping Soundscapes

Soundscape refers to the auditory environment or the collection of sounds that surround us in a particular location or setting. It encompasses all the audible elements, both natural and human-made, that contribute to the overall acoustic experience of a place. This includes sounds such as birds chirping, traffic noise, voices, wind rustling through trees, and more.

While music is not the sole defining factor of a soundscape, it can significantly influence and shape the overall auditory experience of a particular environment. Music, with its deliberate arrangement of tones, rhythms, melodies, and harmonies, has the power to evoke emotions, set moods, and create specific atmospheres.

In some instances, music plays a central role in defining a soundscape. For example, in a concert hall, the primary focus is the musical performance itself, and the space is specifically designed to optimize the acoustics for the audience's auditory pleasure. The music becomes the dominant sound element, contributing to the overall soundscape of the concert hall.

Similarly, in a bustling urban environment, music can be an integral part of the soundscape, coexisting with other sounds like traffic, street vendors, and people's conversations. It can be heard from street performers, cafes, or even individuals listening to music through their personal devices. In this context, music becomes a part of the sonic tapestry that shapes the character and ambiance of the cityscape.

Moreover, music can also influence our perception of a place or evoke associations and memories tied to specific locations. For instance, hearing a particular song might transport us back to a specific time or trigger memories of a particular setting, thus adding an extra layer of meaning and connection to the soundscape.

However, it is important to note that while music can be a significant contributor to a soundscape, it is not the sole determinant. The soundscape is a multidimensional concept that encompasses a wide range of sonic elements, including natural sounds, ambient noise, environmental sounds, and human activities. These various components interact with each other, creating a dynamic and complex auditory environment that defines the soundscape of a particular place.

In summary, a soundscape is defined as the auditory environment that encompasses all the sounds present in a given location or setting. While music can have a profound impact on the overall soundscape, it is just one element among many that contribute to the acoustic experience. The soundscape is a multifaceted concept that encompasses natural sounds, human activities, ambient noise, and more, creating a rich tapestry of influential auditory stimuli.

## Methodology

In order to collect data, we initiated the distribution of a survey among a representative sample of TU Berlin students and faculty members. Participants were asked a series of questions covering multiple dimensions of their music consumption habits.

The survey comprised a range of questions that covered various aspects, including participants' age, gender identification, preferred music genres, favored musical venues, perceived atmosphere, safety perceptions, residential districts, age demographics of fellow visitors, and the amount of money individuals were willing to spend for a visit to such venues.

By collecting and analyzing responses to these questions, we hope to uncover valuable insights into the preferences, trends, and behaviors associated with music consumption at TU Berlin, which can be included and transferred to our melodic map.

The survey seeks to address important research inquiries: What are the predominant music genres favored by the TU Berlin community? Which musical venues are most popular among students and faculty? How do individuals perceive the atmosphere and safety at these venues? Are there variations in music consumption preferences based on factors such as age, gender, and residential districts? Furthermore, by exploring the monetary aspects, we aim to understand the value placed on music-related experiences at TU Berlin.

## Decoding the Survey: Insights from Data Analysis

In the following, the reasoning behind the chosen survey questions will be elucidated.

### 1. How old are you?

This question aims to establish a potential correlation between age groups, willingness to spend money, preferred musical genres and musical location, while simultaneously providing universal applicability.

### 2. Which gender do you identify with?

The decision to include gender rather than race or heritage in our survey was based on several factors such as focus on specific research objectives, complexity of data analysis, and promotion of gender diversity and inclusiveness.

### 3. Which music genres do you listen to the most?

Including genres as a survey question helps us deduce the preferred listened-to musical categories while simultaneously serving as a main categorizing/selection tool for our future map design. Further, we intend to adapt the map as well as possible to the statistical favorites of the TU students.

### 4. Which musical venue(s) in Berlin do you prefer to visit?

Collecting data about specific locations TU students favor to visit in Berlin is crucial for a user adapted cartographic approach on musical locations and data analysis.

### 5. What is the atmosphere like there?

The inclusion of such a question aims the purpose of capturing subjective impressions and experiences of individuals regarding the ambiance in order to understand the overall vibe.

6. How safe do you feel there?

The purpose of this question is directly linked to the individual perception and vibe of a musical location. Moreover, a connection between gender and safety might be detected.

7. How old are the other visitors there?

This data assists in gaining insights into the age composition of the audience frequenting these venues, which helps in understanding the target audience and tailoring the map with essential information to suit the preferences and interests of specific age groups.

8. In which district do you live?

Incorporating such a question allows us to comprehend the residential patterns of the audience creating a more focused/localized map and highlighting musical locations that are conveniently accessible to individuals allocated in different districts of the city.

9. How much money (in €) are you willing to spend for a visit there?

Financial capacities and spending-tendencies play a fundamental role while choosing a musical setting to attend, especially impacting most university students. Furthermore, potential connections between preferred music locations, age groups, gender, and listened-to music genres might be discovered and analyzed.



## Intentions

Our intention is to provide a comprehensive analysis of the survey results, utilizing statistical tools and visual representations to effectively showcase the patterns and trends observed in the data.

The findings from this survey hold potential implications for the TU Berlin administration, student organizations, event planners, and researchers interested in understanding and enhancing music-related experiences at the university. Additionally, the insights gained from this report may contribute to broader discussions on the sociocultural aspects of music consumption within an educational setting.

In addition to our survey results, we recognize the significance of providing valuable supplementary information to our audience. Consequently, we aim to meticulously document the music genres offered at each venue, along with pertinent details such as admission prices, operating hours, accessibility options through public transportation, and the minimum age requirements for entry.

To ensure the accuracy and comprehensiveness of this information, we will diligently conduct online research, observe the places and personally reach out to each venue.

## Project Progress and Analysis

Up until now, we have been carrying out surveys with students for a duration of 3 weeks.

Incorporating the preferences of TU students into our future map design is of utmost importance. To achieve this, the question "Which music genres do you listen to the most?" was included in the survey. This deliberate inclusion of genre preferences serves a dual purpose. Firstly, it allows us to gather valuable insights into the preferred musical categories among the participants, providing us with a comprehensive understanding of their listening habits. Secondly, it acts as an essential categorizing and selection tool for our future map design.

By analyzing the responses to the genre-question, the genres that have garnered significant attention can be identified. We acknowledge, that not all genres will have an equal representation, as individual musical preferences can vary greatly. Therefore, to ensure a representative and telling analysis, the frequency of mentions for each genre was taken into consideration.

In order to provide a more purposeful comparison, genres with only one or two mentions have been excluded. While TU students' fruitful and broad musical taste is important to us, focusing on genres that have received a notable number of mentions allows us to identify the dominant and popular genres among the respondents. These genres will serve as the foundation and orientation for our future map design, ensuring that it resonates with the majority of TU students and accurately reflects their musical preferences.

Our intention is to adapt the map in such way that it aligns with the statistical favorites of TU students as closely as possible. By incorporating their preferred genres into the map design, we aim to create an immersive and engaging cartographic music experience that caters to the diverse tastes and interests of the student body. The gathered data from the survey represents the genres that received a notable number of mentions:

Pop	148
Rock	131
HipHop	131
Rap	124
Techno	101
House	75
Electronic	74
Classical	70
Jazz	61
Metal	53
Indie	16
Schlager	12
Punk	12
Reggae	12
Soul	11

Table 1: Numeric Analysis of Music Genre Preferences

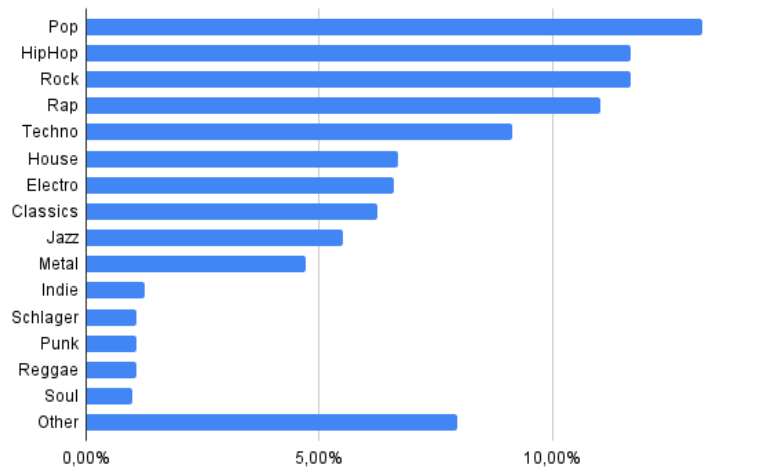


Figure 1: These figures reflect the popularity of the depicted genres in percent. It is important to note that there were other genres mentioned, which will be taken into account for the map, but were accumulated to provide a clearer comparison among the more frequently mentioned genres.

On a different note, our research findings provide evidence suggesting that the distribution of male, female, and non-binary participants in our survey aligns with the overall gender distribution at the university. The graphics clearly illustrate how closely our survey's distribution of participants' genders resembles the data from TU during the summer semester of 2022.

The under-representation of non-binary people in official data sets can be attributed to various factors f.e.: limited response options in data collection methods, social stigma, and concerns about privacy.

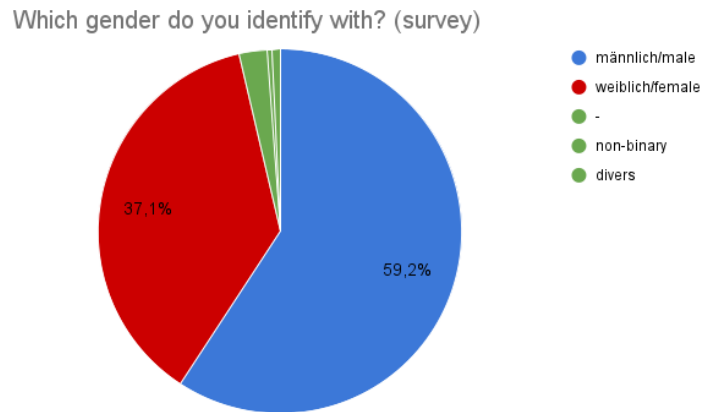


Figure 2: Graphical representation of gender distribution in our survey

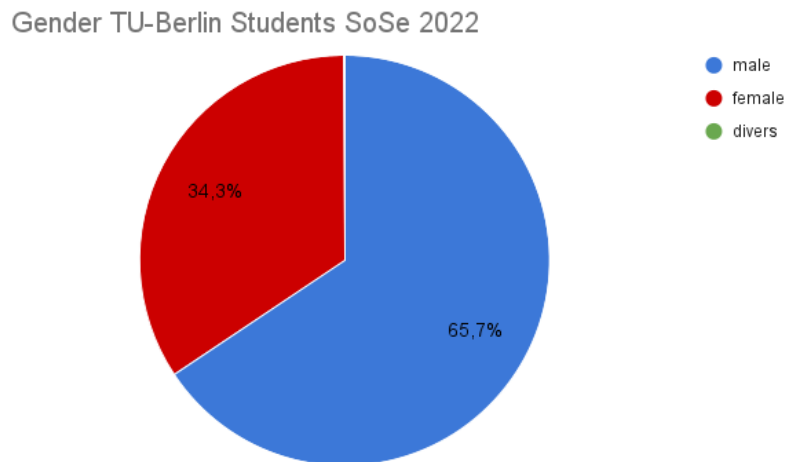


Figure 3: Graphical representation of the official gender distribution at TU

Based on our collected data so far, we can also make statements about students' willingness to spend money. Male students, on average, are more willing to spend money than female students. In both groups, the median for the amount most people are willing to spend is less than 20€.

How much money (in €) are you willing to spend for a visit there?

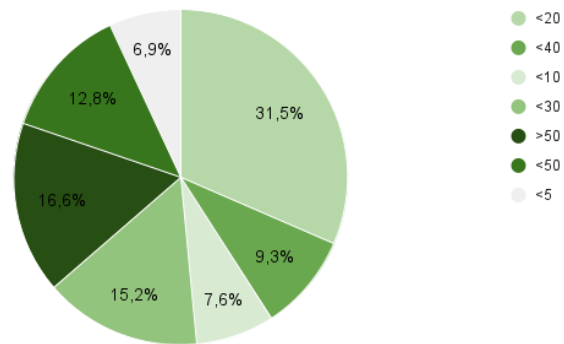


Figure 4: Expenditure on Musical Avenues

How much money (in €) are you willing to spend for a visit there? (female)

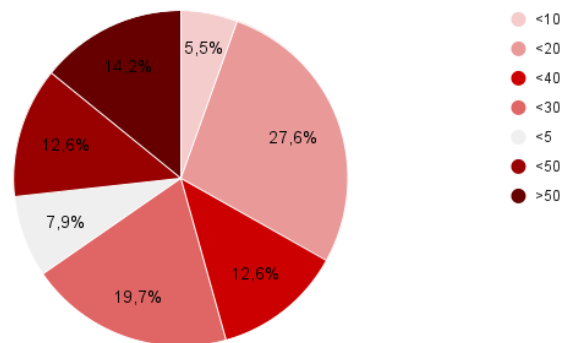


Figure 5: Female Expenditure on Musical Avenues:

How much money (in €) are you willing to spend for a visit there? (male)

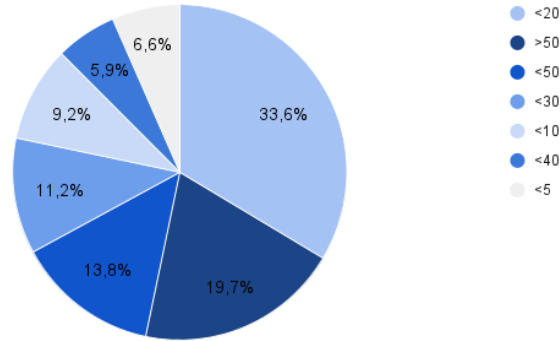


Figure 6: Male Expenditure on Musical Avenues:

Furthermore, it has been observed that the majority of respondents feel secure at their favorite places, which can easily be attributed to the fact that these places are their favorites. In our study, we aimed to analyze the safety perceptions of participants when visiting certain musical venues and understand gender-specific preferences for visiting places. Examining gender-related data would provide valuable insights into disparities and preferences related to safety and venue choices.

We have also found that, on average, men feel more secure than women, which can be linked to social imbalances.

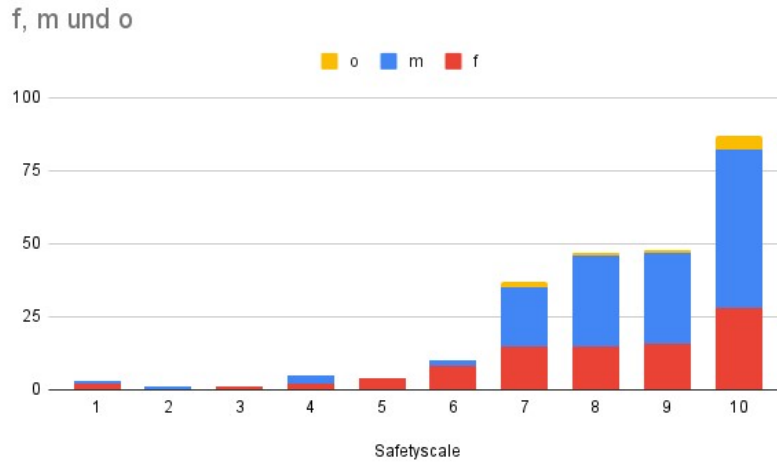


Figure 7: Perceived Safety Levels by Gender: Respondents' Ratings on a Scale of 1-10

While we aspire to gather as many datasets as possible, we do not have a specific numerical target in mind. Our primary objective is to ensure a comprehensive and unbiased collection of data from various sources at TUB. By adopting an inclusive approach, we aim to obtain a diverse range of information that will contribute to the richness and depth of our research. Our focus lies on the quality and relevance of the datasets rather than setting rigid quantitative goals. This approach allows us to prioritize the accuracy and reliability of the information gathered, ultimately enhancing the overall value and validity of the project.

## Presentation Formats

We have devised a comprehensive plan to present our findings in three distinct formats, focusing on the topic of mapping, including sonic cartographies, walking and listening trajectories, and forms of counter-mapping. Our goal is to provide a multifaceted exploration of these themes.

To achieve this, we aim to create a map with three different uses:

Firstly, we will produce a meticulously designed map, resembling a city plan, that showcases all the venues. This map will be accompanied by a legend, providing a detailed breakdown of the individual investigation points.

Secondly, we will develop an interactive digital city map. This open map will serve as a hub, offering convenient links to each venue, our survey results, and audio samples for an immersive experience.

Moreover, we have devised an innovative approach by planning to create a tangible, touch-sensitive map integrated with illuminating lights beneath the surface. Each venue will be represented by a lamp that will illuminate upon touch, accompanied by a synchronized playback of relevant audio recordings, further enhancing the sensory engagement for each location.



## Conclusion

In conclusion, this report has presented the project’s objective of creating an accessible map showcasing the diverse musical venues in Berlin on paper and through a dedicated website. The survey conducted among students at Technical University Berlin has yielded and will continue to yield valuable insights into the music consumption patterns, preferences, and behaviors within the TUB community.

The findings provide valuable information on music genres, favored venues, atmosphere and safety perceptions, residential districts, age demographics of visitors, and spending habits. This project emphasizes the significance of understanding various aspects of music consumption and offers a valuable resource for students, residents and visitors alike to navigate Berlin’s dynamic music scene.

Overall, this project is going to serve as a valuable resource for individuals seeking to explore Berlin’s music offerings. With its comprehensive map, detailed venue information, and insights into music consumption preferences, the project showcases the city’s vibrant musical landscape.

While there is still substantial work ahead, including completing remaining questionnaires, analyzing collected data and creating maps, we are optimistic that the data gathered thus far, along with implemented improvements, will enable us to approach these tasks with increased efficiency and thoroughness.