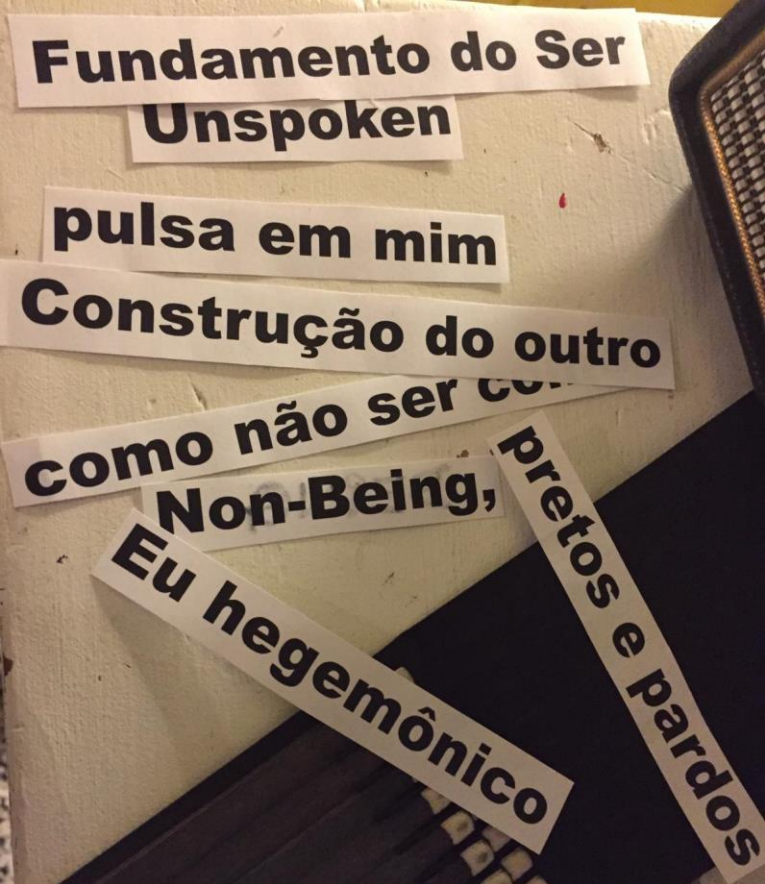




MOODBOARD

Kalunga Entities Kalunga Unspoken Kalunga Extended



an intertwined performance - installation.
co - ontologies operating in the same space.
at the same time.



a performance - installation of entities, unspoken and extended perspectives of Kalunga.

Kalunga.
the water archive.
the earth archive.
systems of communication.
places of transition.
states of becoming.



Inspiration for costume and textile





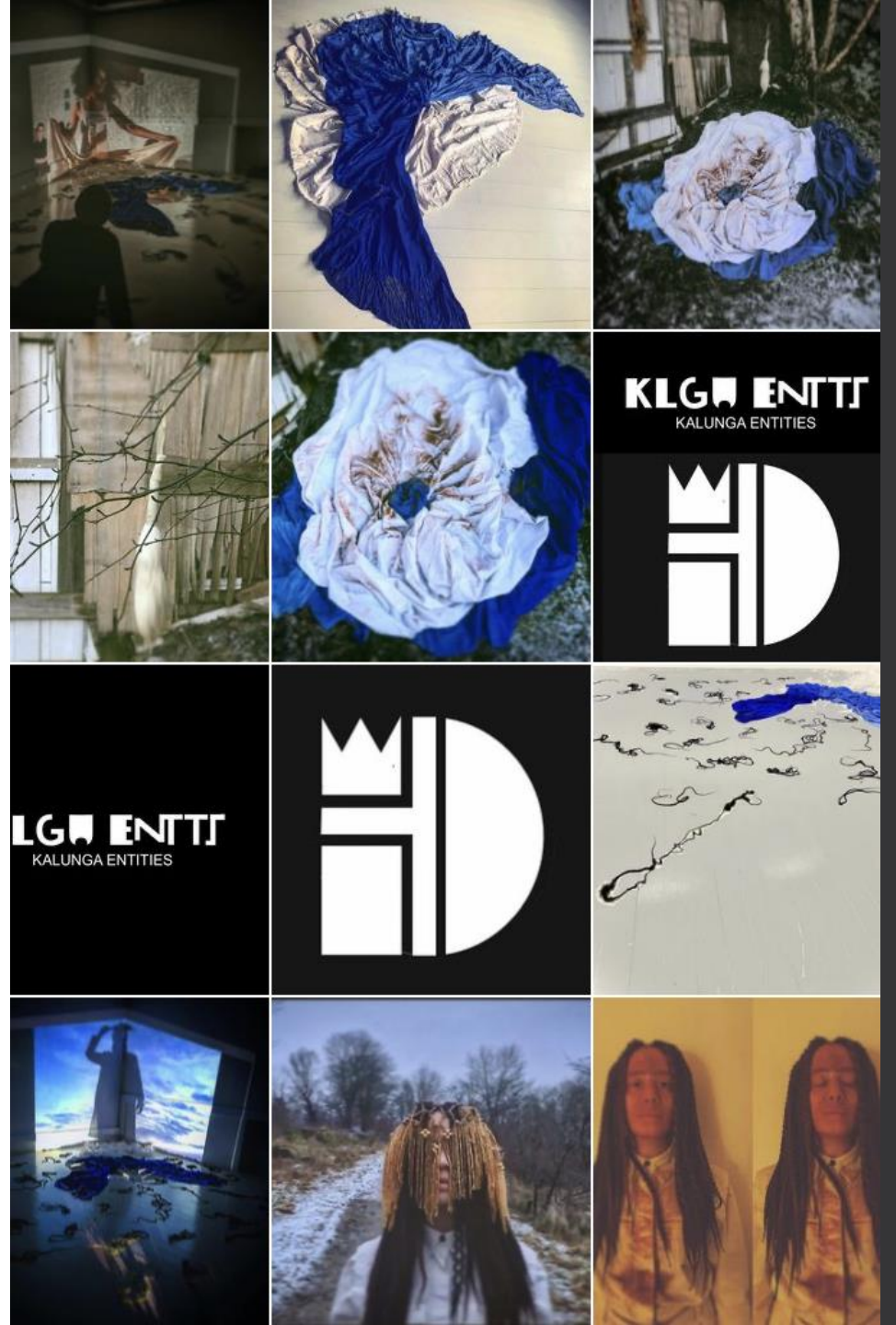
afropunk



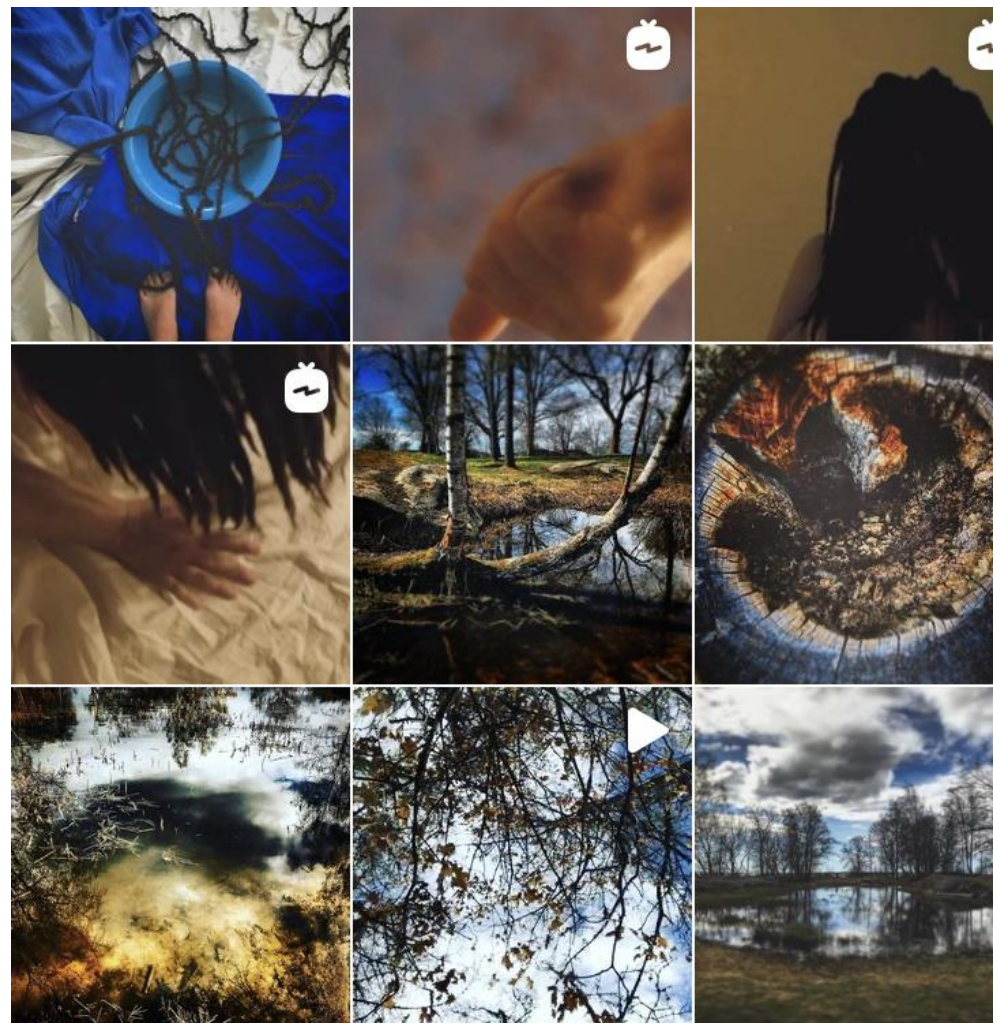
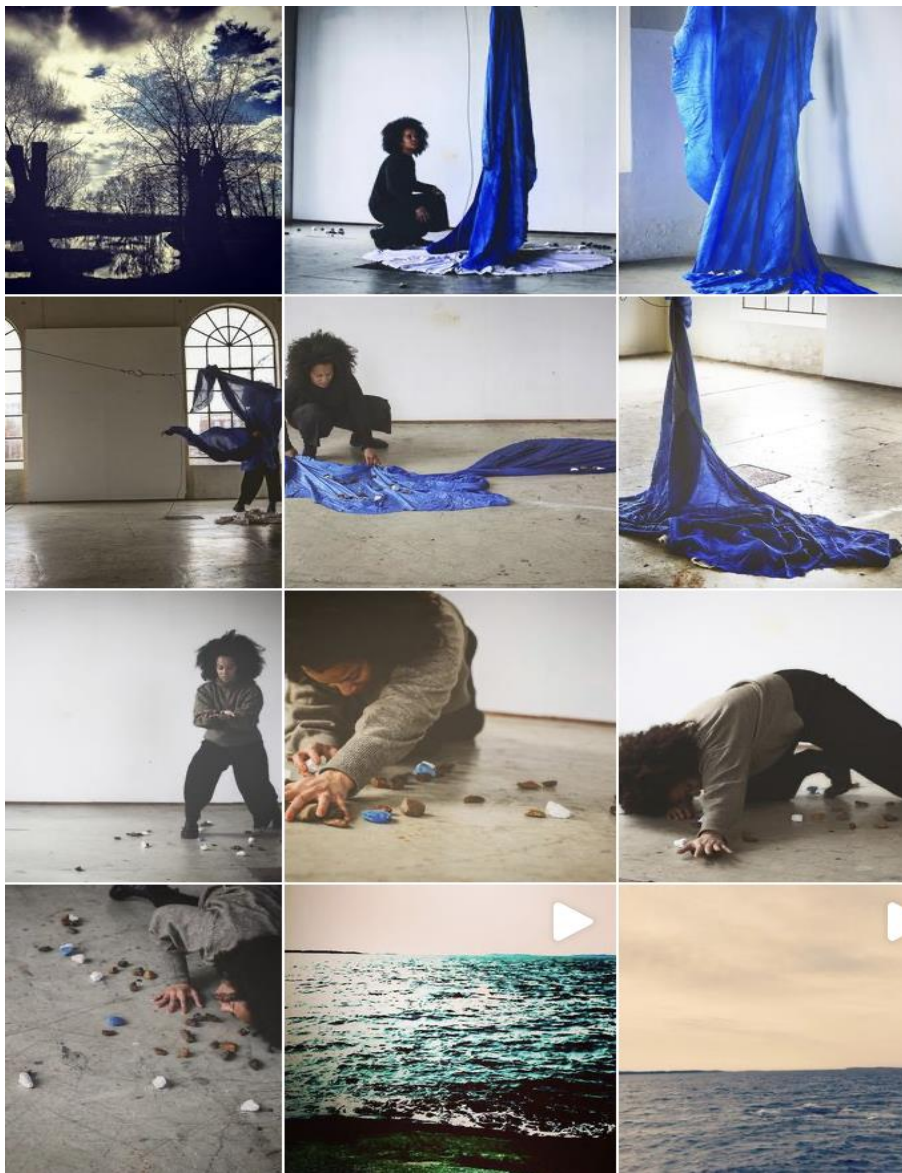
Parangolé

visual scrapbook.platform//instagram//[@map_luacaja](https://www.instagram.com/map_luacaja)

SEVERAL LONG, FULL SKIRTS, FABRICS, OBJECTS, ALTERNATE BETWEEN BEING WORN AS COSTUMES AND USED AS ENTITIES OF THE INSTALLATIONS.











INSPIRING USES OF PROJECTIONS AND LIGHT



Possible location to host the
Performance - Installation



The “Boathouse” is a heritage building with boat-building activity going back 100 years on the island of Isegran which is a living coastal culture park and a centre for the dissemination of traditions, history and experiences. Boats are restored in the same buildings they were once built in. Isegran is also a museum port with a beautiful sight of traditional boats along the banks, most in private ownership.

The beautiful island that lies in the centre of Fredrikstad, in the river Glomma, and can be reached via Kråkerøy Bridge or by the free City Ferry.

Isegran is the first place in Fredrikstad mentioned in history. The earl of Borgarsyssel, Alv Erlingsson, also known as MindreAlv, had a small fortress on Isegran in the late 1200s. In the 1670s the island was fortified with a large battery platform, Isegran's tower and later a small fort was built to protect the river. Until 1680, Isegran was Norway's only naval port.

From 1905 Fredrikstad had Norway's largest fleet of wooden boats. Around 600 sailing ships had Fredrikstad as their hometown at this time. <https://www.maritime-center.no/>





LUANDA CARNEIRO JACOEL

Performance Artist - Attending Master in Performance at the
Norwegian Theater Academy

luandacj@gmail.com

Body (in) Transit

@map luacaja