

Engendering eco-connectedness in design practice through diffractive engagement in place.

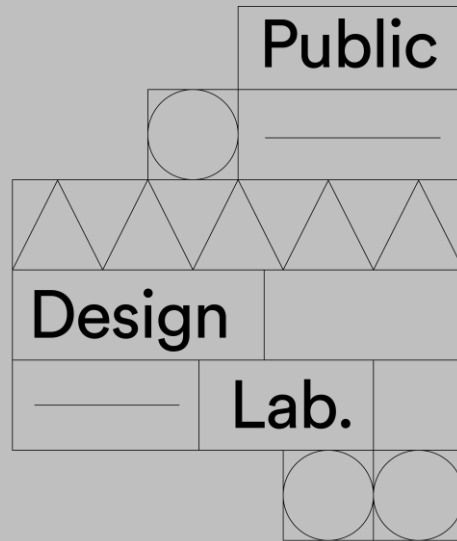
Clyde Doyle PhD

clyde.doyle@iadt.ie

Film EU Doctoral Summer Seminar - 2023

**Institute of
Art, Design +
Technology
Dún Laoghaire**

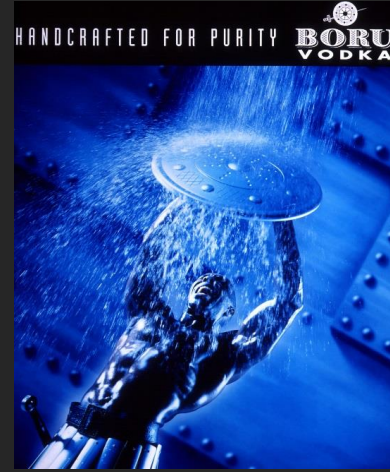
- Introduction
- Rationale
- Theoretical Framework
- Methodology + Design approach
- Sensory Mapping Tool + Tests 2022/23
- Insights
- Timeline/Next Steps



**Institute of
Art, Design +
Technology
Dún Laoghaire**


MA Design for Change

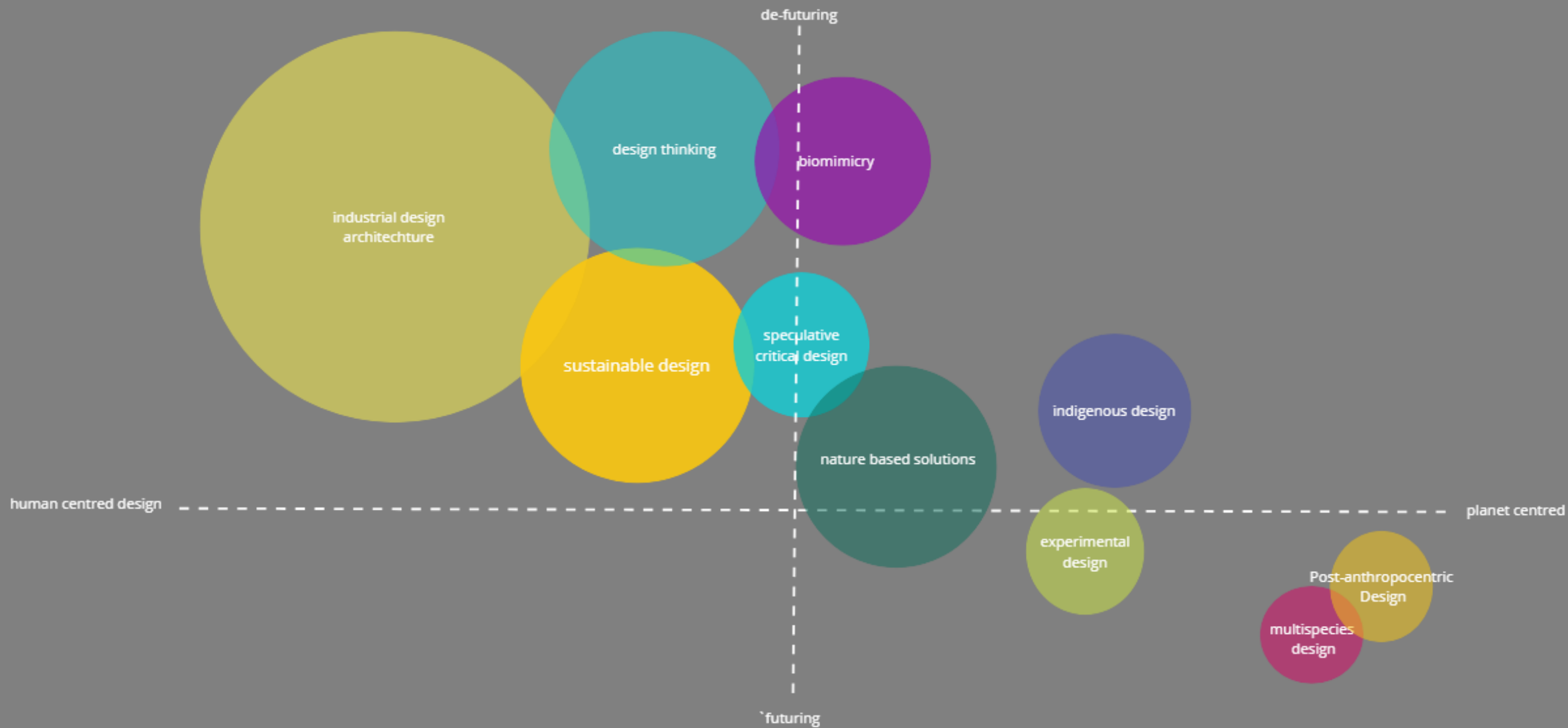






WHAT AM I DOING?

- 
- Design PhD
 - **NCAD**
 - Part-time
 - Research through practice
 - Year 4 of 5 (or maybe 6?)
 - Ecological Design - Post-anthropocentric design



unresolved map of design paradigms - clyde doyle 2022

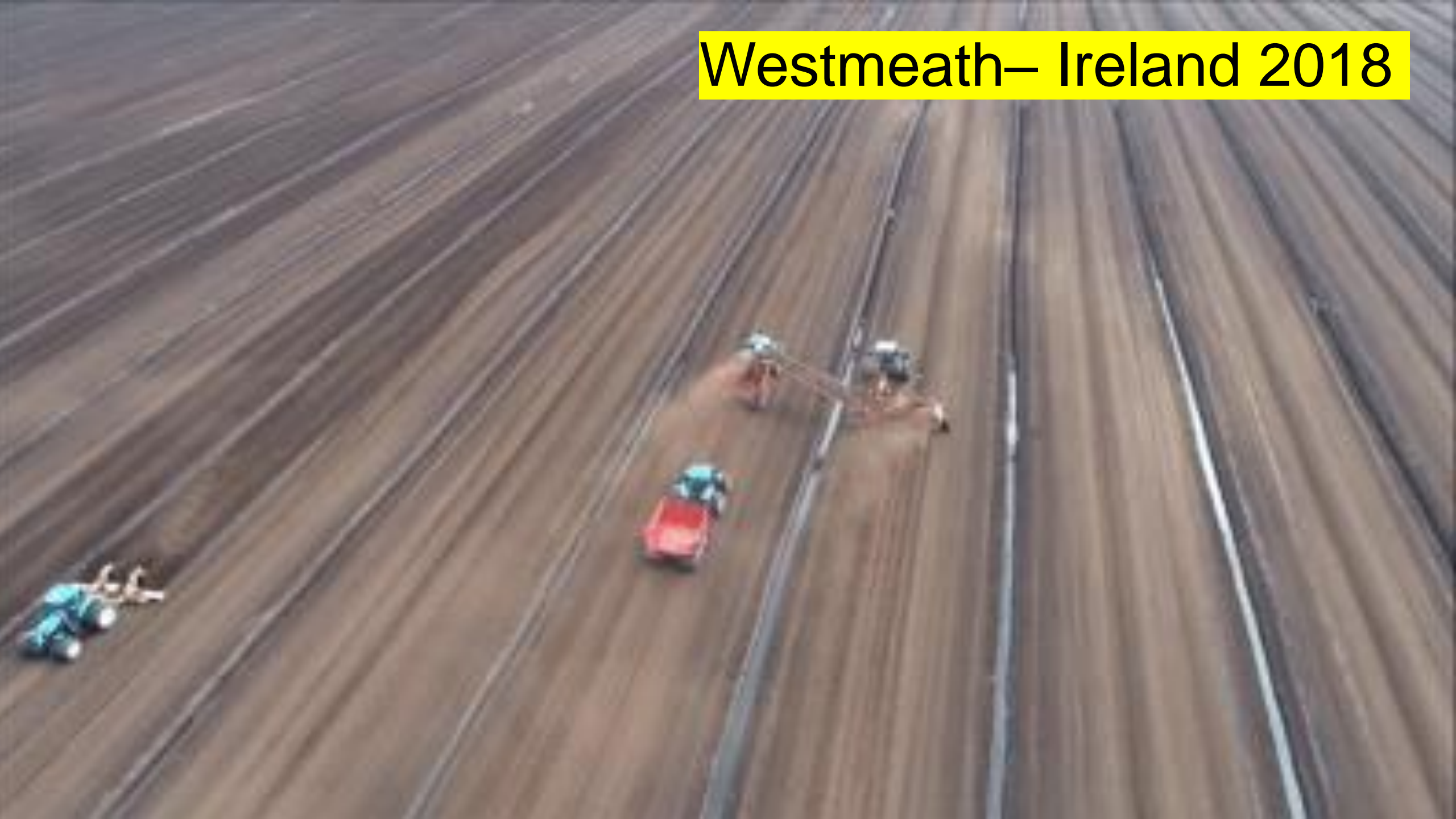
RATIONALE

Amazon forest 2019

Nova Bandeirantes · August 19, 2019 · 11:47 AM

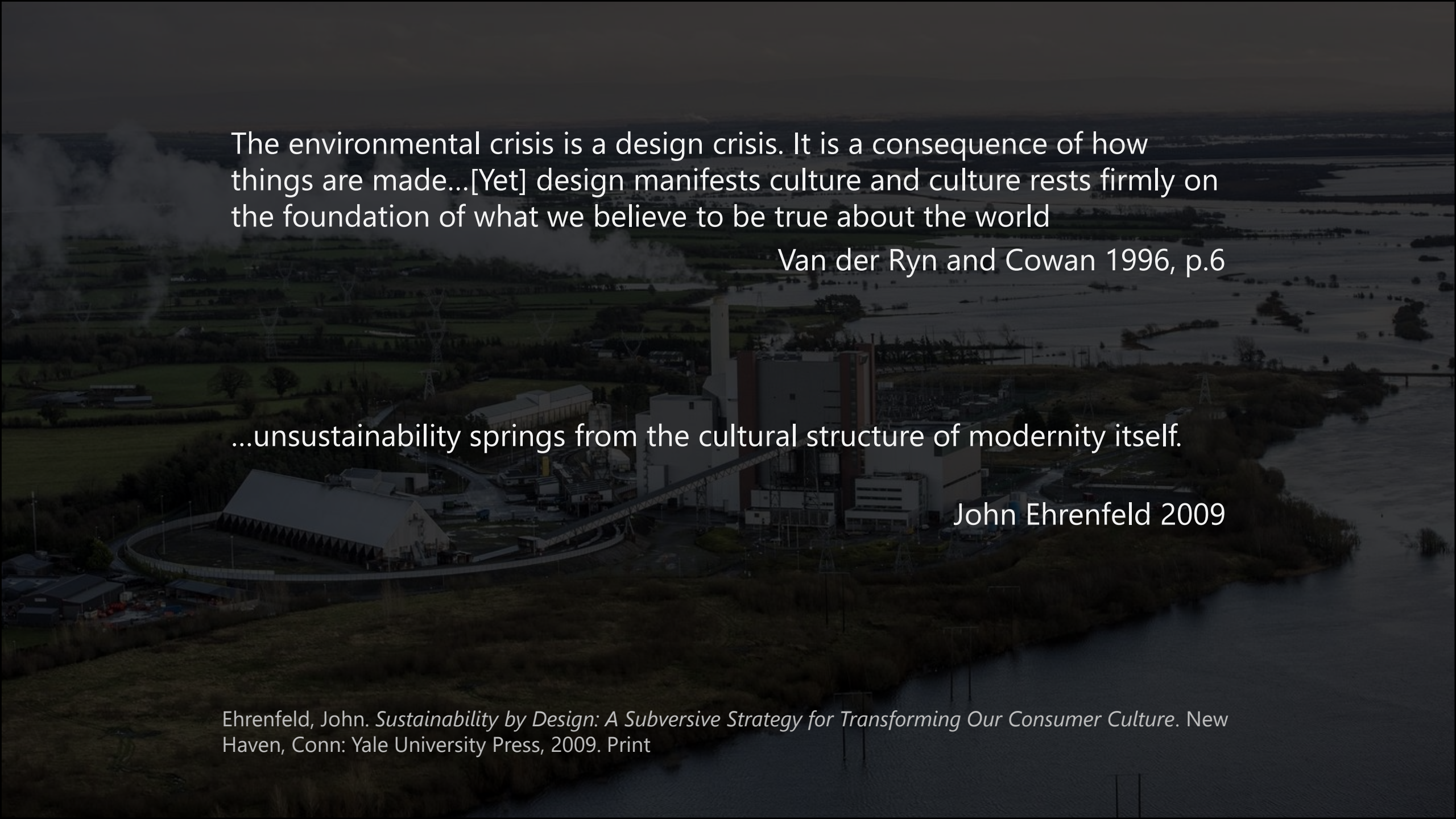


Westmeath– Ireland 2018



Offaly, Ireland 2023





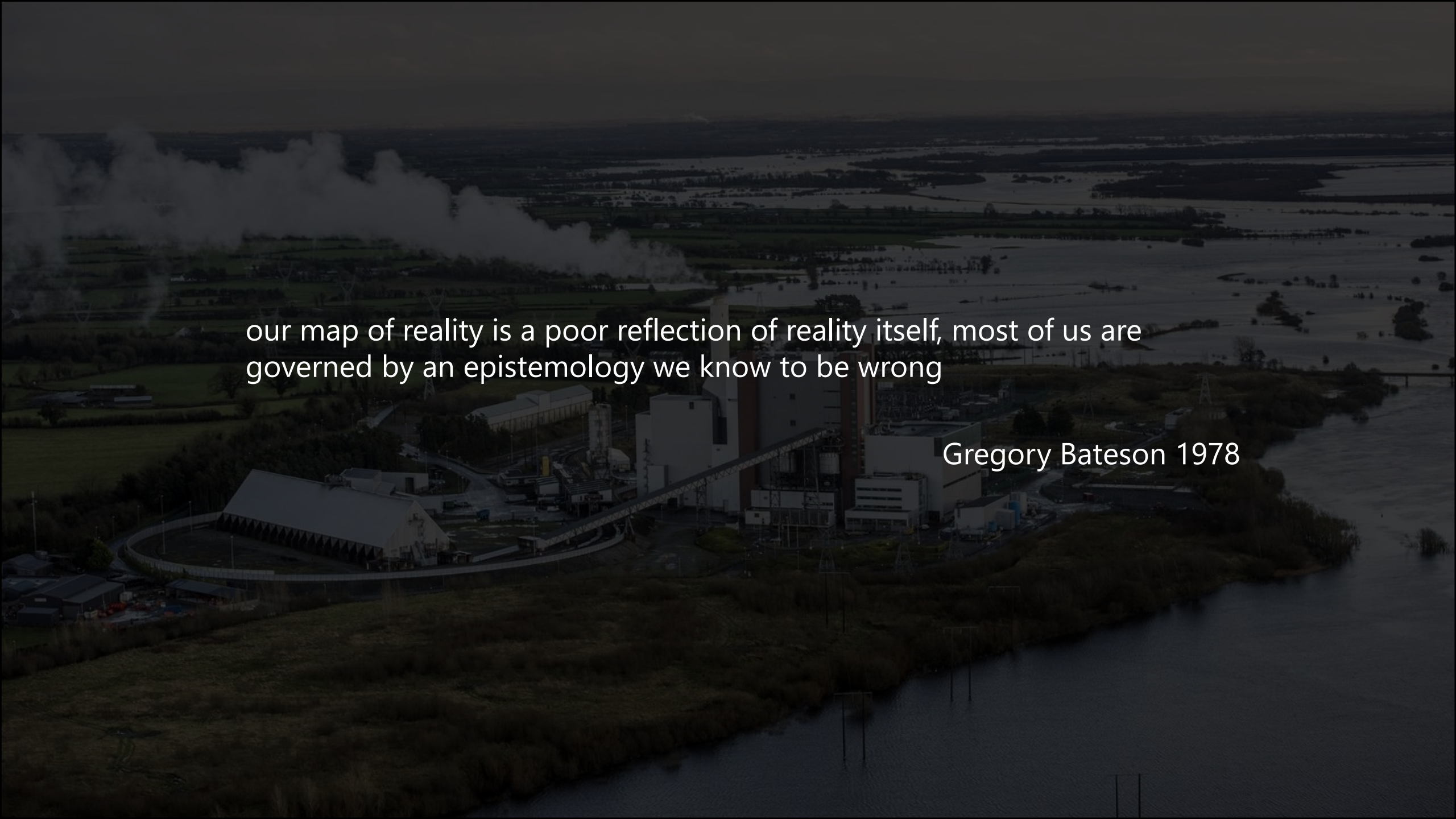
The environmental crisis is a design crisis. It is a consequence of how things are made...[Yet] design manifests culture and culture rests firmly on the foundation of what we believe to be true about the world

Van der Ryn and Cowan 1996, p.6

...unsustainability springs from the cultural structure of modernity itself.

John Ehrenfeld 2009

Ehrenfeld, John. *Sustainability by Design: A Subversive Strategy for Transforming Our Consumer Culture*. New Haven, Conn: Yale University Press, 2009. Print



our map of reality is a poor reflection of reality itself, most of us are
governed by an epistemology we know to be wrong

Gregory Bateson 1978

and Ecosystem Services

The diagram shows a progression from left to right, representing different levels of understanding and engagement with a river. On the left, a river flows through a landscape. Four spotlights illuminate different aspects of the river, each corresponding to a specific value typology. The spotlights are labeled: 'Living from river resources', 'Living in riverine landscape', 'Living with riverine species and habitats', and 'Living as river as part of us'. The background is a gradient of colors (blue, green, yellow, orange, red) representing these different perspectives.

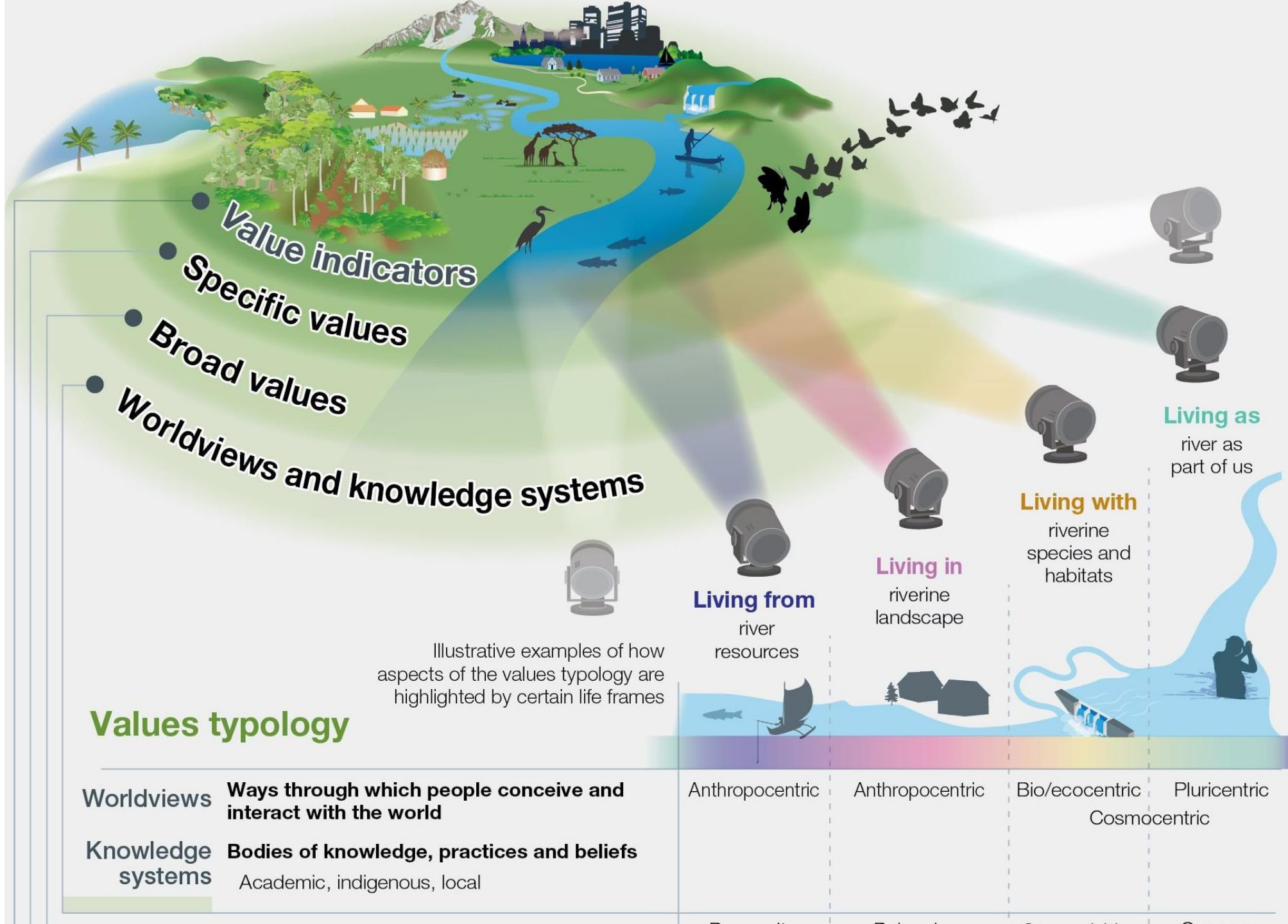
Value indicators

- Specific values
- Broad values
- Worldviews and knowledge systems

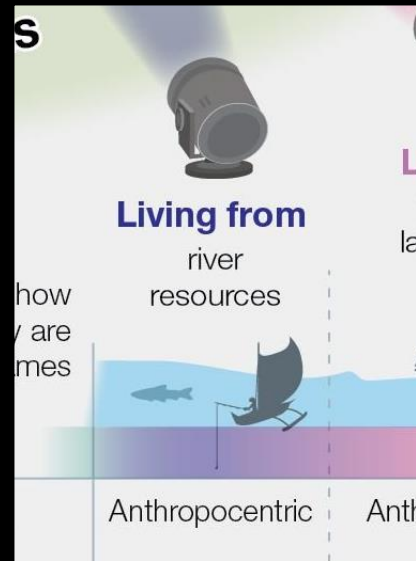
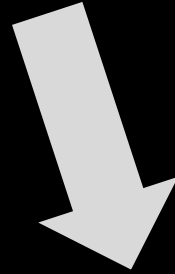
Values typology

Worldviews	Knowledge systems	Broad values	Specific values	Value indicators
Anthropocentric	Anthropocentric	Bio/ecocentric Cosmocentric	Pluricentric	
Ways through which people conceive and interact with the world	Bodies of knowledge, practices and beliefs Academic, indigenous, local	Guiding principles and life goals	Judgements regarding the importance of nature in particular situations Instrumental: means to an end, nature as a resource/asset, satisfaction of needs and preferences, usefulness for people Intrinsic: agency of other-than-humans, inherent worth of biodiversity as ends in-and-of themselves Relational: importance of desirable, meaningful, and often reciprocal human relationships	Quantitative measures and qualitative descriptors Biophysical Monetary Socio-cultural
Prosperity, Livelihood	Belonging, Health	Stewardship, Responsibility	Oneness, Harmony with nature	
Commercial fishery stock	Health benefits of recreation on the river	River as fish habitat	Fish as co-inhabitants	
Cultural meanings of fishing	Intrinsic value of heritage fish Sense of place of a fishing community	The right of fish to exist Respect for fish life cycles	Fish as part of kinship or clan relationships	
Tonnes of fish	Physiological effects of being in nature	Number of fish species	Nutrition of fish	
Market price of fish harvest	Willingness to pay for recreation	Existence value		
Gender-specific participation in fishing	Ratings of special places	Legal standing of biodiversity	References to personhood of fish	

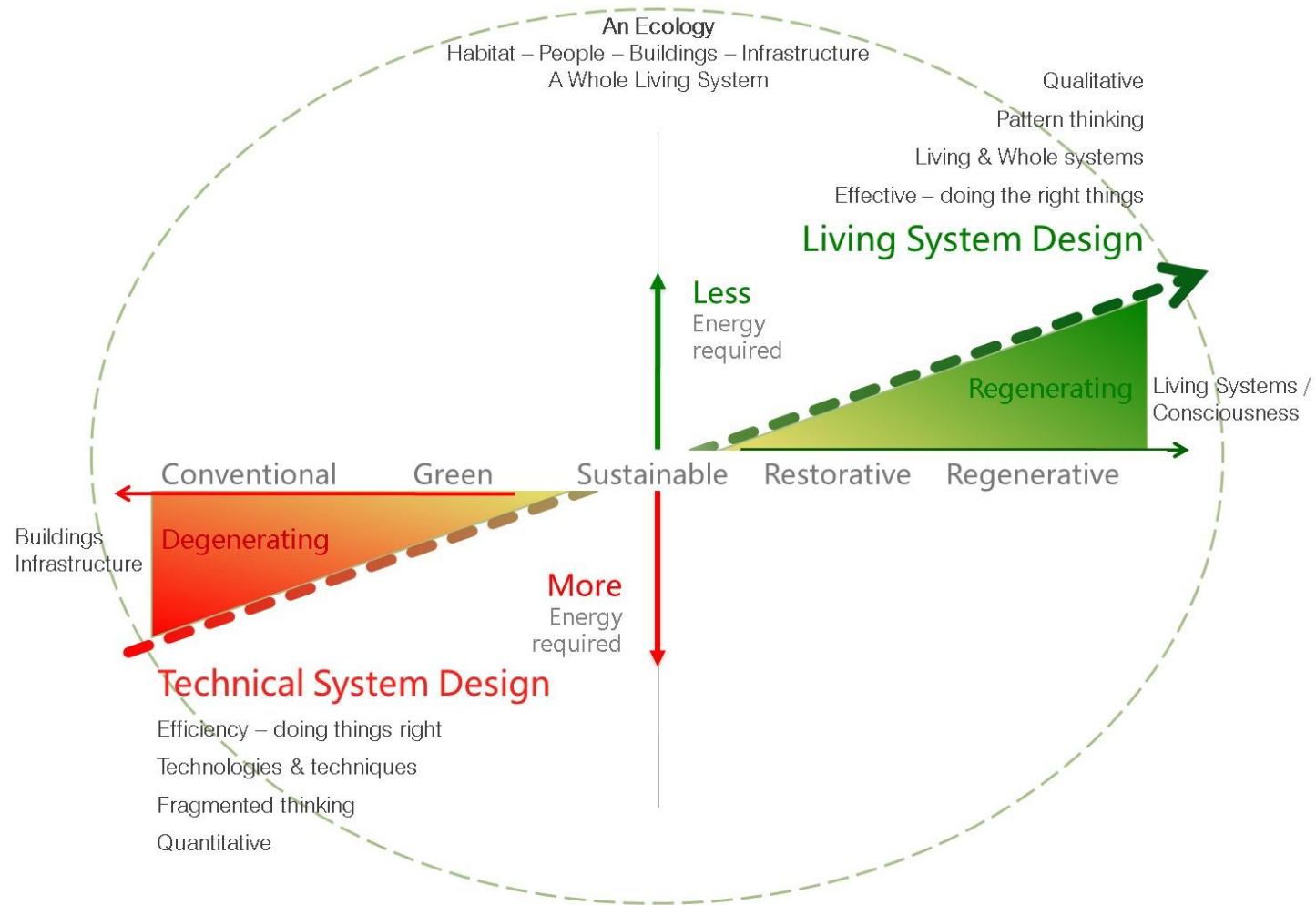
The designations employed and the presentation of material on the maps used in the present report do not imply the expression of any opinion whatsoever on the part of the Intergovernmental Science-Policy Platform on Biodiversity and Ecosystem Services concerning the legal status of any country, territory, city or area or of its authorities, or concerning the delimitation of its frontiers or boundaries. These maps have been prepared for the sole purpose of facilitating the assessment of the broad biogeographical areas.



WE ARE HERE



What Design is Trying to Do...



...and why it's not working

Our present anthropocentric desires, expressed in imperialist language, submit our planet to neo colonizing attitudes, anthropocentric values, welfare abuses of non-humans, industrial exploitation and highly impartial interpretations of events.

Having upheld this worldview for the last 300 years, we must now ask how we can repurpose the tools of modernity against the terrors of Progress to make visible the other worlds it has ignored and damaged

Tsing et al, 2017

Hughes, Rolf, and Rachel Armstrong. *The Art of Experiment: Post-pandemic Knowledge Practices for 21st Century Architecture and Design.* , 2021. Print.

Epistemological Error

...a way of knowing that is a legacy of the western philosophical tradition. It determines that we generally do **not perceive systemic interconnections and are thereby unable to deal with complexity** presented by the converging ecological social and economic crises

Joanna Boehnert (2018, pg 68)

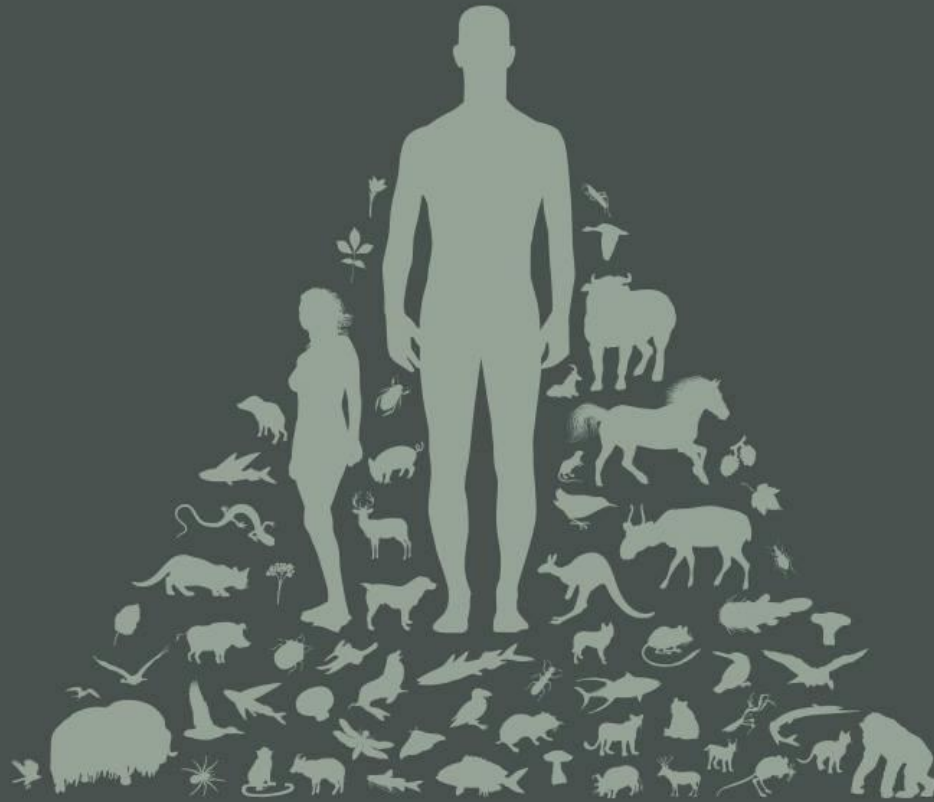
Epistemological Fallacies

1. That mind and nature are independent of each other
2. That humans are separate from the rest of the natural world
3. That this separation creates a natural and necessary competition
4. That humans must strive to dominate each other and non-human nature
5. That instrumental approaches to knowledge can describe an objective truth, and
6. That the nonhuman natural world has no agency of its own

(the ecological crisis') ...are just different facets of one single crisis,
which is largely a **crisis of perception**

David Orr 2004

What do we need?



Anthropocentric

Biocentric
Ecocentric
Lifecentric
Planetcentric

Ecological Epistemologies and Ontologies

Ecological epistemologies are under girthed by the awareness of ecological embeddedness and the subsequent **revision of knowledge systems to reflect this awareness**.

Ecological ontology refers to our actual constitutive embeddedness within and **as part of larger ecological systems**.

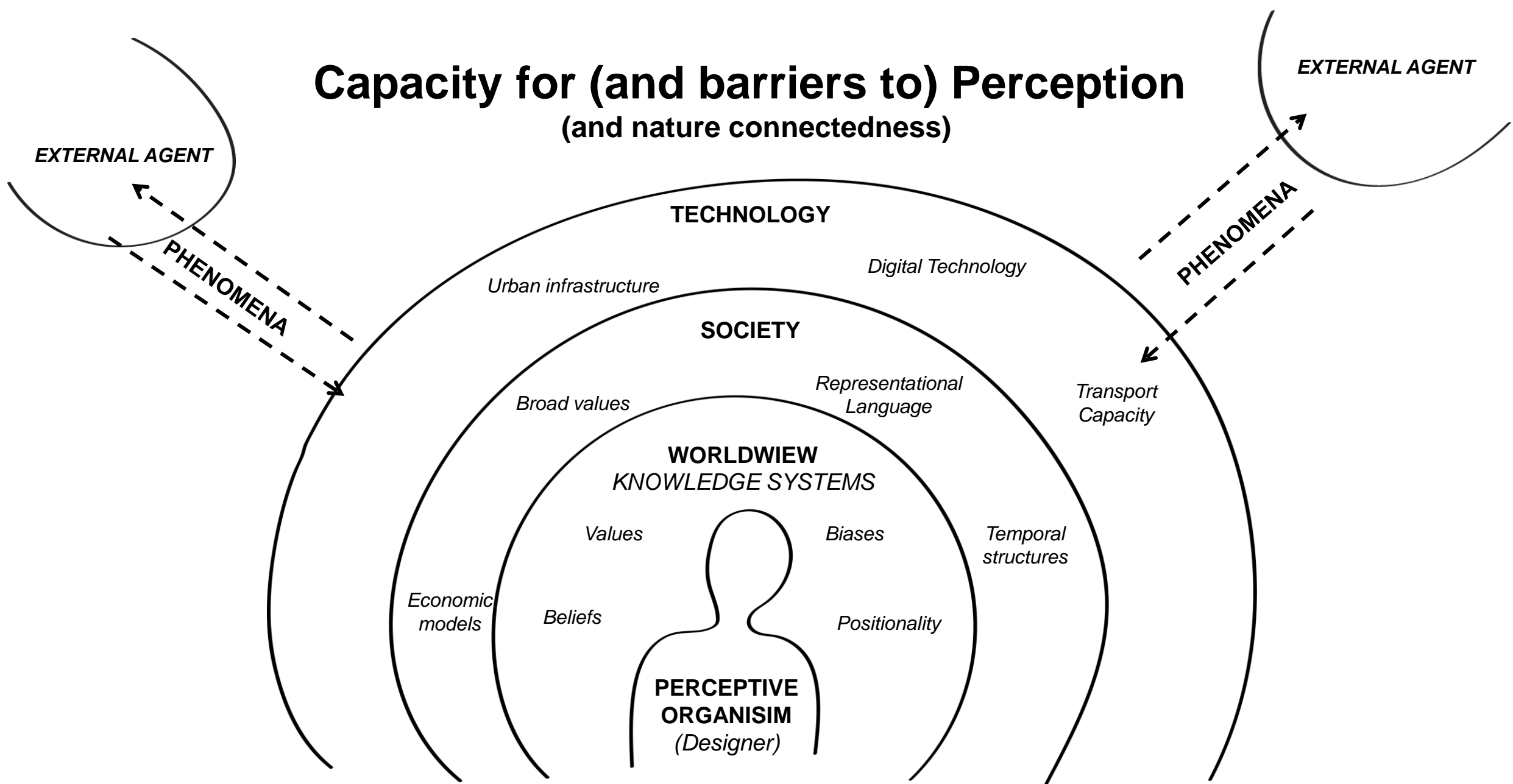
Ethico-onto-epistem-ology

knowing is a **material practice of engagement** as part of the world in it's differential becoming

Boehnert, Joanna. *Design, Ecology, Politics: Towards the Ecocene*. 2018. Bloomsbury, London.

Barad, Karen. *Meeting the Universe Halfway : Quantum Physics and the Entanglement of Matter and Meaning*, Duke University Press, 2007

Capacity for (and barriers to) Perception (and nature connectedness)



...a new tool set of **knowledge instruments** that enable people to make the world livable again through negotiated partnerships with non-human agents

Huges and Armstrong

...to create the conditions for new thoughts

Marilyn Strathern

Hughes, Rolf, and Rachel Armstrong. *The Art of Experiment: Post-pandemic Knowledge Practices for 21st Century Architecture and Design.* , 2021. Print.

Kohn, Eduardo. *How Forests Think: Toward an Anthropology Beyond the Human.* , 2015. Print.



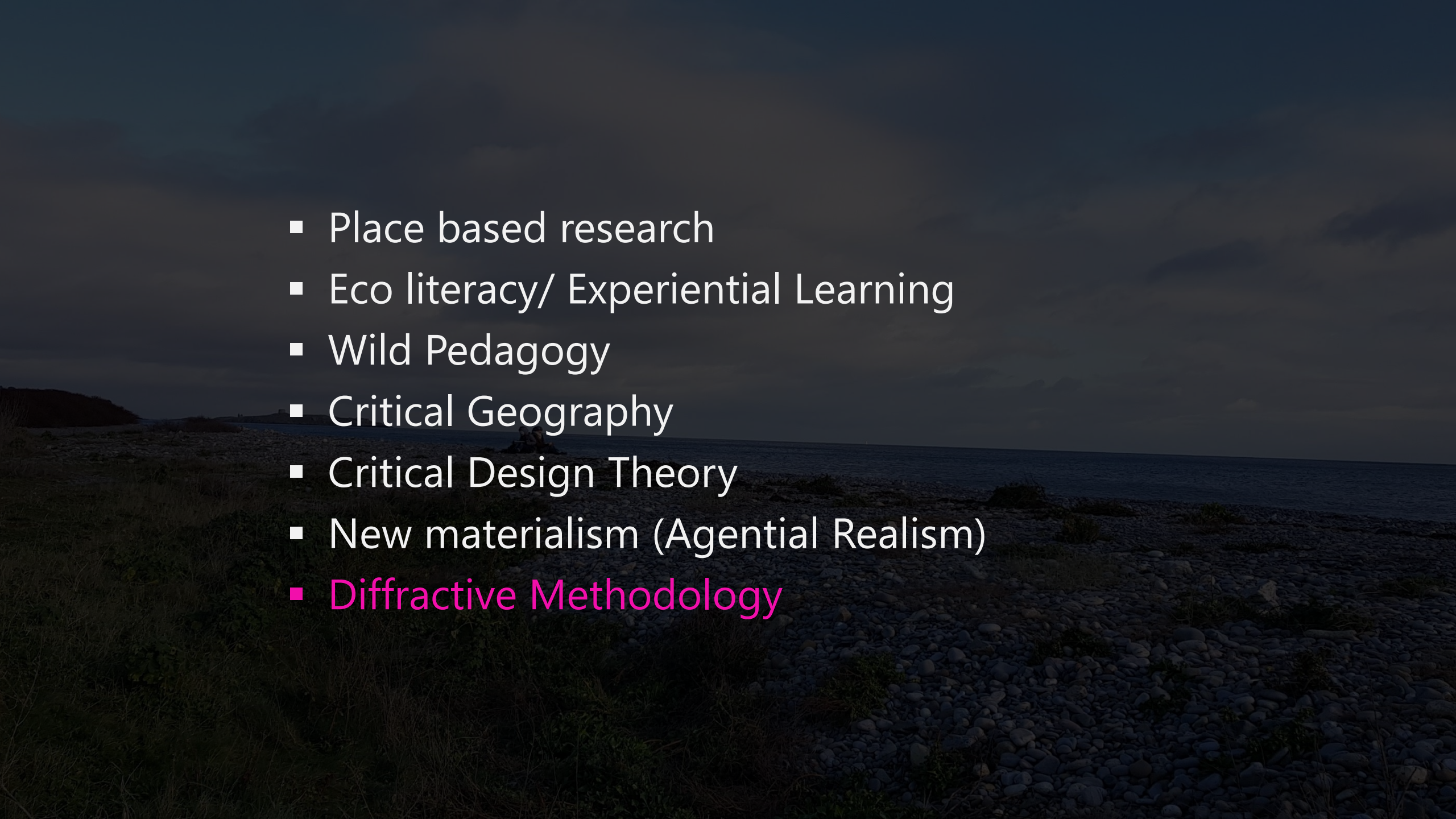
Preceptor Tools - Clyde Doyle - 2015

A photograph of a forest landscape. In the foreground, there is a dense patch of tall, thin grasses, some green and some dry. Several large, moss-covered tree trunks are visible, mostly without leaves. The background shows more trees and a clear sky. A bright yellow rectangular box is superimposed over the center of the image, containing the text 'THEORETICAL FRAMEWORK' in bold, magenta, sans-serif capital letters.

THEORETICAL FRAMEWORK

+

METHODOLOGY

- 
- Place based research
 - Eco literacy/ Experiential Learning
 - Wild Pedagogy
 - Critical Geography
 - Critical Design Theory
 - New materialism (Agential Realism)
 - **Diffraction Methodology**

Agential Realism

Reality is composed not of things in-themselves or things-behind-phenomena but of *things-in-phenomena*

...the entanglements of bodies is not an interaction of pre-existing entities but *the formation of phenomena and subjectivities*, this is the process of *intra-action*.

Intra-action

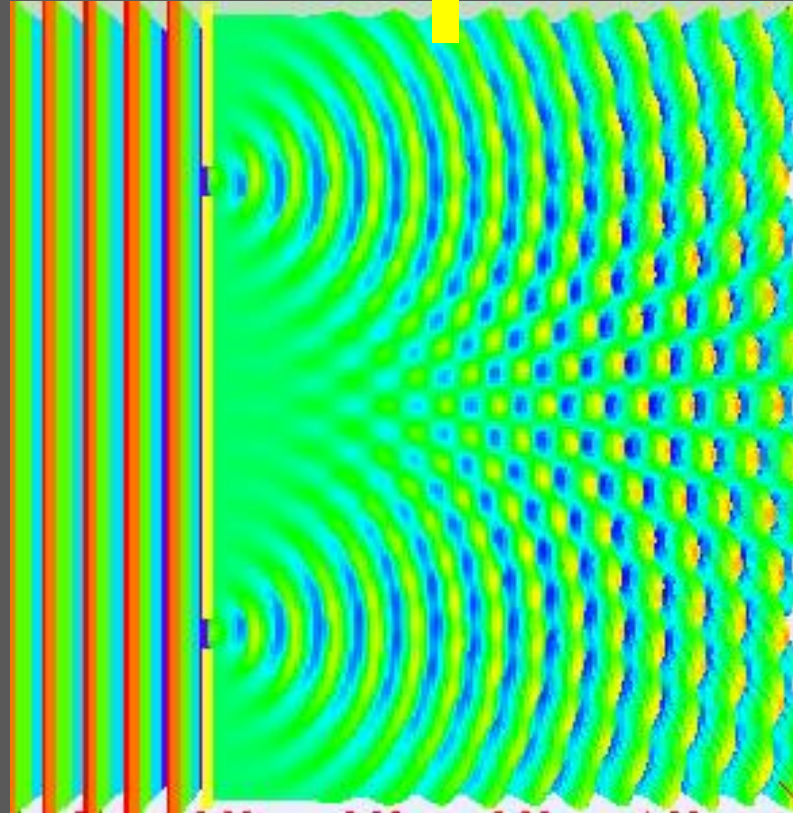
"...*"intra-action"* signifies the *mutual constitution of entangled agencies*. That is, in contrast to the usual *"interaction,"* which assumes that there are separate individual agencies that precede their interaction, *the notion of intra-action recognizes that distinct agencies do not precede, but rather emerge through, their intra-action.*" (pg.33)

Barad, Karen. Meeting the University Halfway: Quantum Physics and the Entanglement of Matter and Meaning. Durham: Duke University Press, 2007. Print.

Diffraction is a **mapping of interference**, not of replication, reflection, or reproduction.

Barad, Karen. "Posthumanist Performativity: Toward an Understanding of How Matter Comes to Matter." *Signs*, vol. 28, no. 3, 2003, pp. 801–31, <https://doi.org/10.1086/345321>. Accessed 8 May 2022.

Diffraction



Double slit experiment

Diffraction Methodology

"Crucially, *agency is a matter of intra-acting*; it is an enactment, not something that someone or something has. *Agency is doing/being in its intra-activity*."

Intra-action understands agency as not an inherent property of an individual or human to be exercised, but as a dynamism of forces in which all designated 'things' are constantly exchanging and diffracting, influencing, and working inseparably.

Barad, Karen. *Meeting the Universe Halfway : Quantum Physics and the Entanglement of Matter and Meaning*, Duke University Press, 2007

Diffractive Methodology

Diffraction	Reflection
differences emerge within phenomena agential separability real material differences but without absolute separation	inside/ outside absolute separation no difference interior/exterior
diffraction/difference pattern intra-acting entangled states of nature cultures	words mirror things social / natural binary nature / culture binary
about making a difference in the world about taking responsibility for the fact that our practices matter; the world is materialized differently through different practices (contingent ontology)	about representations about finding accurate representations about the gaze from afar

Barad, Karen. *Meeting the Universe Halfway : Quantum Physics and the Entanglement of Matter and Meaning*, Duke University Press, 2007

Barad on Language

Language has been granted too much power. The linguistic turn, the semiotic turn, the interpretative turn, the cultural turn: it seems that at every turn lately every “thing”—even materiality—is turned into a matter of language or some other form of cultural representation.

A performative understanding of discursive practices challenges the representationalist belief in the power of words to represent pre-existing things.

Barad, Karen. *Meeting the Universe Halfway : Quantum Physics and the Entanglement of Matter and Meaning*, Duke University Press, 2007



THIS INFORMS MY **DESIGN STANCE**

PERFORMATIVE (*non-representational*)

NON-VERBAL

RELATIONAL

EMBODIED

BIOREGIONAL

ETHIC-ONTO-EPISTEM-LOGICAL

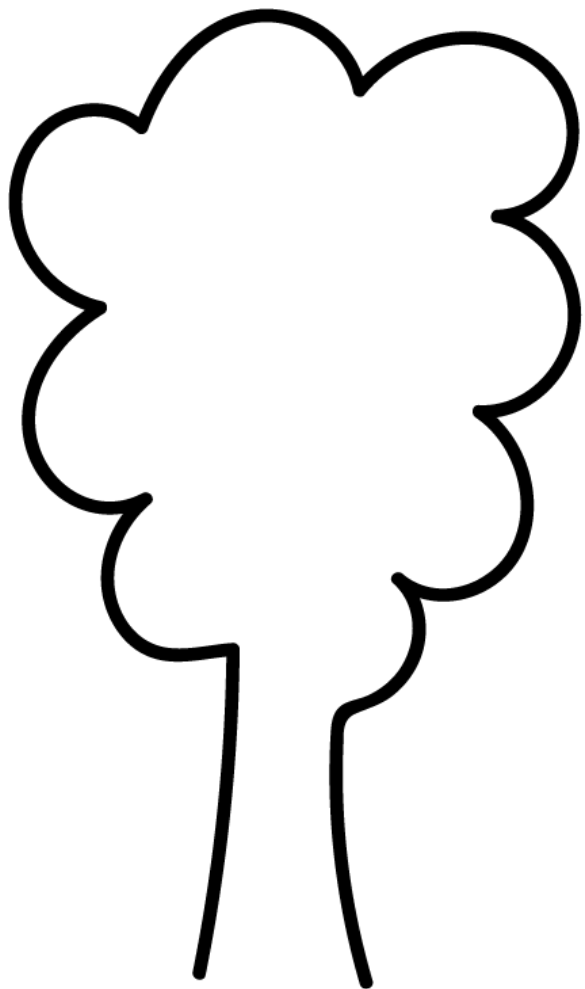
Workshops 2022

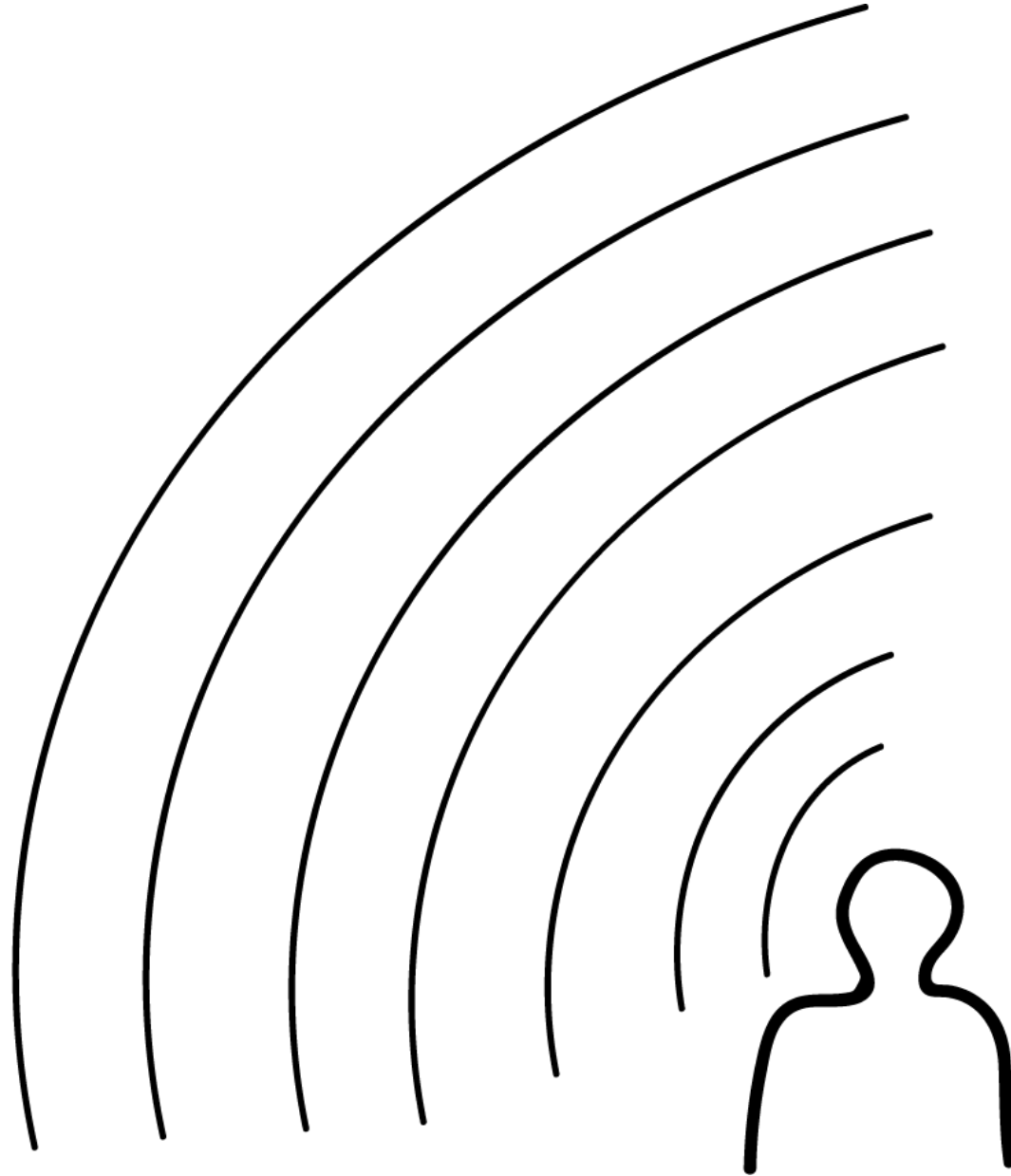
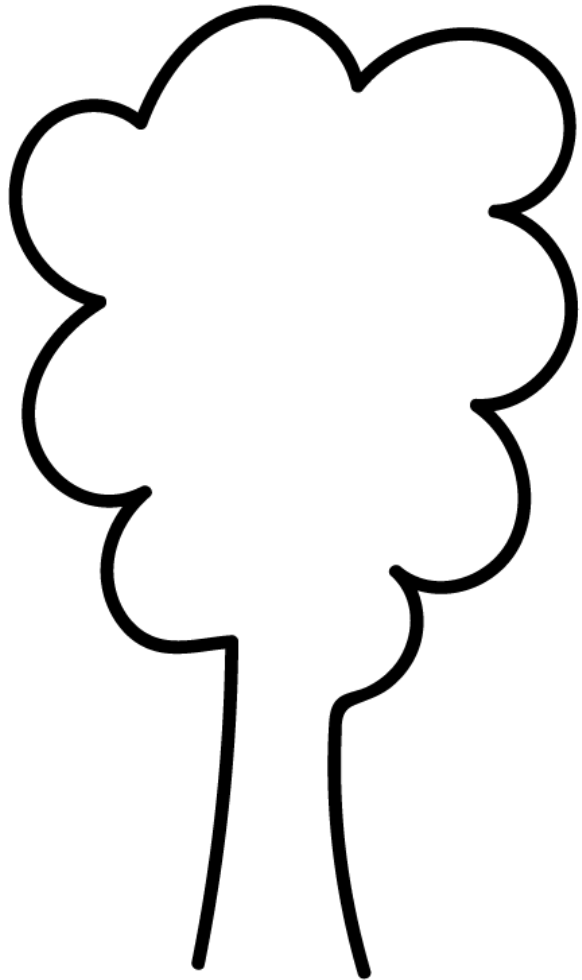
Sensory Mapping

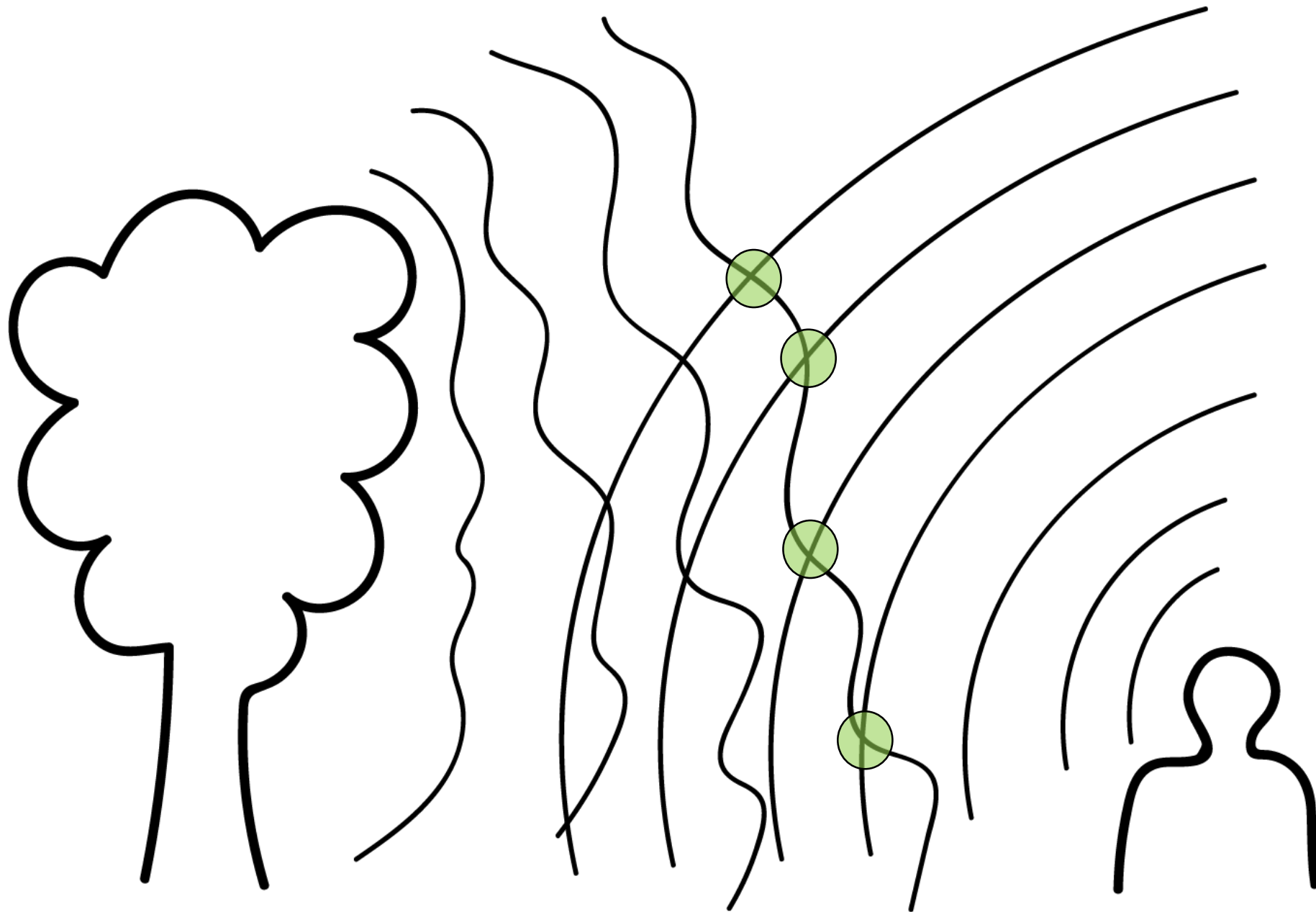


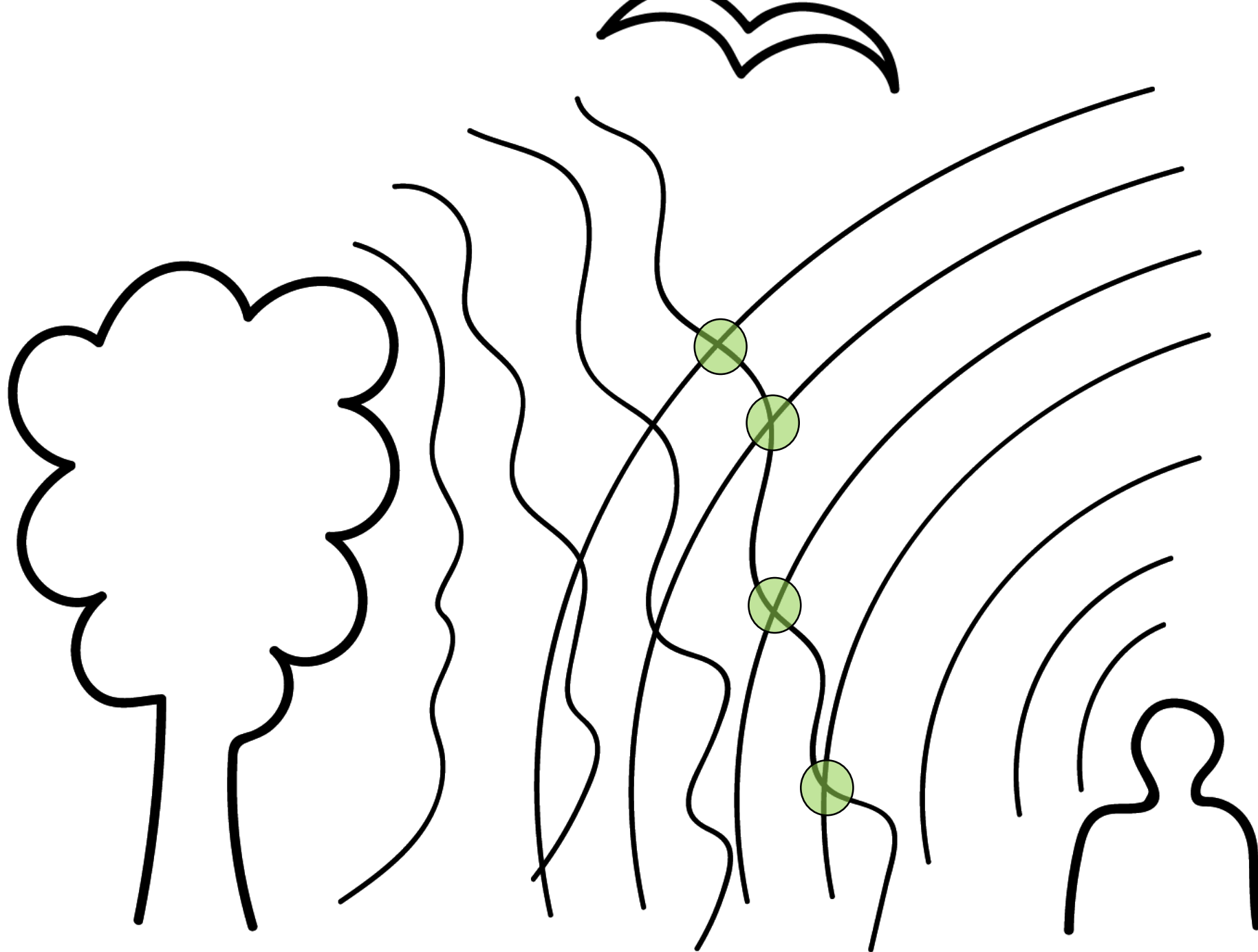
Agential - cuts **CCA Derry 2015**

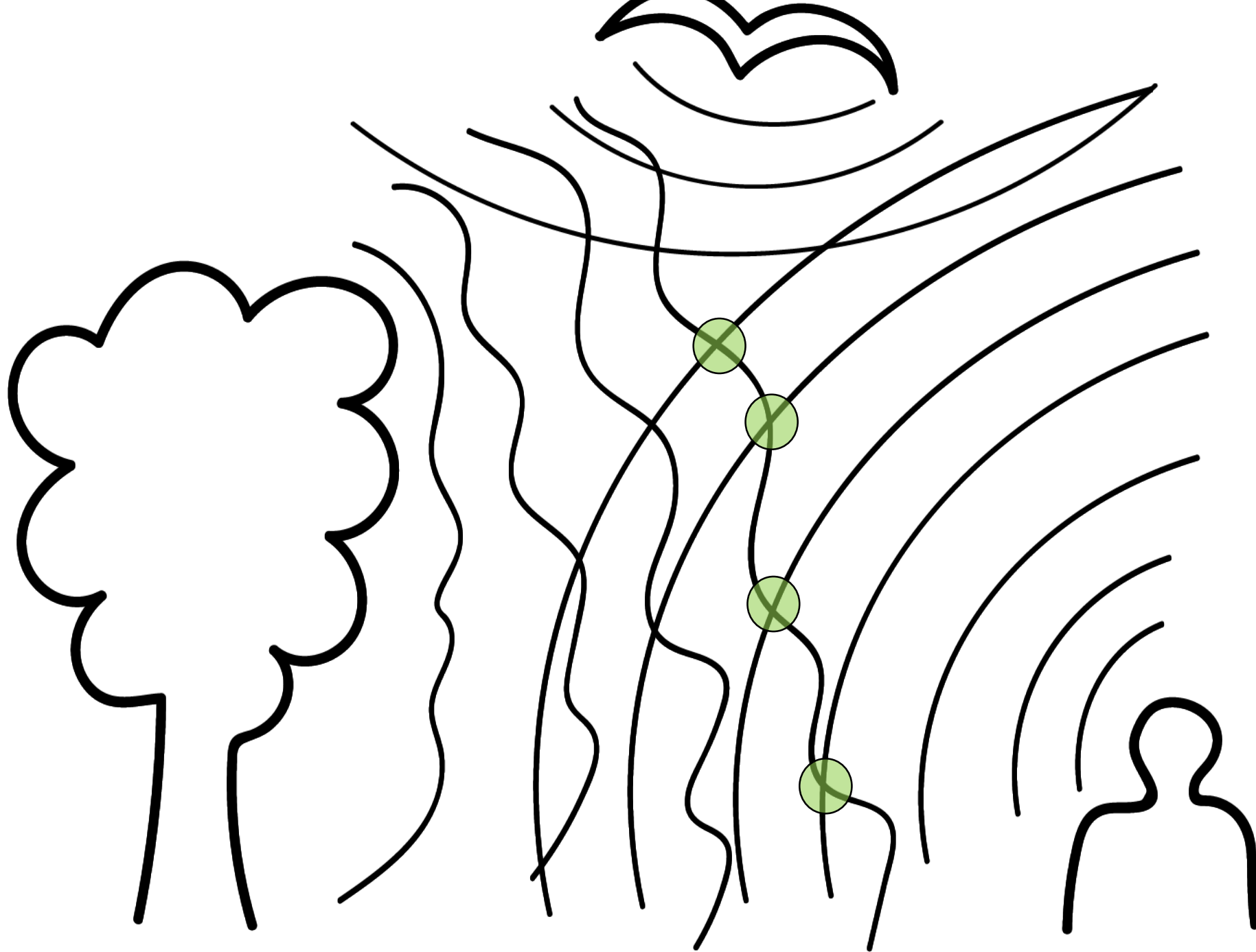
Aisling O'Donnell, Sarah Browne, Between a Dog and a Wolf: An Animal Empathy Workbook, CCA Derry/Londonderry 2015

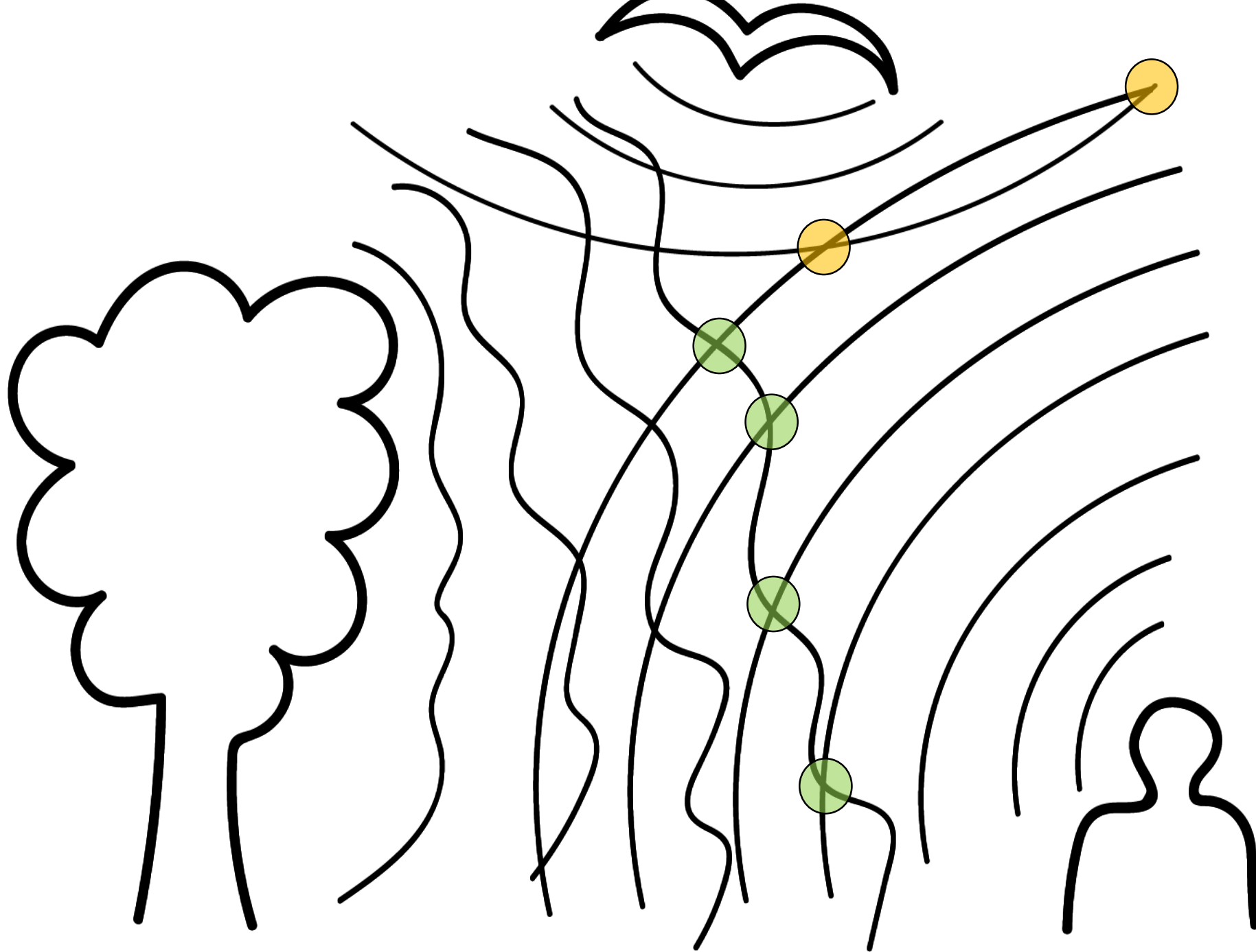














Map of You – initial design and testing 2022

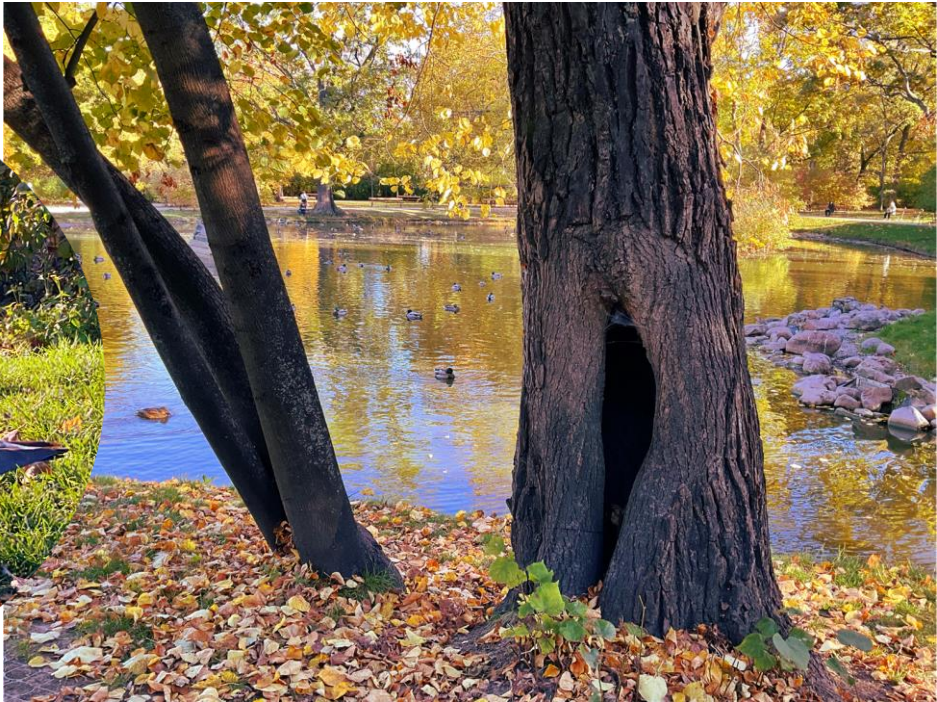
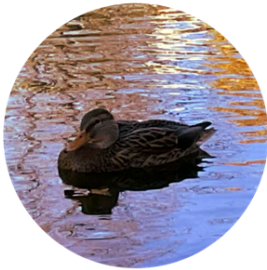
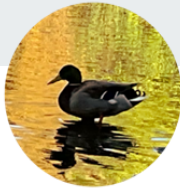
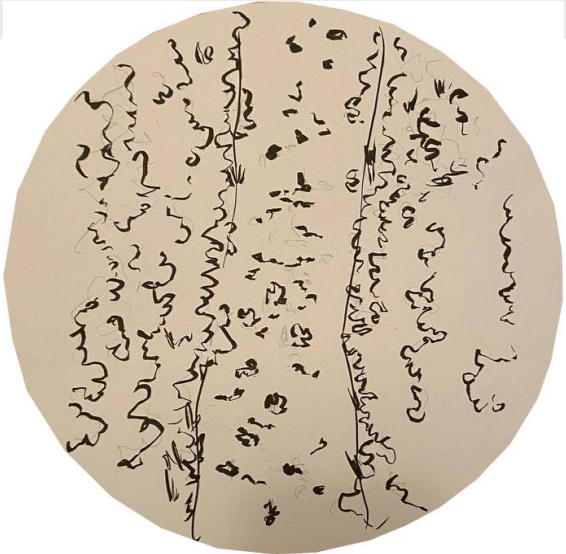
- Identify a place
- Record and map
- Identify *phenomena*
- Create “legend” (visual language) of your senses
- Re-map space using this non-verbal language
- ...



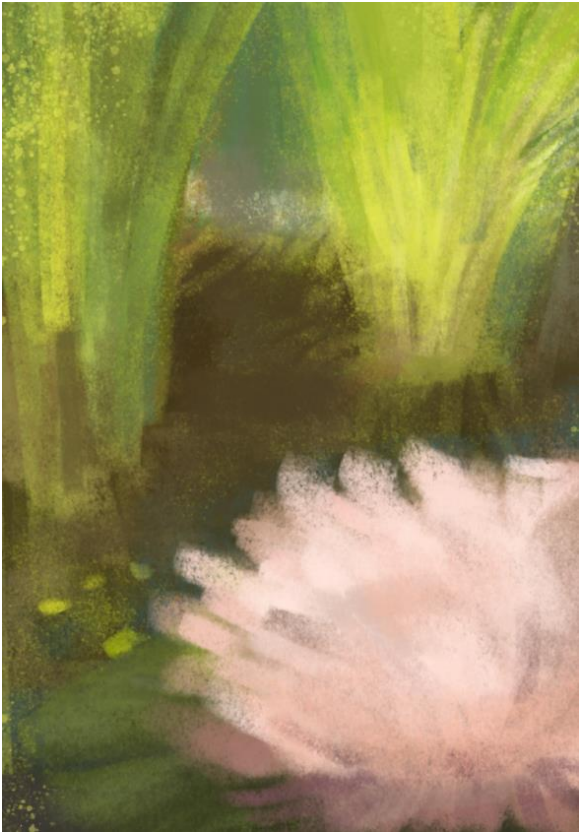
Warsaw – Oct 2022

Polish-Japanese Academy of Information Technology

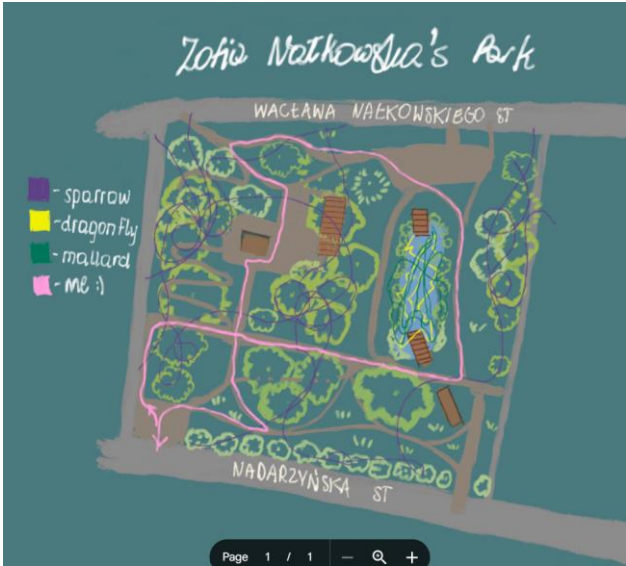
Place based research



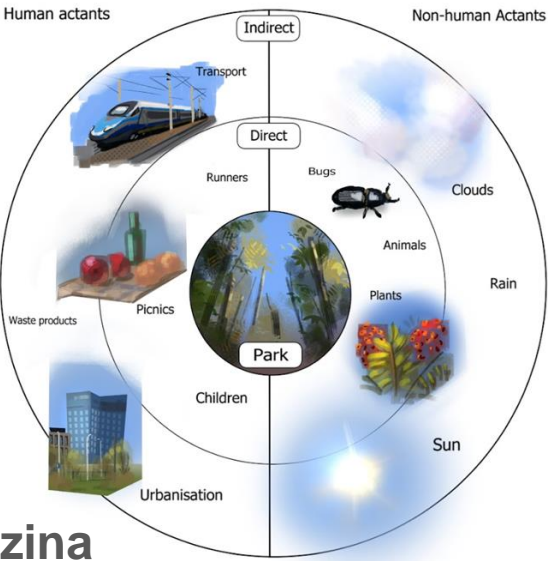
Initial Mapping



Debora Zebrowska



Alina Kaverzina



Namir Strzelecki



Legend – new visual /sensory language



Sasha Shevshuk



Namir Strzelecki



Anna Pertsova



Alina Kaverzina

Re-mapping



Anastasia Mashkina



Kristina Maskalan



Namir Strzelecki

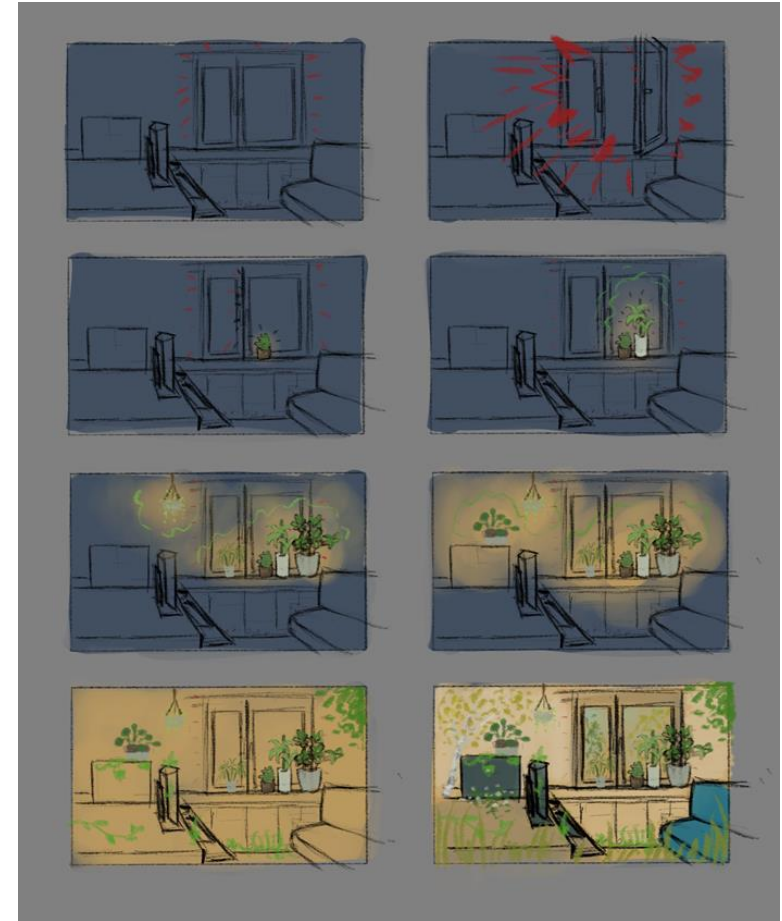


Viktor Bolgka



Sasha Shevshuk

Outcomes



Insights

- Structure was critical – but required more flexibility
- The extended period contributed to more successful engagement in place
- Creating the legend was a challenge
- Outcomes were more meaningful

CONFERENCE AIMS TO DISCUSS METHODOLOGICAL ASPECTS OF NON-HUMAN,
MORE-THAN-HUMAN AND OTHER OTHERS FROM INTERDISCIPLINARY PERSPECTIVES,
WHILE SITUATING THE RESEARCH AND PRACTICES TO CURRENT SOCIO-ECONOMICAL CONTEXTS,
TACKLING THE WICKED PROBLEMS OF YESTERDAY, TODAY, AND TOMORROW.

ENCOUNTERING NON-HUMANS

ON METHODOLOGIES
FOR THE POST-ANTHROPOCENE

26-27 NOVEMBER 2022
FACULTY OF ARTS MU, BRNO

CONFERENCE, WORKSHOPS

MUNI.CZ/GO/NONHUMANS_REGISTER
MUNI.CZ/GO/NONHUMANS_WEBSITE



Brno– Nov 2022

Masarykova univerzita

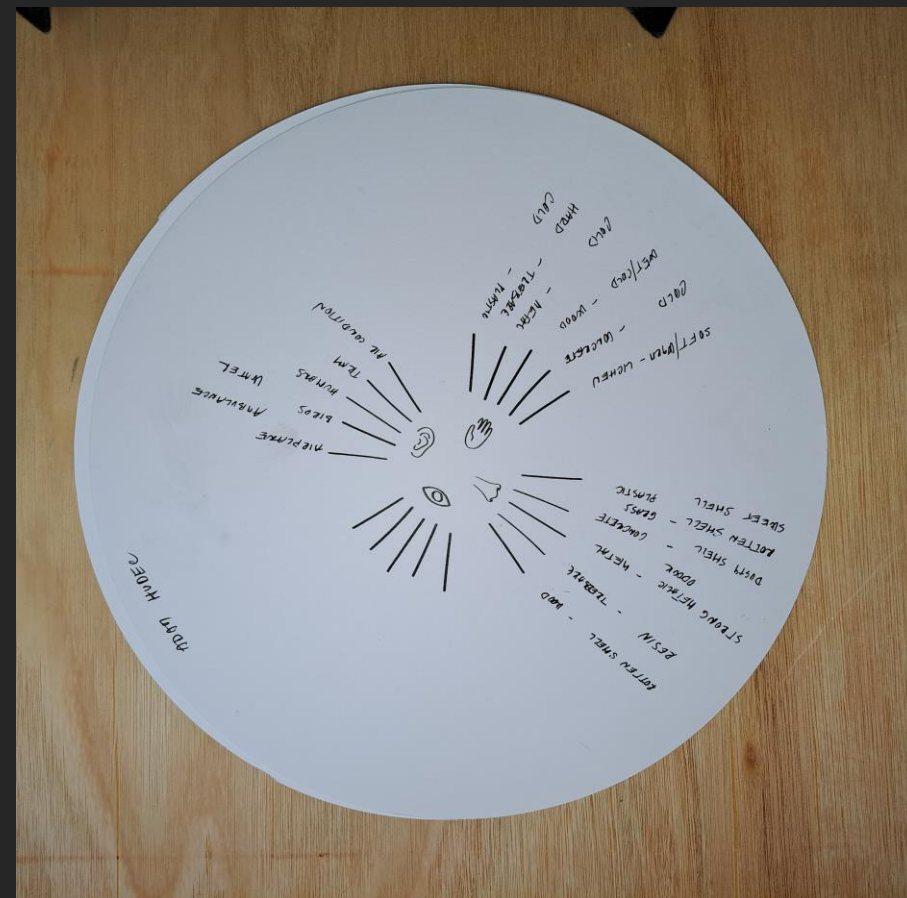
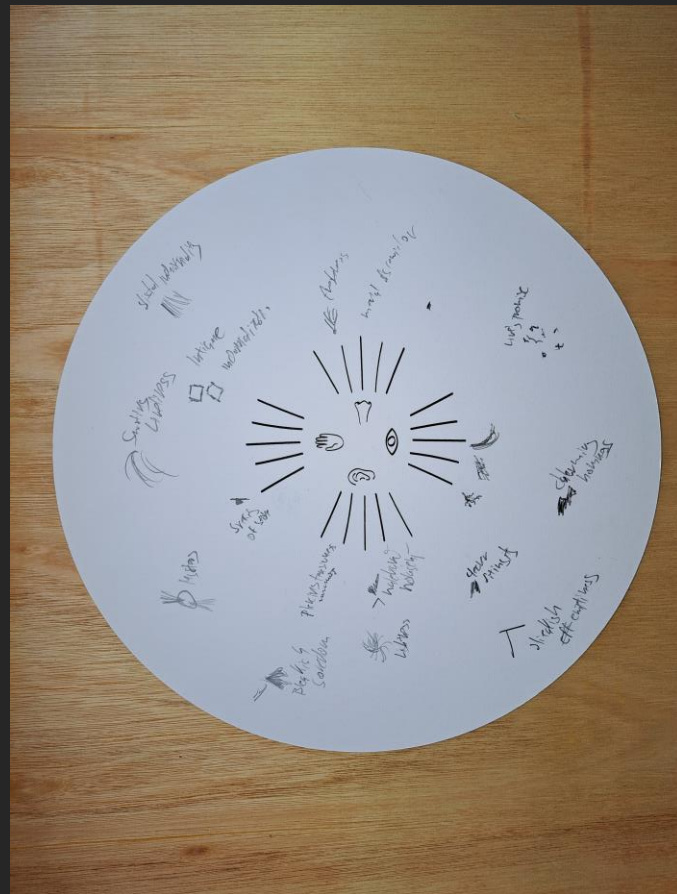


Diffraction Mapping Workshop

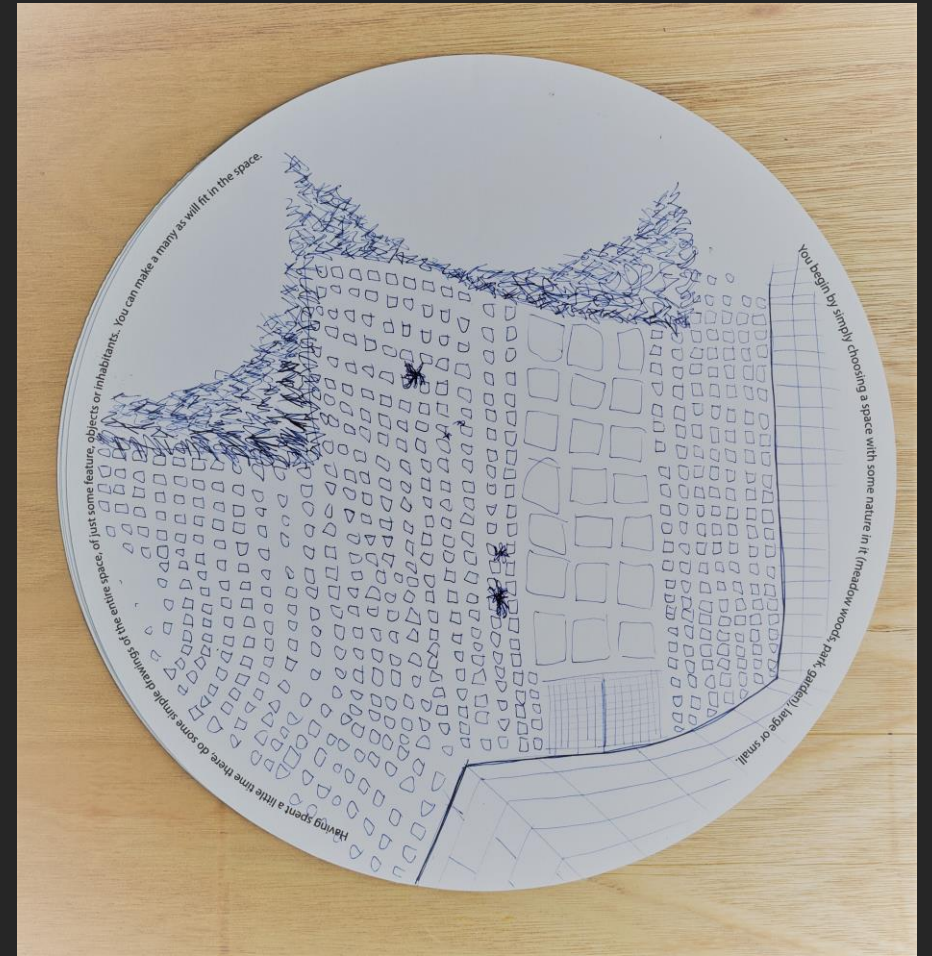
- iterate on tool and process
- test with peers (non-students)
- Focus on outcomes for it's own sake



Map of You Brno 2022 - Legends



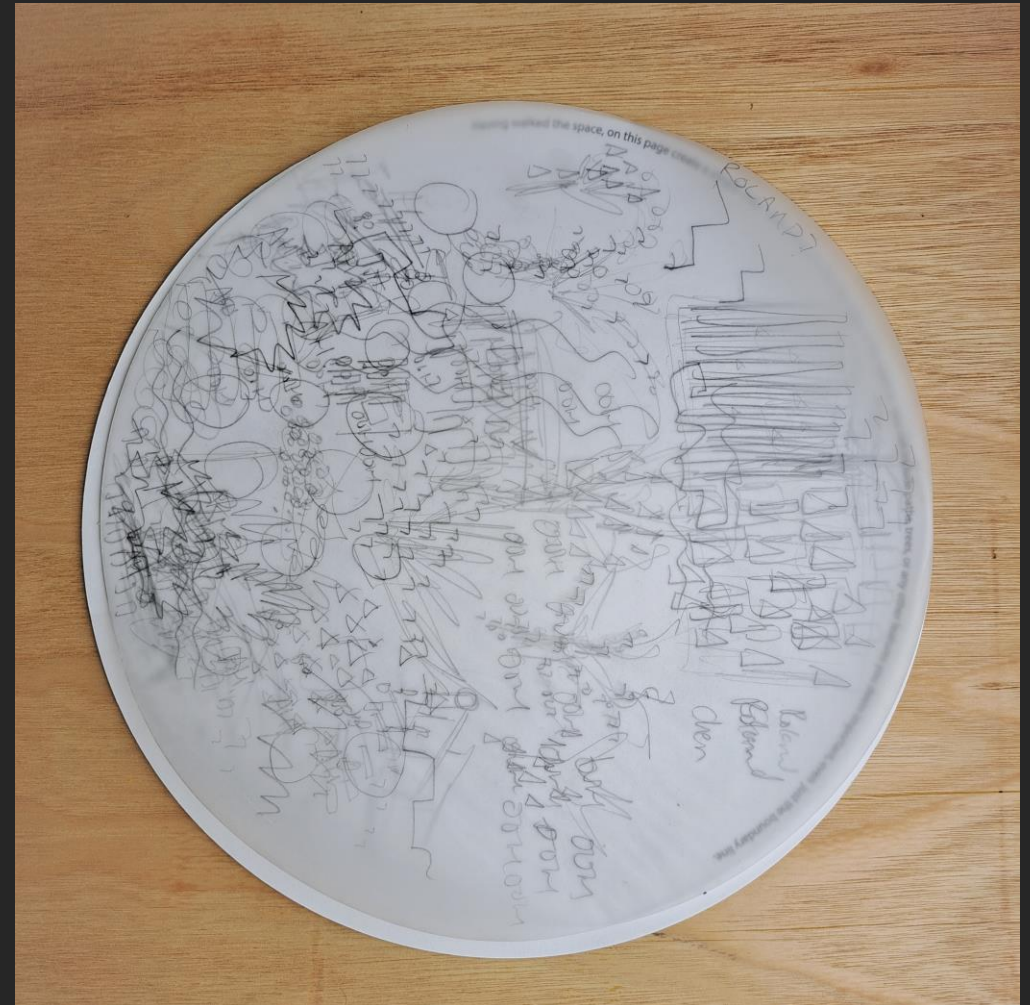
Map of You Brno 2022 – Mapping and Remapping



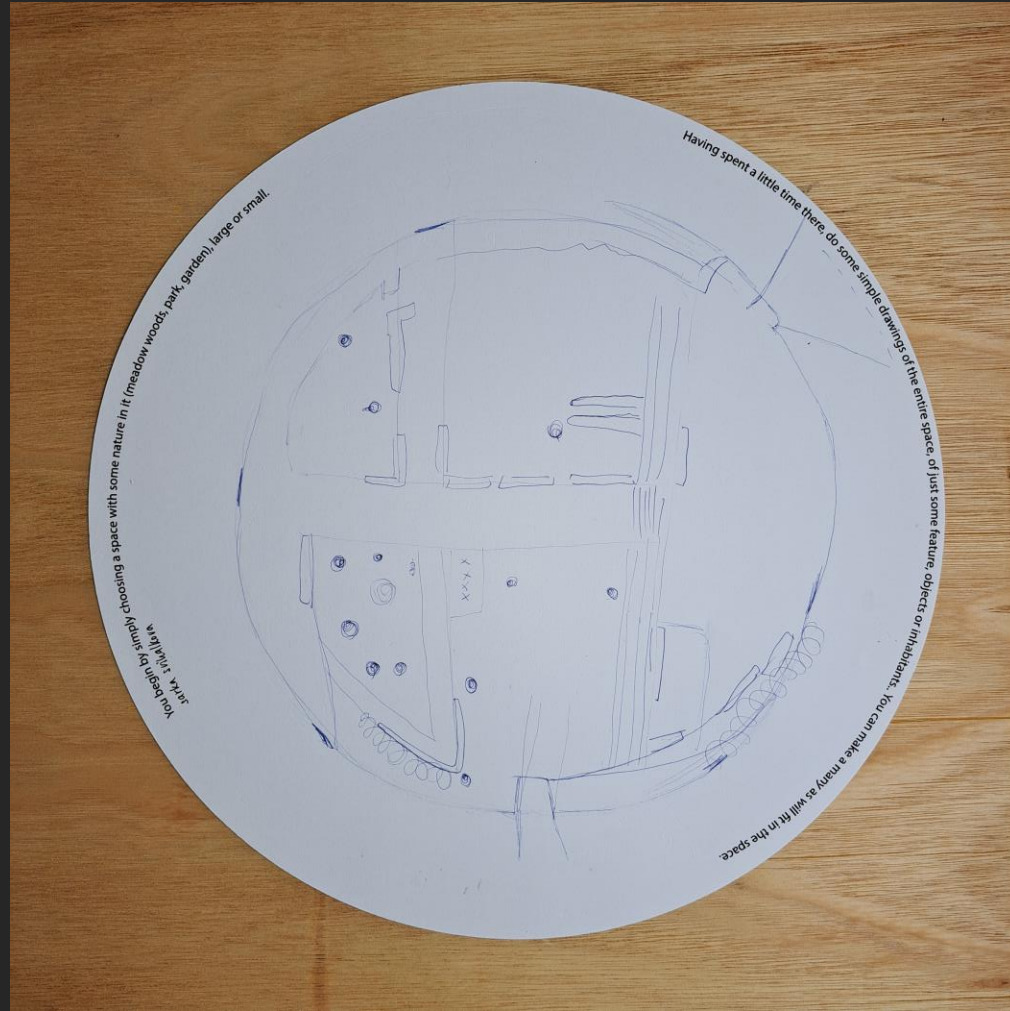
Map of You Brno 2022 – Mapping and Remapping



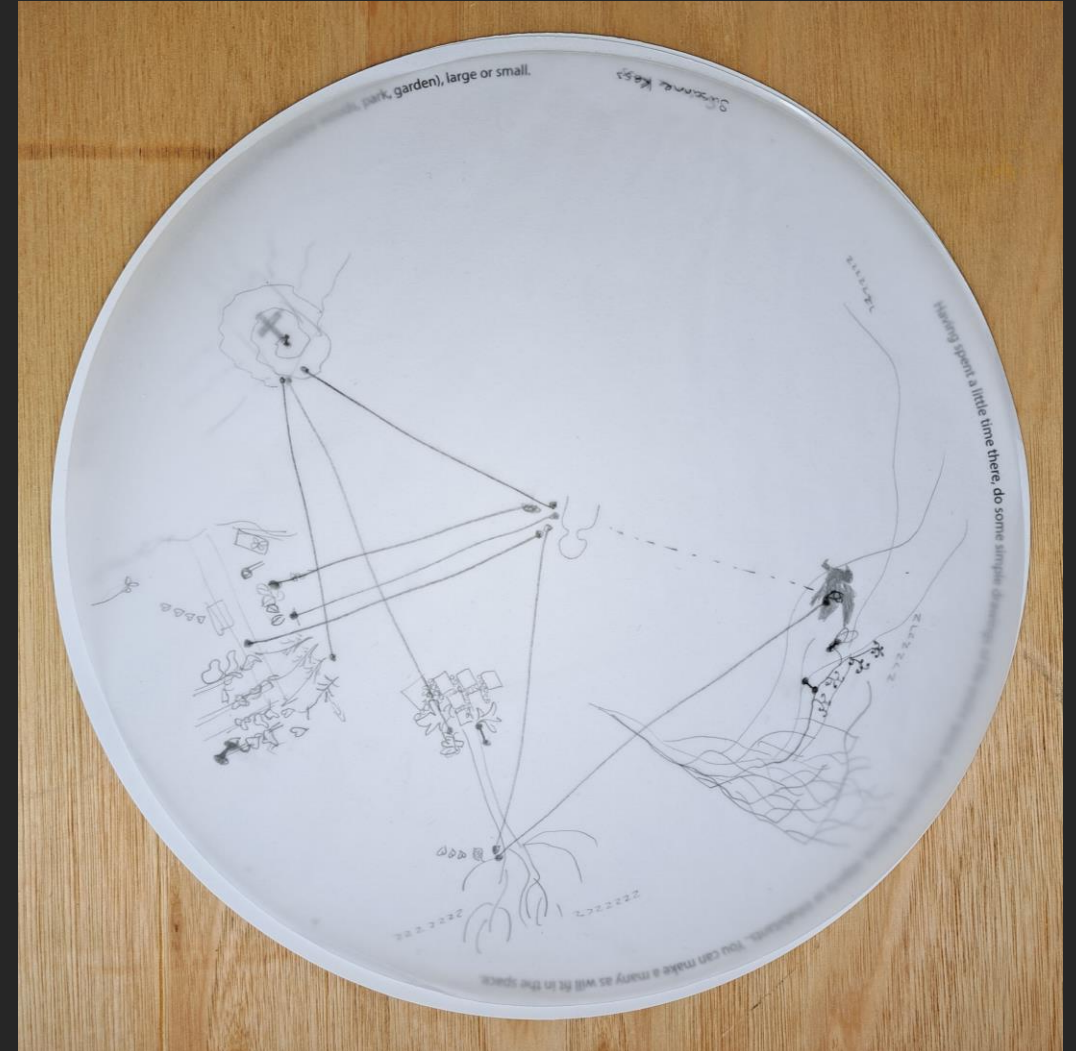
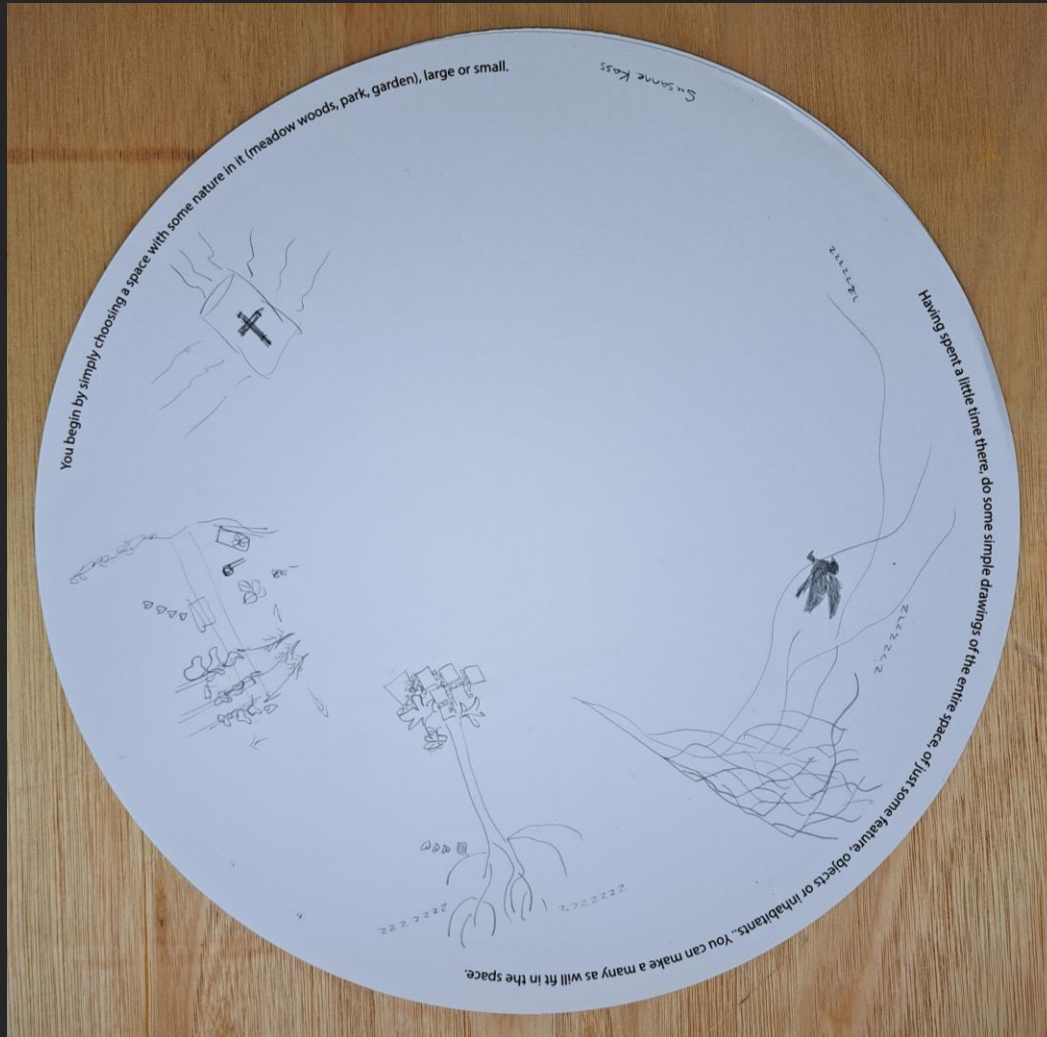
Map of You Brno 2022 – Mapping and Remapping



Map of You Brno 2022 – Mapping and Remapping



Map of You Brno 2022 – Mapping and Remapping

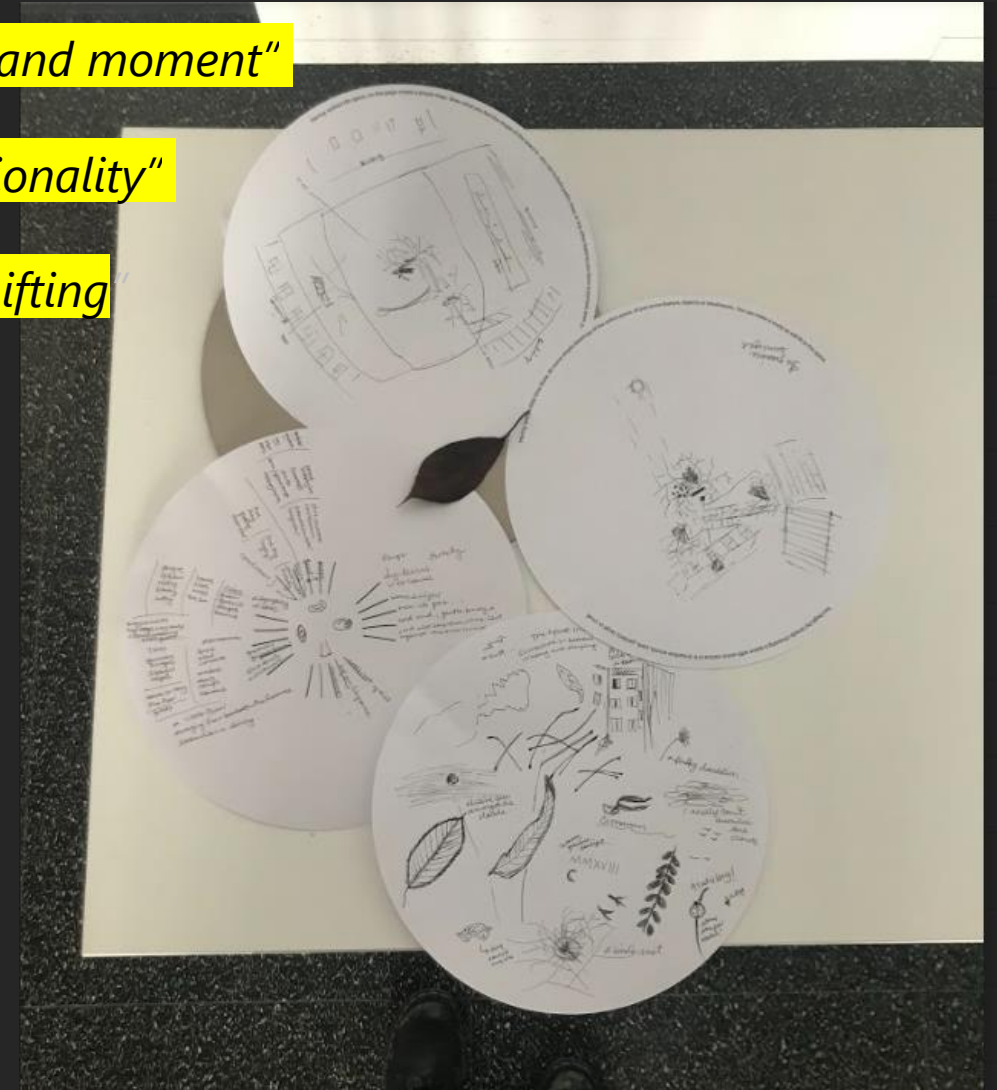


Survey Feedback

"It helped me attune to other beings around me in a given place and moment"

"movement is an important part of perception of space and relationality"

"While I felt connected to my world in that temporal scale was shifting"



Summer 23

- Rewrite literature review
- Final workshop iteration and test (Design West – Inisheer, Galway)
- Develop (actually return to) material engagements in place

DESIGN
WEST
SUMMER
SCHOOL ²⁰²³
PROGRAMME
PEOPLE
APPLY
PARTNERS
GALLERY
INFO

🐦 f @



A photograph of a forest landscape. In the foreground, there is a field of tall, dry, golden-brown grass. Several large, dark tree trunks are visible, some with moss. The background shows more trees and a hazy sky. The text "THANK YOU" is written in white, and "QUESTIONS?" is written in green, both in a bold, sans-serif font, centered over the image.

THANK YOU
QUESTIONS?